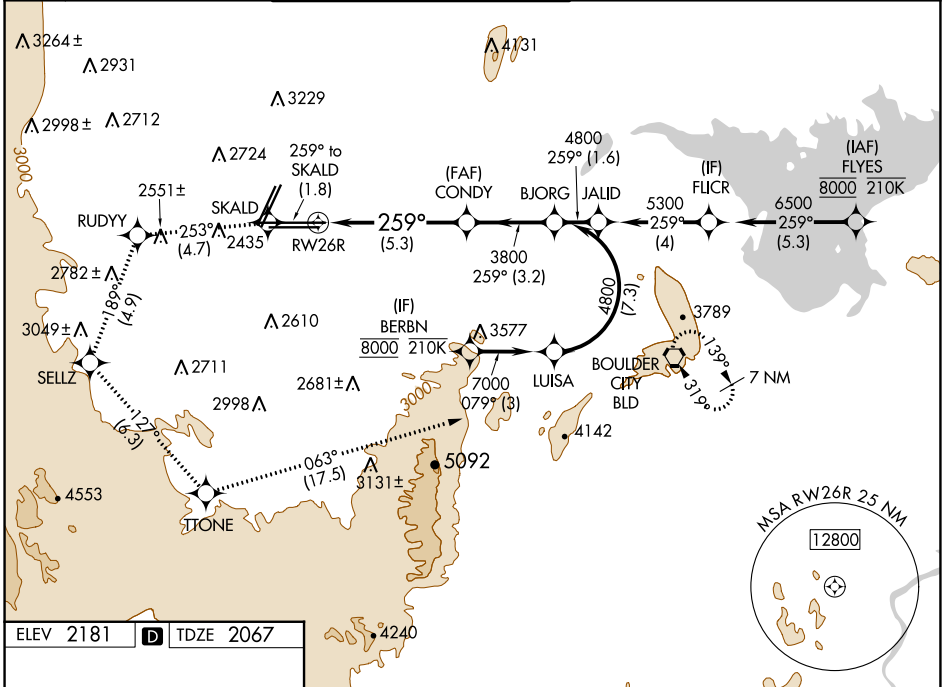


APP CRS	Rwy Idg	12638
259°	TDZE	2067
	Apt Elev	2181

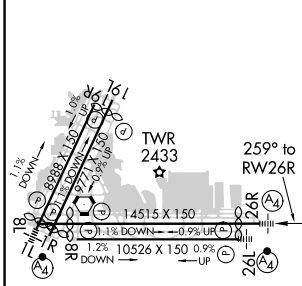
RNAV (RNP) RWY 26R

HARRY REID INTL (LAS)

RNP AR APCH-GPS.		MALS	MISSED APPROACH: Cimb to 7000 on the RNAV missed approach route to BLD VORTAC and hold. * Missed approach requires minimum climb of 230 feet per NM to 3200.			
For uncompensated Baro-VNAV systems, procedure NA below -1°C or above 54°C.						
D-ATIS	LAS VEGAS APP CON	LAS VEGAS TOWER		GND CON	CLNC DEL	CPDLC
132.4	125.025 379.15 (West) 119.775 282.2 (East)	118.75 257.8 (Rwy 1L/19R, 1R/19L) 119.9 257.8 (Rwy 8L/26R, 8R/26L)		121.1 270.8 E of 1R/19L 121.9 254.3 W of 1R/19L	118.0	



ELEV 2181	D	TDZE 2067
-----------	----------	-----------



7000	SKALD	RUDYY	SELTZ	TITONE	BLD
↑	◆	tr 253°	◆	tr 127°	tr 063°
tr 259°		tr 189°			
VGSi and RNAV glidepath not coincident (VGSi Angle 3.00/TCH 84).					
See planview for multiple IF locations.					
RWY 26R			CONDY	BJORG	
			3800	4800	
			259°		
			3800		GP 3.00°
					TCH 60
			5.3 NM	3.2 NM	
CATEGORY	A	B	C	D	
RNP 0.30 DA*	2457-7/8 390 (300-7/8)				
RNP 0.30 DA	2508-1 441 (400-1)				
AUTHORIZATION REQUIRED					

MIRL Rwy 1R-19L
REIL Rwy 1R, 8R, 19L and 19R
HIRL Rwy 1L-19R, 8L-26R and 8R-26L

SW-4, 23 FEB 2023 to 23 MAR 2023

SW-4, 23 FEB 2023 to 23 MAR 2023