

LOHLA THREE DEPARTURE (RNAV)

AL-662 (FAA)

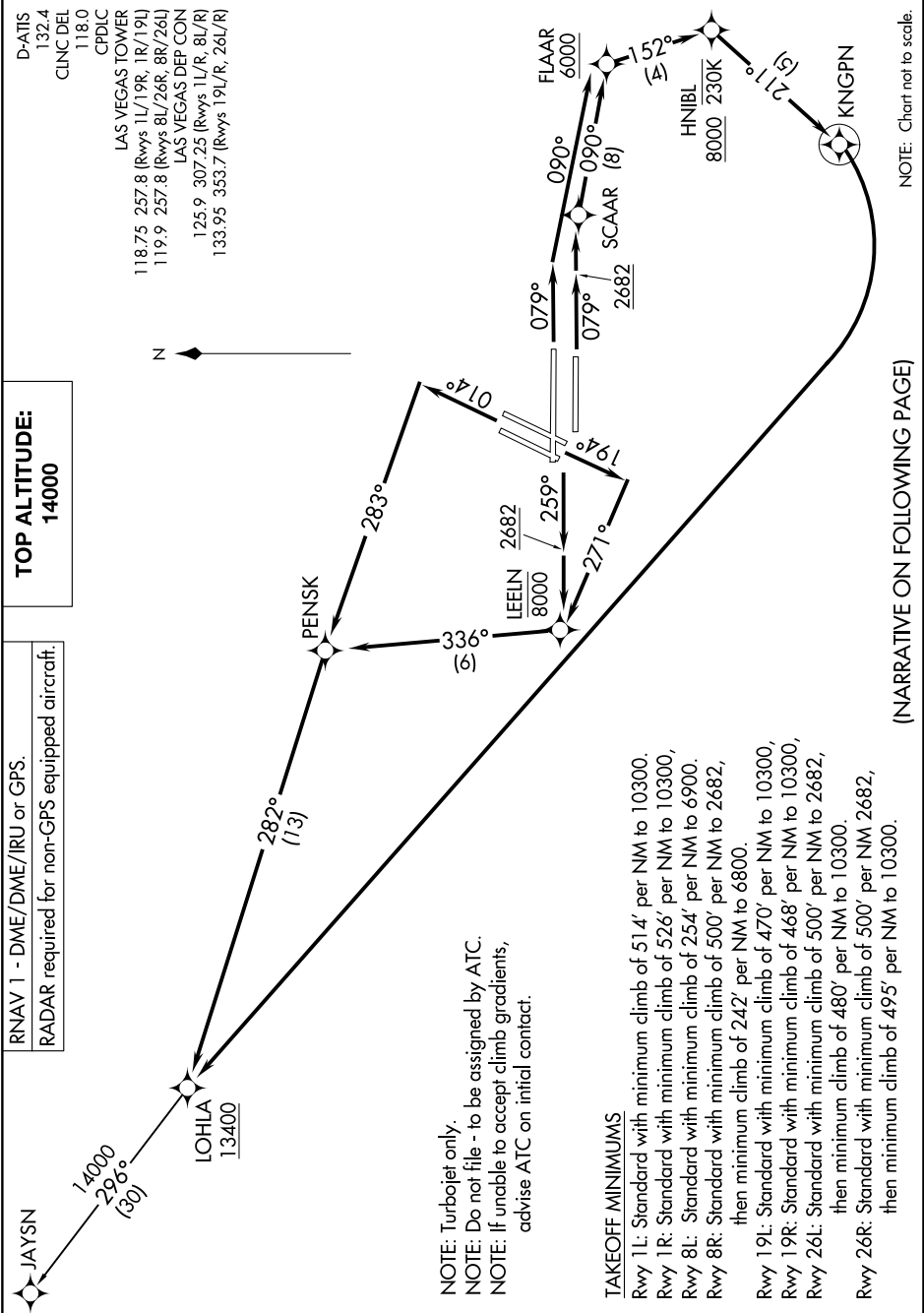
HARRY REID INTL (LAS)
LAS VEGAS, NEVADA

SW-4, 23 FEB 2023 to 23 MAR 2023

D-ATIS 132.4
CLNC DEL 118.0
CPDIC
LAS VEGAS TOWER
118.75 257.8 (Rwys 1L/19R, 1R/19L)
119.9 257.8 (Rwys 8L/26R, 8R/26L)
LAS VEGAS DEP CON
125.9 307.25 (Rwys 1L/R, 8L/R)
133.95 353.7 (Rwys 19L/R, 26L/R)

TOP ALTITUDE:
14000

RNAV 1 - DME/DME/IRU or GPS.
RADAR required for non-GPS equipped aircraft.



NOTE: Turbojet only.
NOTE: Do not file - to be assigned by ATC.
NOTE: If unable to accept climb gradients, advise ATC on initial contact.

TAKEOFF MINIMUMS

- Rwy 1L: Standard with minimum climb of 514' per NM to 10300.
- Rwy 1R: Standard with minimum climb of 526' per NM to 10300.
- Rwy 8L: Standard with minimum climb of 254' per NM to 6900.
- Rwy 8R: Standard with minimum climb of 500' per NM to 2682, then minimum climb of 242' per NM to 6800.
- Rwy 19L: Standard with minimum climb of 470' per NM to 10300.
- Rwy 19R: Standard with minimum climb of 468' per NM to 10300.
- Rwy 26L: Standard with minimum climb of 500' per NM to 2682, then minimum climb of 480' per NM to 10300.
- Rwy 26R: Standard with minimum climb of 500' per NM 2682, then minimum climb of 495' per NM to 10300.

(NARRATIVE ON FOLLOWING PAGE)

NOTE: Chart not to scale.

LOHLA THREE DEPARTURE (RNAV)

SW-4, 23 FEB 2023 to 23 MAR 2023