

# JOHKR THREE DEPARTURE (RNAV) Transition Routes

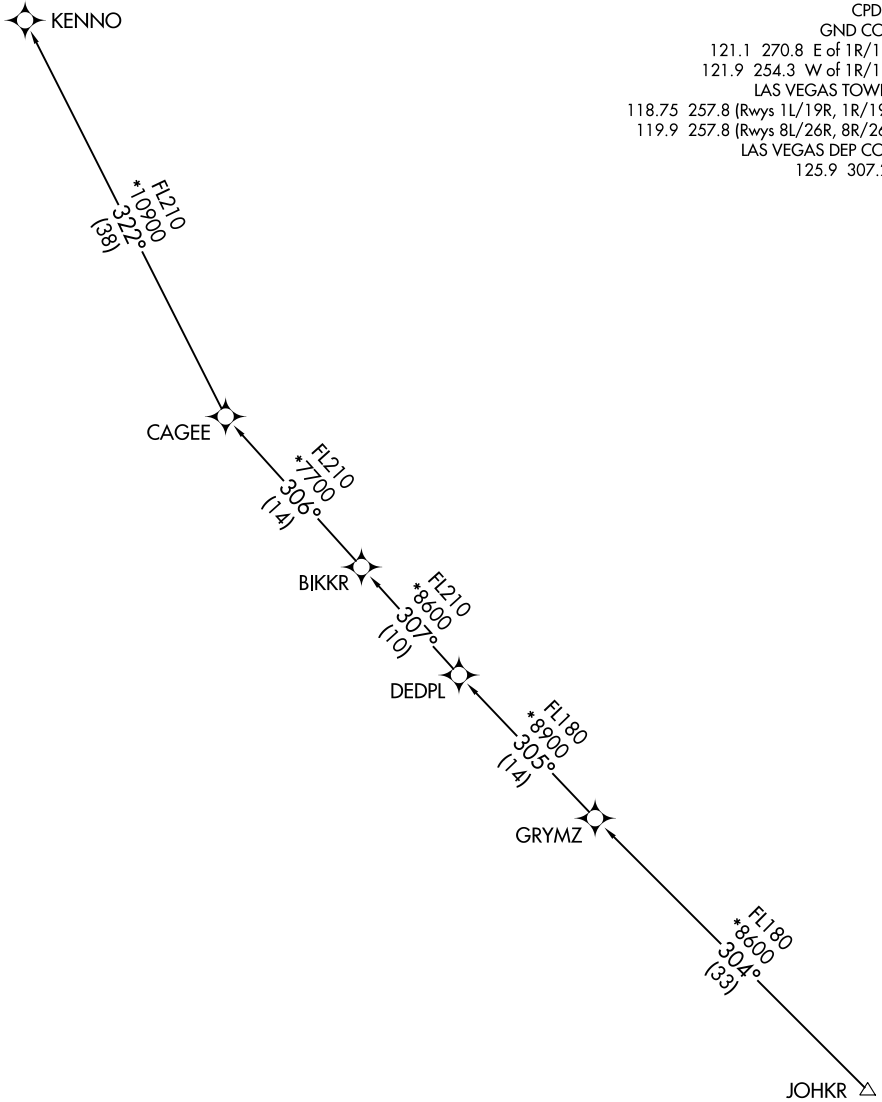
RNAV 1 - DME/DME/IRU or GPS.  
RADAR required for non-GPS equipped aircraft.

**TOP ALTITUDE:  
FL190**

D-ATIS	132.4
CLNC DEL	118.0
CPDLC	
GND CON	
121.1 270.8 E of 1R/19L	
121.9 254.3 W of 1R/19L	
LAS VEGAS TOWER	
118.75 257.8 (Rwys 1L/19R, 1R/19L)	
119.9 257.8 (Rwys 8L/26R, 8R/26L)	
LAS VEGAS DEP CON	
125.9 307.25	

SW-4, 23 FEB 2023 to 23 MAR 2023

SW-4, 23 FEB 2023 to 23 MAR 2023



(NARRATIVE ON FOLLOWING PAGE)

NOTE: Turbojet aircraft only.

NOTE: Chart not to scale.