

# GIDGT TWO DEPARTURE (RNAV) Departure Routes

SW-4, 23 FEB 2023 to 23 MAR 2023

## DEPARTURE ROUTE DESCRIPTION

**TAKEOFF RUNWAYS 1L/R:** Climb on heading 014° to intercept course 072° to KYBAD, then on track 072° to HAINDN, then on track 073° to cross AIRRO at or above 11 500 and at or below 250K, then on track 075° to GIDGT, thence. . . .

**TAKEOFF RUNWAYS 8L/R:** Climb on heading 079° to 2682, then direct AYUJH, cross AYUJH at or above 6000, then on track 079° to MILVIN, then on track 064° to cross GEEZY at or above 12000, then on track 065° to cross JETTIG at or below 14000, then on track 065° to GIDGT, thence. . . .

**TAKEOFF RUNWAYS 19L/R:** Climb on heading 194° to intercept course 271° to cross LEEIN at or below 8000, then on track 336° to cross GJIAN at or above 5000 and at or below 230K, then on track 050° to cross BACCK at or above 6000, then on track 058° to cross ALOLY at or above 7000, then on track 079° to cross TTEEA at or above 14000, then on track 079° to GIDGT, thence. . . .

**TAKEOFF RUNWAYS 26L/R:** Climb on heading 259° to 2682, then direct LEEIN to cross LEEIN at or below 8000, then on track 336° to cross GJIAN at or above 5000 and at or below 230K, then on track 050° to cross BACCK at or above 6000, then on track 058° to cross ALOLY at or above 7000, then on track 079° to cross TTEEA at or above 14000, then on track 079° to GIDGT, thence. . . .

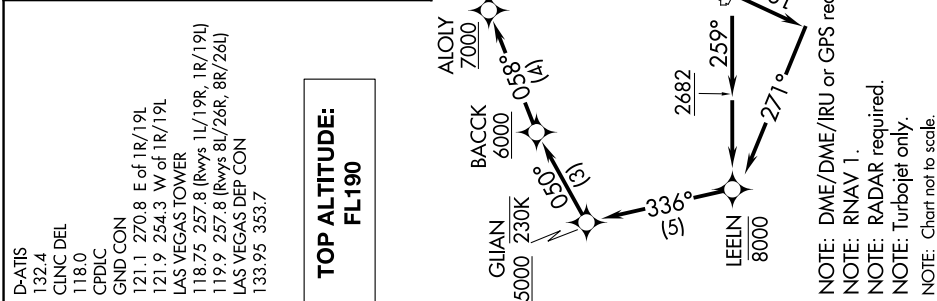
... on (transition). Maintain FL190. Expect filed altitude 10 minutes after departure.



D-ATS 132.4  
CLNC DEL 118.0  
CPDLC  
GND CON 121.1 270.8 E of 1R/19L  
121.9 254.3 W of 1R/19L  
LAS VEGAS TOWER  
118.75 257.8 (Rwys 1L/19R, 1R/19L)  
119.9 257.8 (Rwys 8L/26R, 8R/26L)  
LAS VEGAS DEP CON  
133.95 353.7

**TOP ALTITUDE:  
FL190**

# GIDGT TWO DEPARTURE (RNAV) Departure Routes



(CONTINUED ON FOLLOWING PAGE)

**TAKEOFF MINIMUMS**  
 Rwy 1L: Standard with minimum climb of 500' per NM to 2682, then 286' per NM to 4900.  
 Rwy 1R: Standard with minimum climb of 500' per NM to 2682, then 295' per NM to 4900.  
 Rwys 8L/R, 19L/R: Standard with minimum climb of 500' per NM to 2682.  
 Rwy 26L: Standard with minimum climb of 500' per NM to 2682, then 204' per NM to 4100.  
 Rwy 26R: Standard with minimum climb of 500' per NM to 2682, then 271' per NM to 4100.

NOTE: DME/DME/IRU or GPS required.  
 NOTE: RNAV 1.  
 NOTE: RADAR required.  
 NOTE: Turbojet only.  
 NOTE: Chart not to scale.

SW-4, 23 FEB 2023 to 23 MAR 2023