

CRESO FIVE ARRIVAL

AL-662 (FAA)

HARRY REID INTL (LAS)
LAS VEGAS, NEVADA

LAS VEGAS APP CON
125.475 307.25
LAS VEGAS TOWER
118.75 257.8 (Rwy 1L/19R, 1R/19L)
119.9 257.8 (Rwy 8L/26R, 8R/26L)
D-ATIS
132.4

RADAR required

LAS VEGAS
116.9 LAS : : :
Chan 116

LOCALIZER 110.3
I-LAS : : :
Chan 40

LOCALIZER 111.5
I-RLE : : :
Chan 52

Ldg Rwy
26L/R

BOULDER CITY
116.7 BLD : : :
Chan 114
N35°59.75'
W114°51.81'
7300

WHIGG
N35°30.48'
W115°31.42'

CRESO
N35°46.44'
W115°09.91'

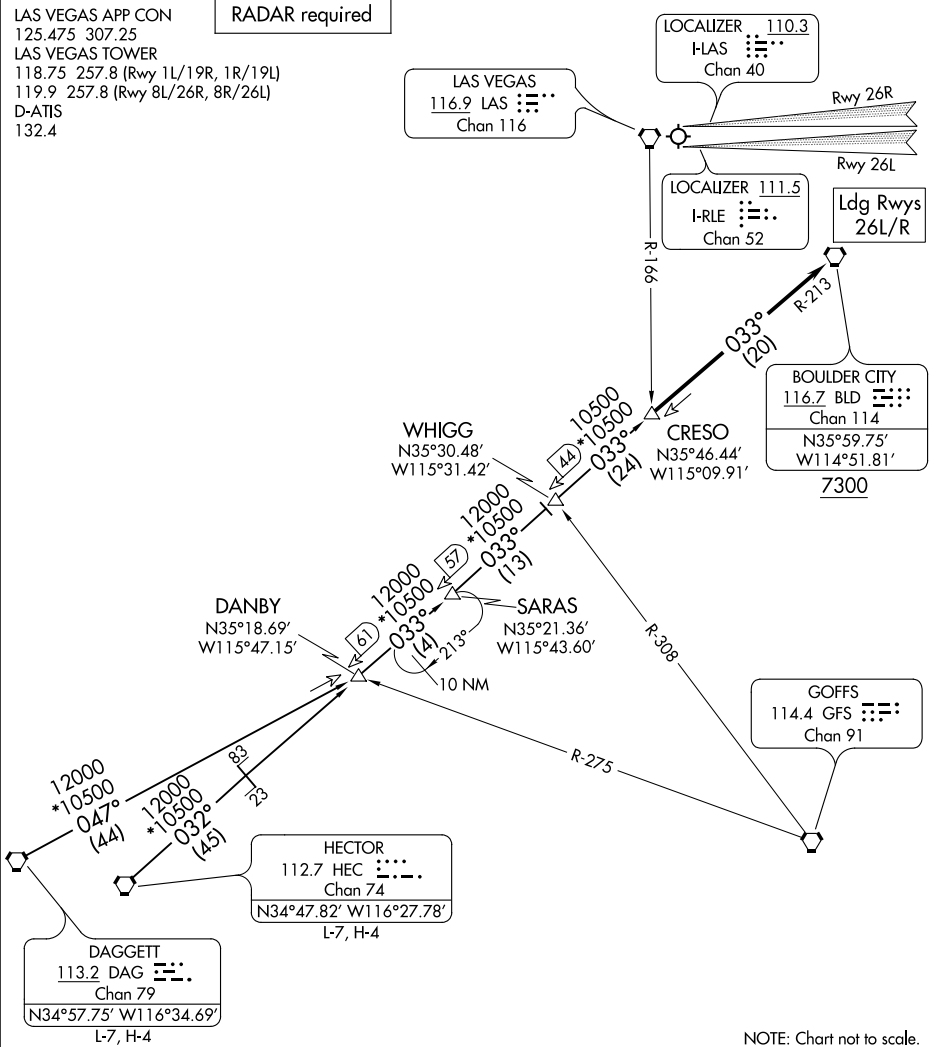
DANBY
N35°18.69'
W115°47.15'

SARAS
N35°21.36'
W115°43.60'

GOFFS
114.4 GFS : : :
Chan 91

HECTOR
112.7 HEC : : :
Chan 74
N34°47.82' W116°27.78'
L-7, H-4

DAGGETT
113.2 DAG : : :
Chan 79
N34°57.75' W116°34.69'
L-7, H-4



NOTE: Chart not to scale.

ARRIVAL ROUTE DESCRIPTION

DAGGETT TRANSITION (DAG.CRESO5): From over DAG VORTAC on DAG R-047 and BLD R-213 to CRESO, thence. . . .

HECTOR TRANSITION (HEC.CRESO5): From over HEC VORTAC on HEC R-032 and BLD R-213 to CRESO, thence. . . .

. . . .From over CRESO on BLD R-213 to cross BLD VORTAC at or above 7300. Runways 1, 8, and 19 expect RADAR vectors to final approach course. From BLD VORTAC expect ILS approach Runway 26L/R.

CRESO FIVE ARRIVAL

(CRESO.CRESO5) 27JAN22

LAS VEGAS, NEVADA
HARRY REID INTL (LAS)

SW-4, 23 FEB 2023 to 23 MAR 2023

SW-4, 23 FEB 2023 to 23 MAR 2023