

COKTL TWO ARRIVAL (RNAV) Transition Routes

RNAV 1 - DME/DME/IRU or GPS.

RADAR required.

LAS VEGAS APP CON

125.025 379.15

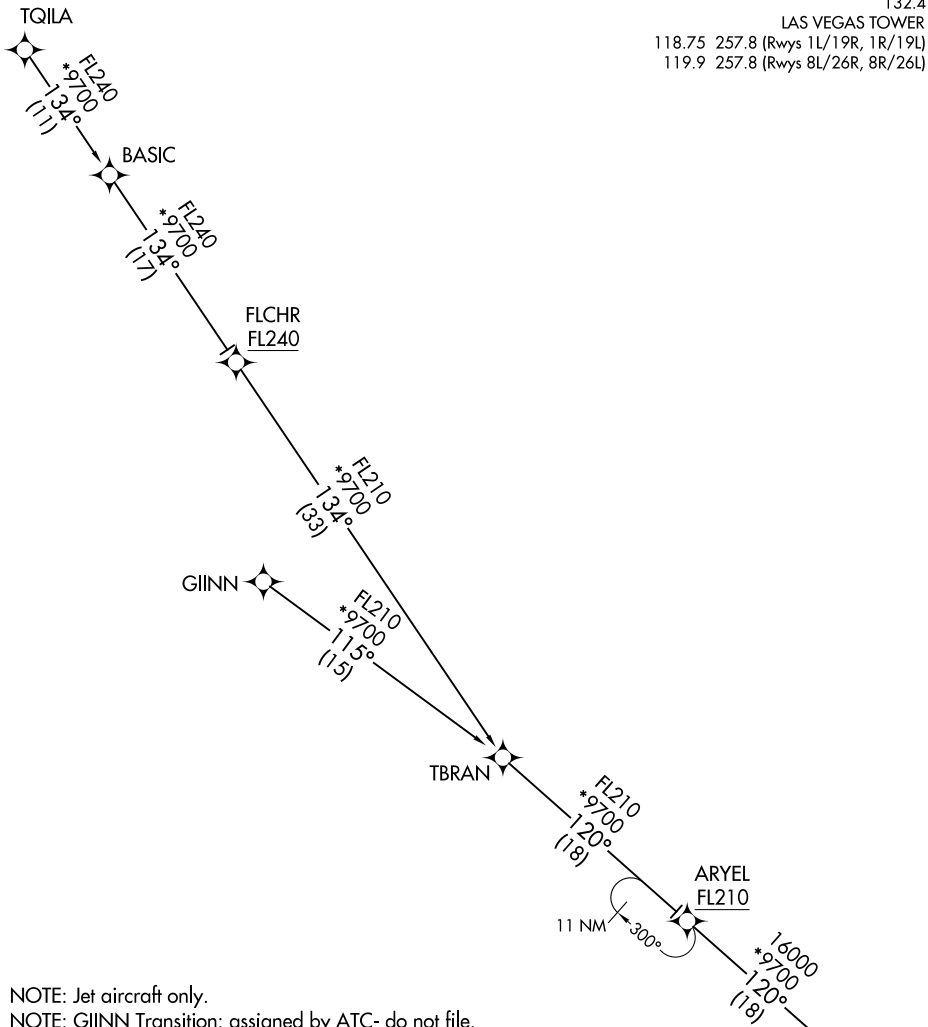
D-ATIS

132.4

LAS VEGAS TOWER

118.75 257.8 (Rwys 1L/19R, 1R/19L)

119.9 257.8 (Rwys 8L/26R, 8R/26L)



NOTE: Jet aircraft only.

NOTE: GIINN Transition: assigned by ATC- do not file.

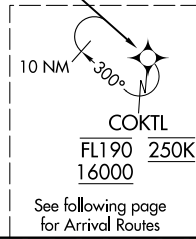
(CONTINUED ON FOLLOWING PAGE)

FLCHR TRANSITION (FLCHR.COKTL2)

GIINN TRANSITION (GIINN.COKTL2)

TQILA TRANSITION (TQILA.COKTL2)

NOTE: Chart not to scale.



See following page for Arrival Routes

COKTL TWO ARRIVAL (RNAV) Transition Routes