

WAAS CH 58240 W21A	APP CRS 213°	Rwy Idg TDZE 1194 Apt Elev 1194	5002 1194 1194
--	------------------------	---	---

RNAV (GPS) RWY 21

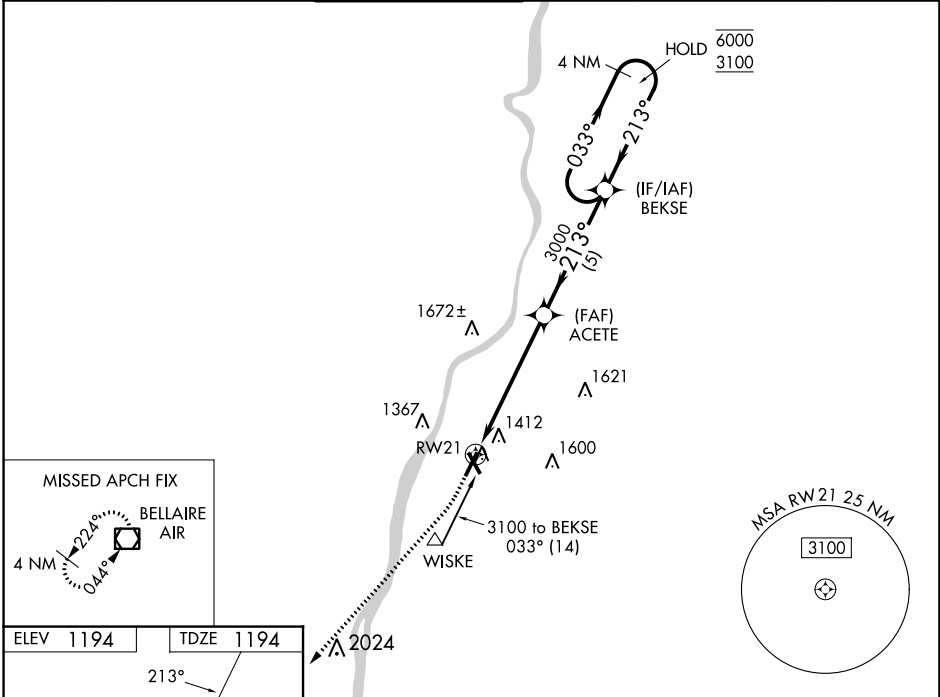
WHEELING OHIO COUNTY (H.L.G.)

RNP APCH.

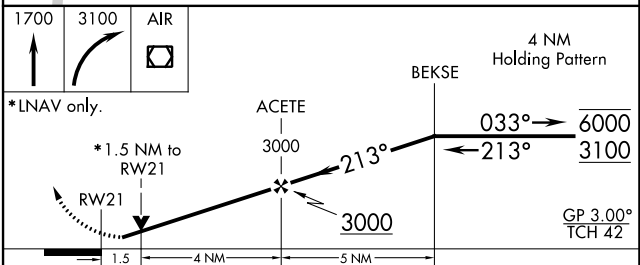
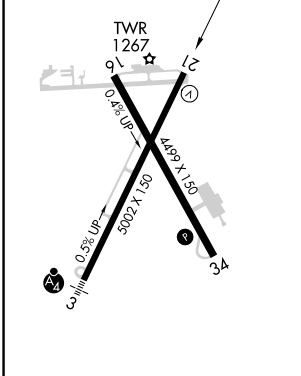
▼ Rwy 21 helicopter visibility reduction below 3/4 SM NA. For uncompensated Baro-VNAV systems, procedure NA below -17°C or above 54°C.

MISSED APPROACH: Climb to 1700 then climbing right turn to 3100 direct AIR VOR/DME and hold.

ASOS 127.375	PITTSBURGH APP CON 125.275 285.575	WHEELING TOWER * 118.1 (CTAF) 0257.8	GND CON 121.75	CLNC DEL 125.275 (when twr closed)	UNICOM 122.95
------------------------	--	--	--------------------------	---	-------------------------



ELEV 1194	TDZE 1194
------------------	------------------



CATEGORY	A	B	C	D
LPV DA		1444/50	250 (300-1)	
LNAV/VNAV DA		1653-1 3/8	459 (500-1 3/8)	
LNAV MDA	1700/55	506 (600-1)	1700-1 3/8	506 (600-1 3/8)
C CIRCLING	1720-1 526 (600-1)	1740-1 546 (600-1)	1920-2 726 (800-2)	1920-2 1/4 726 (800-2 1/4)

HIRL Rwy 3-21 **①**
MIRL Rwy 16-34 **①**
REIL Rwy 21 and 34 **①**

NE-4, 23 FEB 2023 to 23 MAR 2023

NE-4, 23 FEB 2023 to 23 MAR 2023