

LOC I-HLG <b>109.7</b>	APP CRS <b>033°</b>	Rwy Idg <b>5002</b>
		TDZE <b>1172</b>
		Apt Elev <b>1194</b>

# ILS or LOC RWY 3

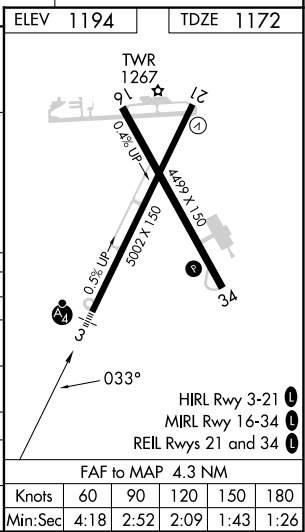
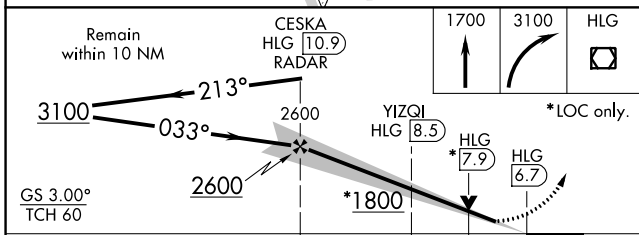
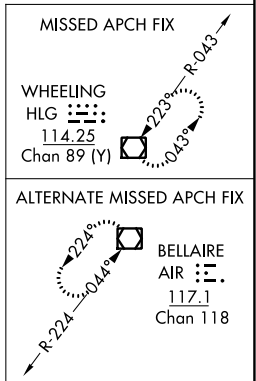
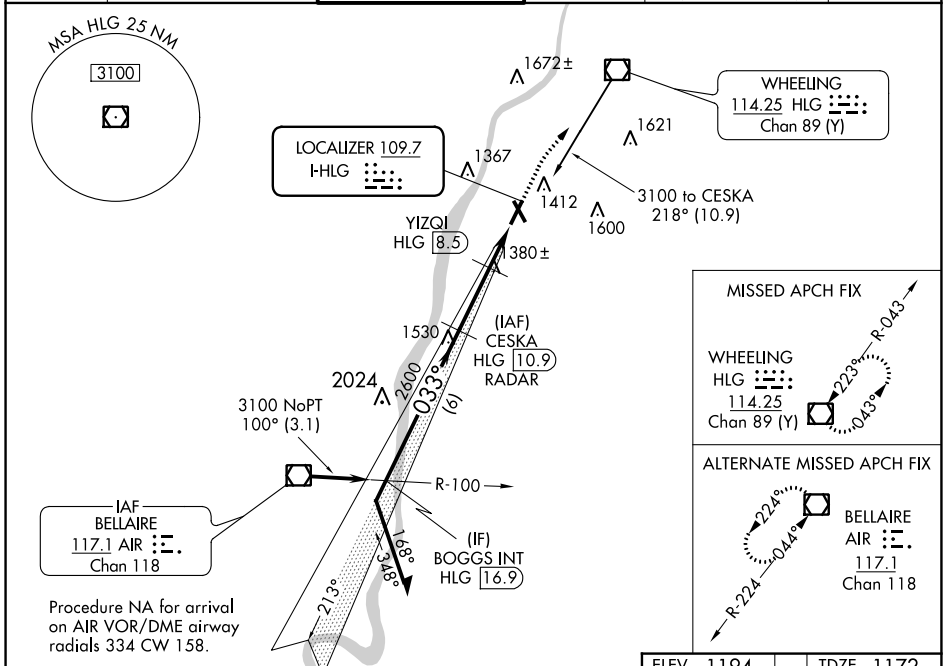
WHEELING OHIO COUNTY (HLG)

DME or RADAR required.

**⚠** Autopilot coupled approach NA below 1401. Inop table does not apply to S-ILS all Cats and S-LOC Cats A/B.

**MALSF** MISSED APPROACH: Climb to 1700 then climbing right turn to 3100 direct HLG VOR/DME and hold. Continue climb-in-hold to 3100.

ASOS <b>127.375</b>	PITTSBURGH APP CON <b>125.275 285.575</b>	WHEELING TOWER * <b>118.1(CTAF) 0257.8</b>	GND CON <b>121.75</b>	CNLC DEL <b>125.275</b> (when twr closed)	UNICOM <b>122.95</b>
------------------------	--	---	--------------------------	---	-------------------------



CATEGORY	A	B	C	D
S-ILS 3		1372/50	200 (200-1)	
S-LOC 3	1800/50	628 (700-1)	1800-1½	628 (700-1½)
<b>C</b> CIRCLING	1800-1	606 (700-1)	1920-2 726 (800-2)	1920-2¼ 726 (800-2¼)
YIZQI FIX MINIMUMS				
S-LOC 3	1640/50	468 (500-1)	1640/60	468 (500-1¼)
<b>C</b> CIRCLING	1720-1 526 (600-1)	1740-1 546 (600-1)	1920-2 726 (800-2)	1920-2¼ 726 (800-2¼)

NE-4, 23 FEB 2023 to 23 MAR 2023

NE-4, 23 FEB 2023 to 23 MAR 2023

Knots	60	90	120	150	180
Min:Sec	4:18	2:52	2:09	1:43	1:26