

(GRAYM.GRAYM6) 21112  
**GRAYM SIX ARRIVAL**

AL-626 (FAA)

BEDFORD, MASSACHUSETTS

BOSTON APP CON  
 124.4 279.6  
 BRADLEY APP CON  
 119.0 327.1  
 BED ATIS  
 124.6  
 BVY ATIS  
 119.2  
 LWM ATIS  
 126.75

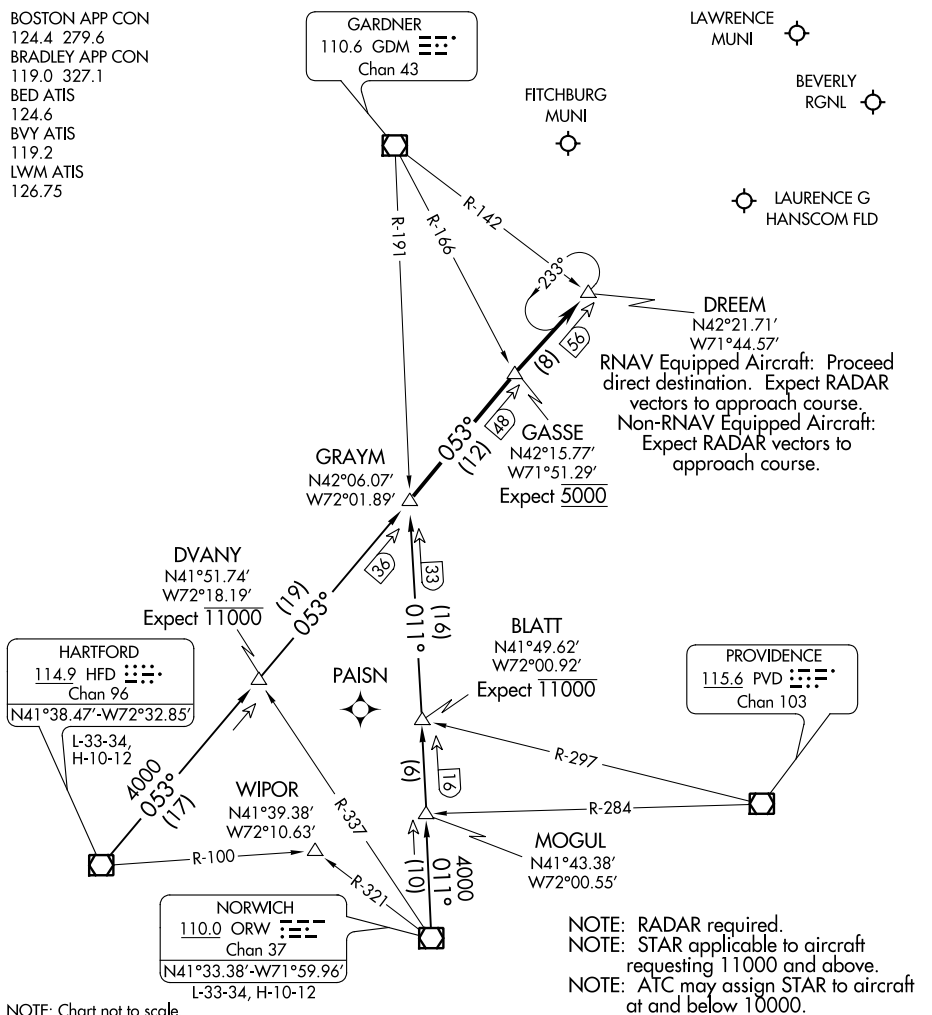
GARDNER  
 110.6 GDM  
 Chan 43

LAWRENCE MUNI

BEVERLY RGNL

FITCHBURG MUNI

LAURENCE G HANSCOM FLD



NE-1, 23 FEB 2023 to 23 MAR 2023

NE-1, 23 FEB 2023 to 23 MAR 2023

NOTE: Chart not to scale.

NOTE: RADAR required.  
 NOTE: STAR applicable to aircraft requesting 11000 and above.  
 NOTE: ATC may assign STAR to aircraft at and below 10000.

**ARRIVAL ROUTE DESCRIPTION**

HARTFORD TRANSITION (HFD.GRAYM6): From over HFD VOR/DME on HFD R-053 to GRAYM. Thence. . .

NORWICH TRANSITION (ORW.GRAYM6): From over ORW VOR/DME on ORW R-011 to GRAYM. Thence. . .

. . . From over GRAYM on HFD R-053 to GASSE, then to DREAM, at DREAM:  
RNAV EQUIPPED AIRCRAFT: Proceed direct destination expect radar vectors to approach course.  
NON-RNAV EQUIPPED AIRCRAFT: Expect radar vectors to approach course.

**GRAYM SIX ARRIVAL**  
 (GRAYM.GRAYM6) 08NOV18

BEDFORD, MASSACHUSETTS