

# SKYKO ONE ARRIVAL

NW-1, 23 FEB 2023 to 23 MAR 2023

SEATTLE APP CON  
123.9 338.2  
BFI ATIS  
127.75  
RIN ATIS  
126.95  
SEA D-ATIS  
118.0

## ARRIVAL ROUTE DESCRIPTION

**EPHRATA TRANSITION (EPH.SKYKO1):** From over EPH VORTAC on EPH R-266 and PAE R-085 to SKYKO. Thence . . . . .

**ODESS TRANSITION (ODESS.SKYKO1):** From over ODESS on EPH R-082 to EPH VORTAC, then on EPH R-266 and PAE R-085 to SKYKO. Thence . . . . .

. . . . . from SKYKO on PAINE VOR/DME (PAE) R-085 to cross HUVUS between 10000 and 13000, then on SEATTLE VORTAC (SEA) SEA R-023 to cross HETHR between 10000 and 13000, thence . . . . .

**LANDING NORTH:** Fly heading 163°. Expect RADAR vectors to final approach course.  
**LANDING SOUTH:** Fly heading 250°. Expect RADAR vectors to final approach course.

**LOST COMMUNICATIONS:** Maintain last assigned altitude. From over HETHR, proceed direct SEA VORTAC and hold.



PAINE  
N47°49.86'  
W121°46.74'  
110.6 PAE :--:  
Chan 43

HUVUS  
N47°49.86'  
W121°46.74'  
13000  
10000

HETHR  
N47°33.54'  
W122°08.70'  
13000  
10000

SKYKO  
N47°46.03'  
W121°25.73'  
16000  
13000

EPHRATA  
N47°22.68'  
W119°25.44'  
112.6 EPH :--:  
Chan 73  
FL180

MOSES LAKE  
N47°08.21'  
W117°58.45'  
115.0 MWL :--:  
Chan 97  
FL180  
H-1

SEATTLE  
N47°26.12'-W122°18.58'  
116.8 SEA :--:  
Chan 115

SPOKANE  
N47°08.21'  
W117°58.45'  
115.5 GEG :--:  
Chan 102  
FL180

ODESS  
N47°08.21'  
W117°58.45'  
115.0 MWL :--:  
Chan 97  
FL180  
H-1

SEATTLE  
N47°26.12'-W122°18.58'  
116.8 SEA :--:  
Chan 115

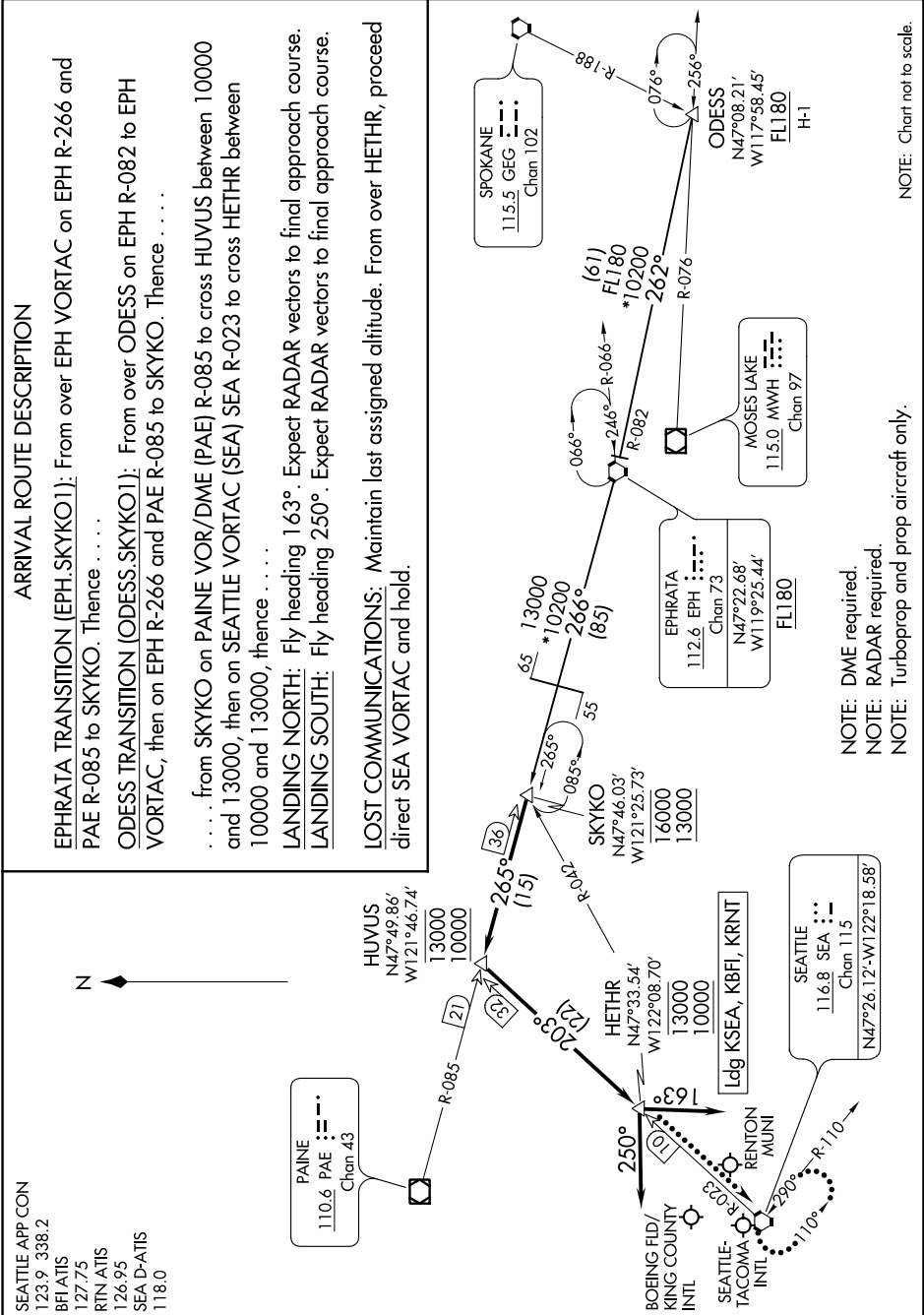
SEATTLE  
N47°26.12'-W122°18.58'  
116.8 SEA :--:  
Chan 115

SEATTLE  
N47°26.12'-W122°18.58'  
116.8 SEA :--:  
Chan 115

SEATTLE  
N47°26.12'-W122°18.58'  
116.8 SEA :--:  
Chan 115

# SKYKO ONE ARRIVAL

NW-1, 23 FEB 2023 to 23 MAR 2023



NOTE: Chart not to scale.