

WAAS CH 90229 W36A	APP CRS 355°	Rwy Idg 12250 TDZE 496 Apt Elev 542
--	------------------------	--

RNAV (GPS) Y RWY 36L

AUSTIN-BERGSTROM INTL (AUS)

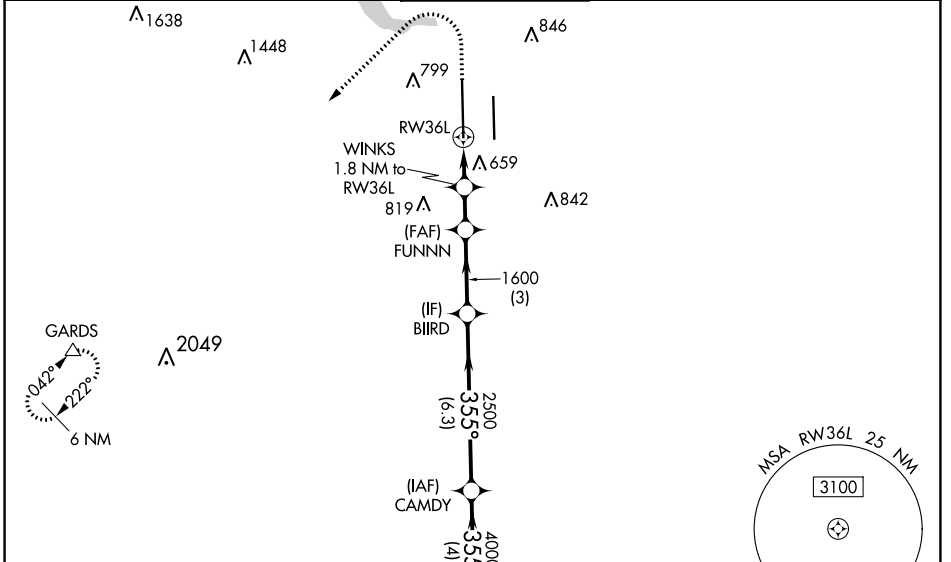
RNP APCH-GPS.

Simultaneous approach authorized. LNAV procedure NA during simultaneous operations. Use of FD or AP required during simultaneous operations. For uncompensated Baro-VNAV systems, LNAV/VNAV NA below -5°C or above 54°C. For inop ALS, increase LNAV/ VNAV Cat E visibility to 1 3/8 SM, LNAV Cat E visibility to 1 1/4 SM. Inop table does not apply to LPV all Cats.

MALS
④ =

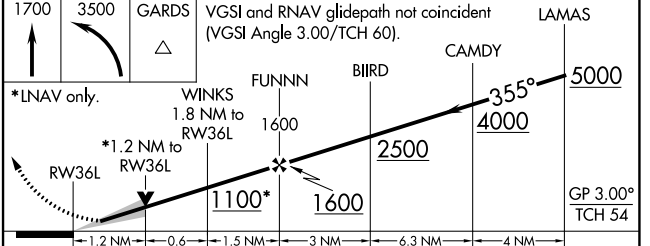
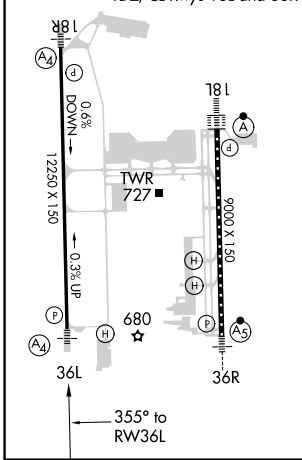
MISSED APPROACH: Climb to 1700 then climbing left turn to 3500 direct GARDS and hold.

D-ATIS 124.4	AUSTIN APP CON 127.225 317.65 (EAST) 120.875 270.25 (SOUTH) 119.0 370.85 (WEST)	AUSTIN TOWER 121.0 281.5	GND CON 121.9 348.6	CLNC DEL 125.5 263.0	CPDLC
------------------------	---	------------------------------------	-------------------------------	--------------------------------	-------



ELEV 542	D TDZE 496
-----------------	--------------------------

HIRL Rwy 18L-36R and 18R-36L
TDZ/CL Rwy 18L and 36R



CATEGORY	A	B	C	D	E
LPV DA		696/40	200 (200-3/4)		
LNAV/VNAV DA		970/60	474 (500-1 1/4)		
LNAV MDA	920/40	424 (400-3/4)	920/50	424 (400-1)	
C CIRCLING	1040-1 498 (500-1)	1120-1 578 (600-1)	1200-1 3/4 658 (700-1 1/4)	1200-2 658 (700-2)	1520-3 978 (1000-3)

SC-3, 23 FEB 2023 to 23 MAR 2023

SC-3, 23 FEB 2023 to 23 MAR 2023