

RNAV (RNP) Z RWY 18L

AUSTIN-BERGSTROM INTL (AUS)

APP CRS	Rwy Idg	9000
175°	TDZE	492
	Apt Elev	542

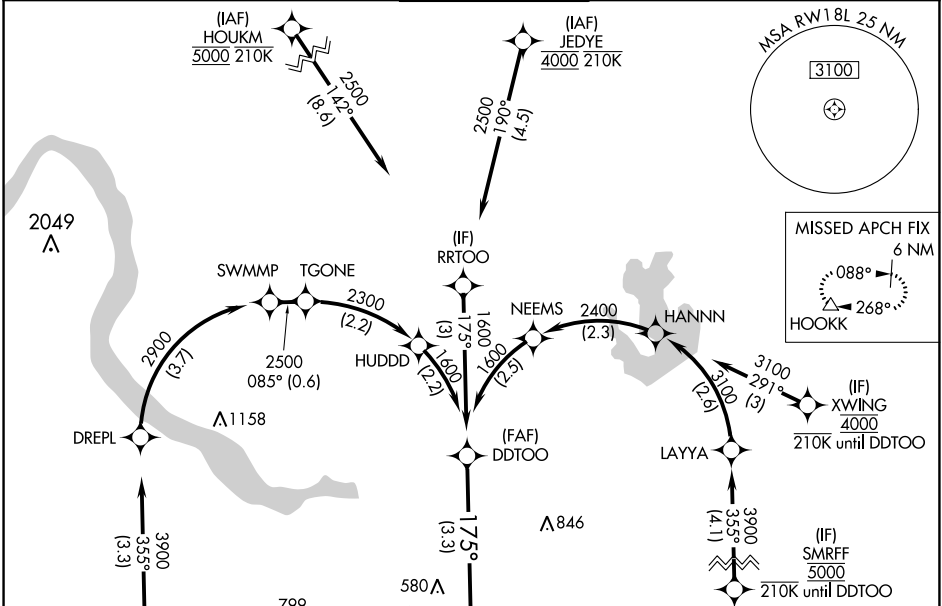
RADAR required. RNP AR APCH-GPS.

Simultaneous approach authorized. For uncompensated Baro-VNAV systems, procedure NA below -5°C or above 54°C.

ALSF-2

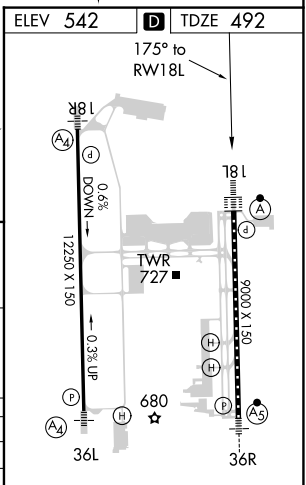
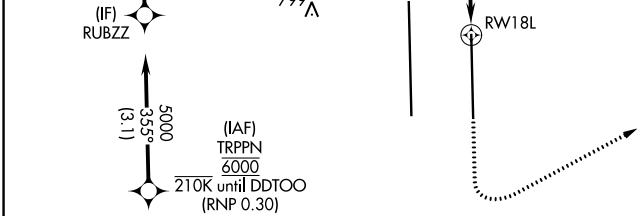
MISSED APPROACH: Climb to 1000 then climbing left turn to 3000 direct HOOKK and hold.

D-ATIS	AUSTIN APP CON	AUSTIN TOWER	GND CON	CLNC DEL	CPDLC
124.4	127.225 317.65 (EAST) 120.875 270.25 (SOUTH) 119.0 370.85 (WEST)	121.0 281.5	121.9 348.6	125.5 263.0	



SC-3, 23 FEB 2023 to 23 MAR 2023

SC-3, 23 FEB 2023 to 23 MAR 2023



DDTOO	VGSi and RNAV glidepath not coincident (VGSi Angle 3.00/TCH 74).			
1600	1600	1000	3000	HOOKK
GP 3.00° TCH 61				
See planview for multiple IF locations.				
CATEGORY	A	B	C	D
RNP 0.24 DA		825/26	333 (300-1/2)	
RNP 0.30 DA		885/35	393 (400-3/8)	

AUTHORIZATION REQUIRED