

(ILEXY3.ILEXY) 21112

# ILEXY THREE DEPARTURE (RNAV) AL-556 (FAA)

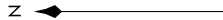
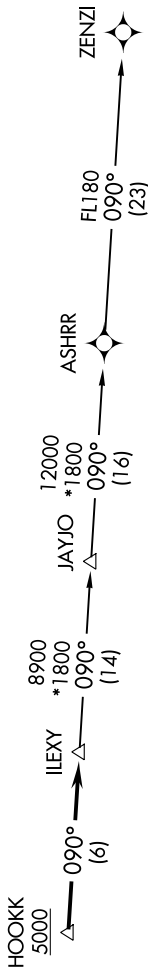
AUSTIN-BERGSTROM INTL (AUS)  
AUSTIN, TEXAS

SC-3, 23 FEB 2023 to 23 MAR 2023

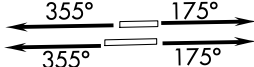
D-AITS  
124.4  
CINC DEL  
125.5 263.0  
CPDLC  
GND CON  
121.9 348.6  
AUSTIN TOWER  
121.0 281.5  
AUSTIN DEP CON  
127.225 317.65

## TOP ALTITUDE: ASSIGNED BY ATC

- NOTE: RADAR required.
- NOTE: DME/DME/IRU or GPS required.
- NOTE: RNAV 1.
- NOTE: Houston terminal area arrivals expect routing from ILEXY.
- NOTE: JAYJO transition to join V306 only.



**TAKEOFF MINIMUMS**  
 Rwys 18L/R: Standard.  
 Rwys 36L/R: Standard with minimum climb of 240' per NM to 2600.



NOTE: Chart not to scale.

## DEPARTURE ROUTE DESCRIPTION

**TAKEOFF RUNWAYS 18L/R:** Climb on heading 175° or as assigned by ATC for vectors to cross HOOKK at or above 5000, then...

**TAKEOFF RUNWAYS 36L/R:** Climb on heading 355° or as assigned by ATC for vectors to cross HOOKK at or above 5000, then...

... on track 090° to ILEXY, then on transition. Maintain altitude assigned by ATC. Expect filed altitude 10 minutes after departure.

JAYJO TRANSITION (ILEXY3.JAYJO)  
ZENZI TRANSITION (ILEXY3.ZENZI)

ILEXY THREE DEPARTURE (RNAV)  
 (ILEXY3.ILEXY) 22APR21

AUSTIN, TEXAS  
 AUSTIN-BERGSTROM INTL (AUS)

SC-3, 23 FEB 2023 to 23 MAR 2023