

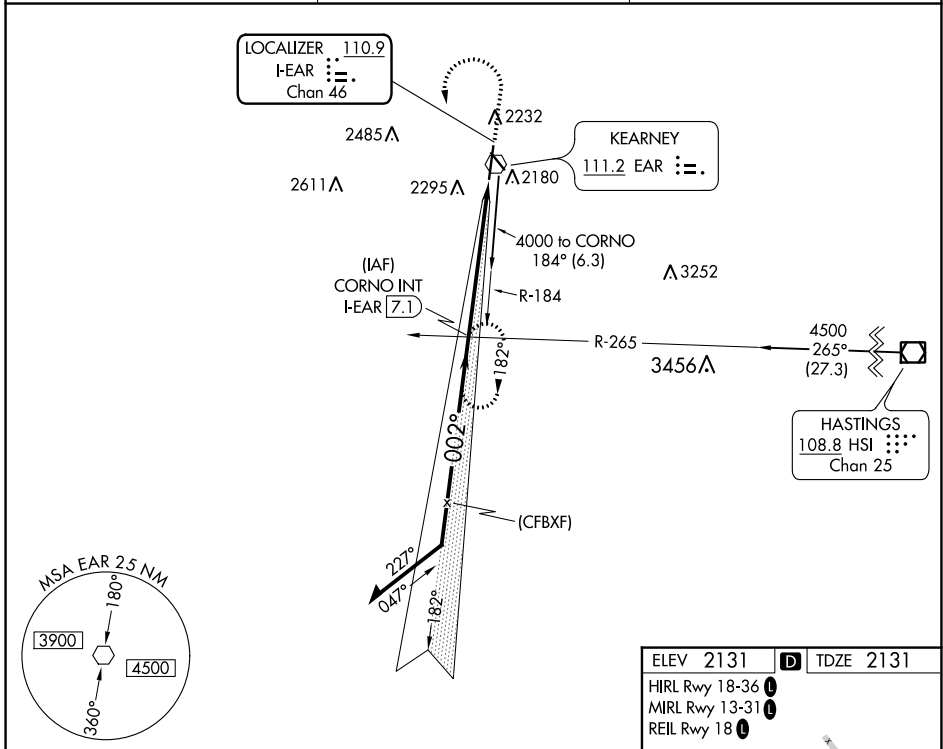
LOC/DME I- EAR 110.9 Chan 46	APP CRS 002°	Rwy Idg 7094 TDZE 2131 Apt Elev 2131
---	------------------------	---

ILS or LOC RWY 36

KEARNEY RGNL (EAR)

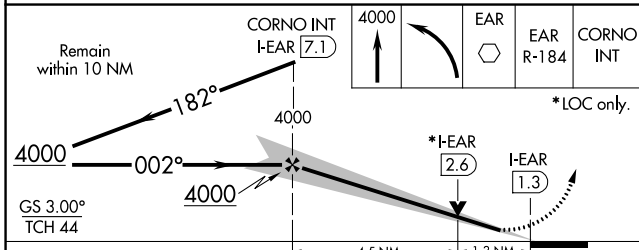
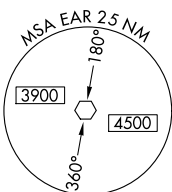
	MALSR 	MISSED APPROACH: Climb to 4000 then left turn direct EAR VOR then on EAR R-184 to CORNO INT/ I-EAR 7.1 DME and hold.
--	-----------	--

AWOS-3PT 123.875	MINNEAPOLIS CENTER 119.4 278.8	UNICOM 123.0 (CTAF) ①
----------------------------	--	---------------------------------

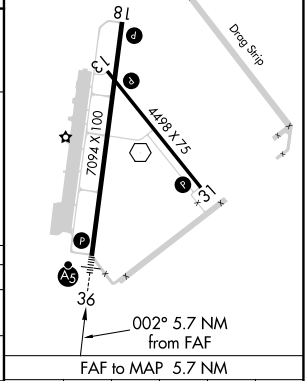


NC-2, 23 FEB 2023 to 23 MAR 2023

NC-2, 23 FEB 2023 to 23 MAR 2023



ELEV 2131	D	TDZE 2131
HIRL Rwy 18-36	①	
MIRL Rwy 13-31	①	
REIL Rwy 18	①	



CATEGORY	A	B	C	D
S-ILS 36	2331-½ 200 (200-½)			
S-LOC 36	2580-½	449 (500-½)	2580-¾	449 (500-¾)
C CIRCLING	2600-1	469 (500-1)	2640-1½	2840-2¼
			509 (600-1½)	709 (800-2¼)

FAF to MAP 5.7 NM	Knots	60	90	120	150	180
	Min:Sec	5:42	3:48	2:51	2:17	1:54