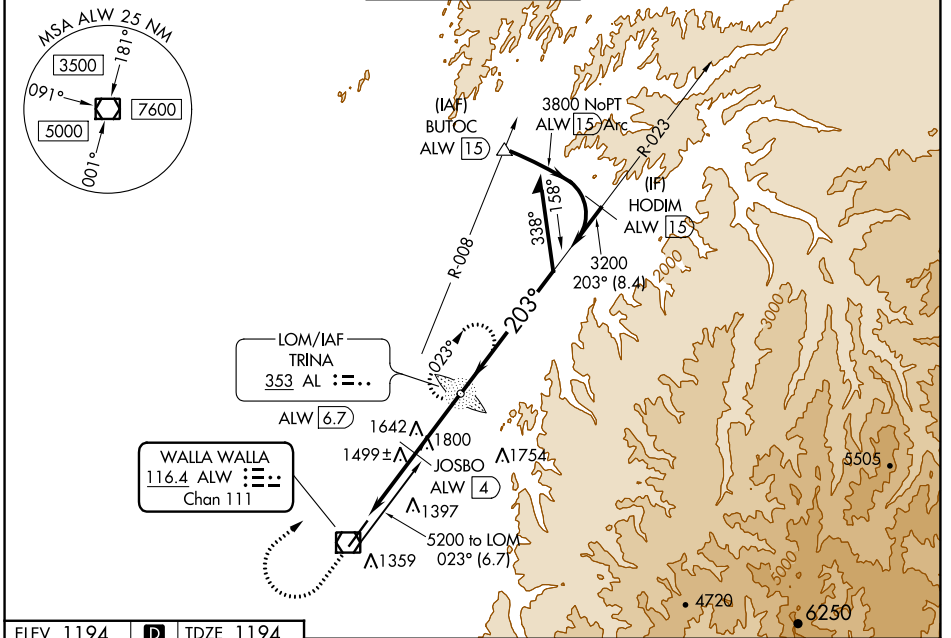


VOR/DME ALW 116.4 Chan 111	APP CRS 203°	Rwy Idg 6527 TDZE 1194 Apt Elev 1194
--	------------------------	---

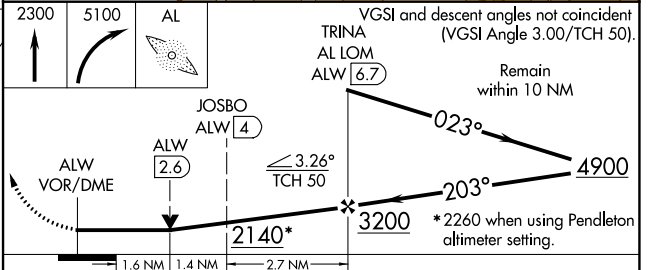
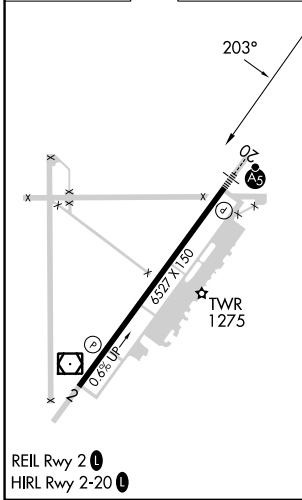
VOR RWY 20

WALLA WALLA RGNL (ALW)

ADF required.		MALSR	MISSED APPROACH: Climb to 2300 then climbing right turn to 5100 direct TRINA LOM/ALW 6.7 DME and hold, continue climb-in-hold to 5100.	
▼ ▲NA	For inop ALS, increase JOSBO fix minimums S-20 Cats C/D visibility to 1½ SM.			
ASOS 135.875	SPOKANE APP CON 133.15 379.15	WALLA WALLA TOWER ★ 118.5 (CTAF) 289.4	GND CON 121.6 289.4	UNICOM 122.95



ELEV 1194	D	TDZE 1194
-----------	----------	-----------



CATEGORY	A	B	C	D
S-20	2140/40	946 (1000-¾)	2140-2	946 (1000-2)
C CIRCLING	2140-1¼	946 (1000-1¼)	2140-2¾ 946 (1000-2¾)	2300-3 1106 (1200-3)
JOSBO FIX MINIMUMS (DME REQUIRED)				
S-20	1760/24	566 (600-½)	1760-1¼	566 (600-1¼)
C CIRCLING	1760-1 566 (600-1)	1820-1 626 (700-1)	2120-2¾ 926 (1000-2¾)	2300-3 1106 (1200-3)

NW-1, 23 FEB 2023 to 23 MAR 2023

NW-1, 23 FEB 2023 to 23 MAR 2023