

WAAS CH <b>90299</b> <b>W20A</b>	APP CRS <b>202°</b>	Rwy ldg TDZE <b>1194</b> Apt Elev <b>1194</b>
--	------------------------	---

# RNAV (GPS) RWY 20

WALLA WALLA RGNL (ALW)

RNP APCH - GPS.

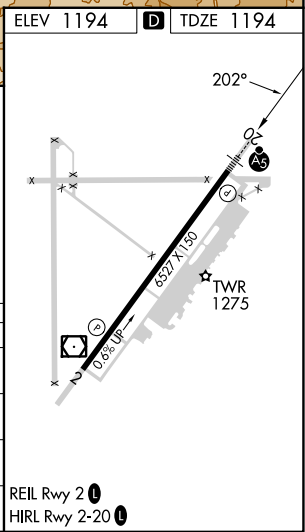
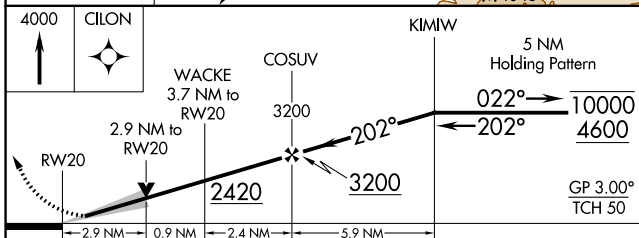
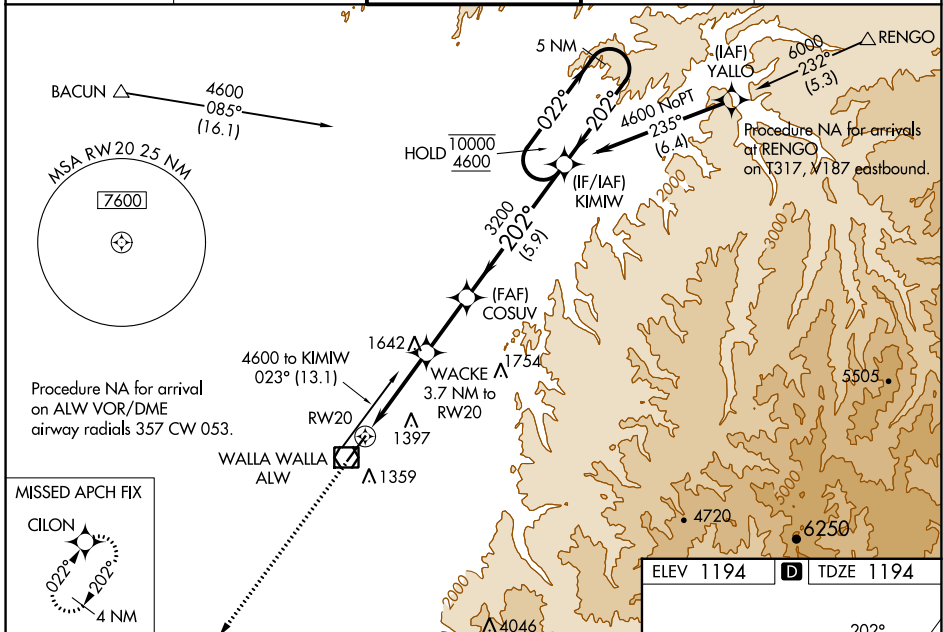
**▽**  
**△**

For uncompensated Baro-VNAV systems, LNAV/VNAV NA below -11°C or above 54°C. For inop ALS, increase LNAV/VNAV visibility to 1% SM. \*RVR 1800 authorized with use of FD or AP or HUD to DA.

MALSRL

**MISSED APPROACH:**  
Climb to 4000 direct CILON and hold.

ASOS <b>135.875</b>	SPOKANE APP CON <b>133.15 379.15</b>	WALLA WALLA TOWER ★ <b>118.5 (CTAF) 289.4</b>	GND CON <b>121.6 289.4</b>	UNICOM <b>122.95</b>
------------------------	---	--	-------------------------------	-------------------------



NW-1, 23 FEB 2023 to 23 MAR 2023

NW-1, 23 FEB 2023 to 23 MAR 2023