

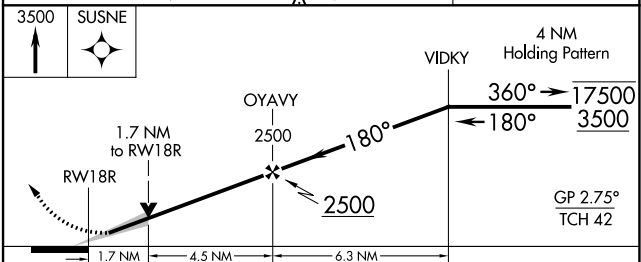
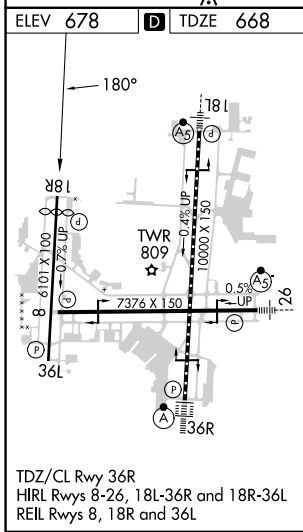
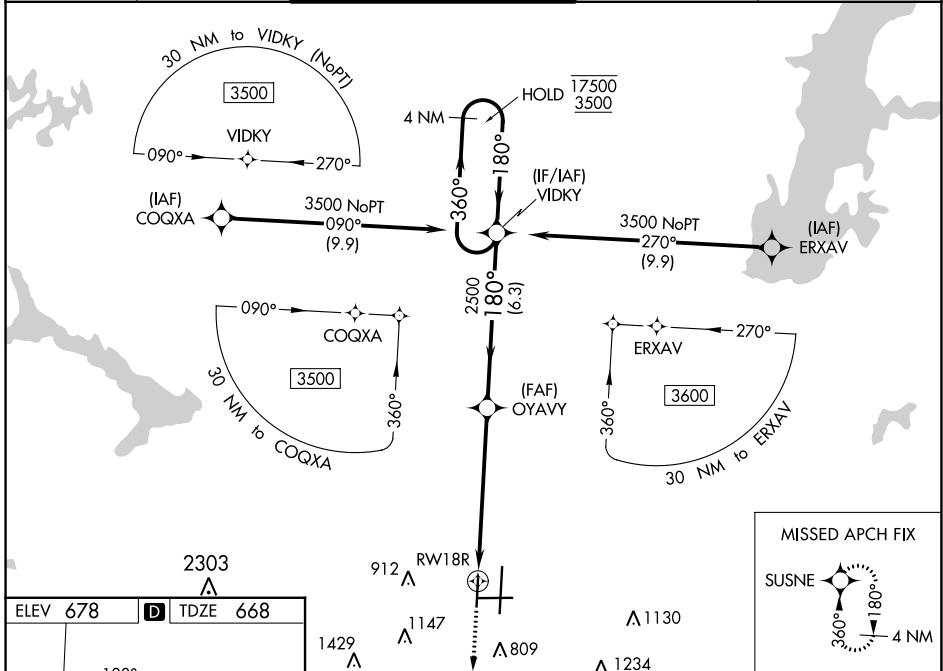
WAAS CH 69614 W18B	APP CRS 180°	Rwy Idg 5101 TDZE 668 Apt Elev 678
--	------------------------	---

RNAV (GPS) RWY 18R

TULSA INTL (TUL)

RNP APCH - GPS.		<p>▽ Circling NA for Cat E south of Rwy 8-26. Use of FD or AP required during simultaneous operations. For uncompensated Baro-VNAV systems, LNAV/VNAV NA below -11°C or above 54°C. ▲ Simultaneous approach authorized. LNAV procedure NA during simultaneous operations.</p>			<p>MISSED APPROACH: Climb to 3500 direct SUSNE and hold.</p>	
-----------------	--	---	--	--	---	--

D-ATIS 124.9 377.2	TULSA APP CON 124.0 338.3	TULSA TOWER 121.2 310.8 (Rwys 18L-36R, 8-26) 118.7 257.8 (Rwy 18R-36L)	GND CON 121.9 348.6	CLNC DEL 134.05 284.7
------------------------------	-------------------------------------	--	-------------------------------	---------------------------------



CATEGORY	A	B	C	D	E
LPV DA	868-3/4		200 (200-3/4)		
LNAV/VNAV DA	954-7/8		286 (300-7/8)		
LNAV MDA	1180-1	512 (600-1)	1180-1 3/8	512 (600-1 3/8)	
☑ CIRCLING	1180-1	502 (600-1)	1500-2 1/2	1520-2 3/4	1520-3
			822 (900-2 1/2)	842 (900-2 3/4)	842 (900-3)

SC-1, 23 FEB 2023 to 23 MAR 2023

SC-1, 23 FEB 2023 to 23 MAR 2023