

WAAS CH 72910 W 11A	APP CRS 114°	Rwy Idg 8650 TDZE 29 Apt Elev 33
---	------------------------	---

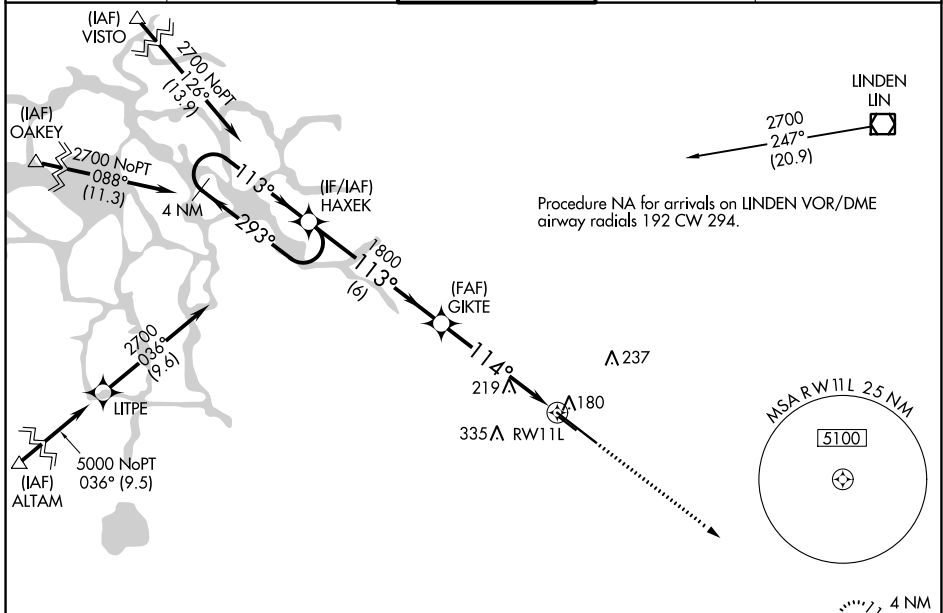
RNAV (GPS) RWY 11L

STOCKTON METRO (SCK)

▽ For uncompensated Baro-VNAV systems, LNAV/VNAV NA below -4°C (25°F) or above 54°C (130°F). DME/DME RNP-0.3 NA.

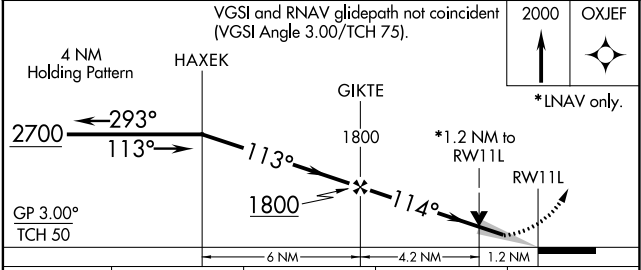
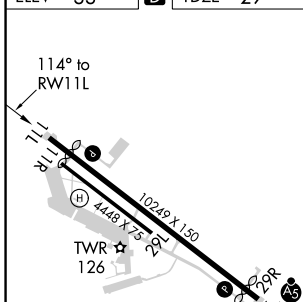
MISSED APPROACH: Climb to 2000 direct OXJEF and hold.

ATIS 118.25	NORCAL APP CON (SE-NW) 123.85 278.3 (N-SE) 125.1 363.2	STOCKTON TOWER * 120.3 (CTAF) 0 239.0	GND CON 121.9	UNICOM 122.95
-----------------------	--	---	-------------------------	-------------------------



A1552

ELEV 33	D	TDZE 29
---------	----------	---------



CATEGORY	A	B	C	D
LPV DA	229-3/4		200 (200-3/4)	
LNAV/VNAV DA	471-1 1/2		442 (500-1 1/2)	
LNAV MDA	480-1	451 (500-1)	480-1 3/8	451 (500-1 3/8)
C CIRCLING	500-1 467 (500-1)	540-1 507 (600-1)	640-1 3/4 607 (700-1 3/4)	640-2 607 (700-2)

SW-2, 23 FEB 2023 to 23 MAR 2023

SW-2, 23 FEB 2023 to 23 MAR 2023