

(CBAIN1.CBAIN) 23054

AL-384 (FAA)

BOEING FLD/KING COUNTY INTL (BFI)
SEATTLE, WASHINGTON

CBAIN ONE DEPARTURE (RNAV)

**TOP ALTITUDE:
2100**

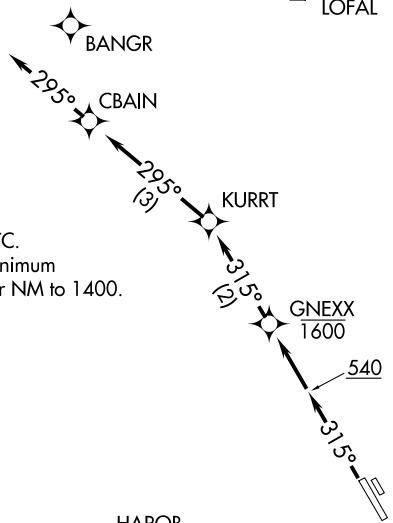
ALPSE

ATIS
127.75
CLNC DEL
132.4
GND CON
121.9
BOEING TOWER
120.6 257.8
SEATTLE DEP CON
120.4 269.125

ARRIE

LOFAL

PAINÉ
PAE



TAKEOFF MINIMUMS

Rwys 14L/R, 32R: NA - ATC.
Rwy 32L: Standard with minimum
climb of 425' per NM to 1400.

NW-1, 23 FEB 2023 to 23 MAR 2023

NW-1, 23 FEB 2023 to 23 MAR 2023

NOTE: RNAV 1.

NOTE: RADAR required.

NOTE: DME/DME/IRU or GPS required.

NOTE: ALDER departures expect direct/vectors to
ALDER/V495/J1-189

NOTE: ALPSE departures expect direct/vectors to ALPSE

NOTE: ARRIE departures expect direct/vectors to ARRIE/J523

NOTE: BANGR departures expect direct/vectors to BANGR

NOTE: BUWZO departures expect direct/vectors to BUWZO

NOTE: ELMAA departures expect direct/vectors to ELMAA/J70

NOTE: HAROB departures expect direct/vectors to HAROB/Q5

NOTE: LOFAL departures expect direct/vectors to LOFAL/V4-495

NOTE: NORMY departures expect direct/vectors to NORMY/V120/J12-70-90

NOTE: OLM departures expect direct/vectors to OLM

NOTE: PAE departures expect direct/vectors to PAE

NOTE: SUMMA departures expect direct/vectors to SUMMA/J5/J54/Q9

NOTE: VAMPS departures expect direct/vectors to VAMPS/V2-298

NOTE: ZADON departures expect direct/vectors to ZADON

NOTE: Chart not to scale.

DEPARTURE ROUTE DESCRIPTION

TAKEOFF RUNWAY 32L: Climb heading 315° to 540, then direct to cross GNEXX at or below 1600, then on track 315° to KURRT, then on track 295° to CBAIN, then on track 295° for vectors to assigned route/fix, maintain 2100 or as assigned by ATC.
Expect clearance to filed altitude/flight level within three minutes after departure.

CBAIN ONE DEPARTURE (RNAV)

(CBAIN1.CBAIN) 12OCT17

SEATTLE, WASHINGTON
BOEING FLD/KING COUNTY INTL (BFI)