

ARLIN FOUR ARRIVAL

AL-322 (FAA)

PHOENIX, ARIZONA

SW-4, 23 FEB 2023 to 23 MAR 2023

ARRIVAL ROUTE DESCRIPTION

BLYTHE TRANSITION (BLH.ARLIN4): From over BLH VORTAC on BLH R-089 and IWA R-256 to ARLIN INT. Thence, . . .

MOHAK TRANSITION (MOHAK.ARLIN4): From over MOHAK INT on GBN R-247 and BXK R-215 to HYDRR INT, then on IWA R-256 to ARLIN INT. Thence, . . .

PHOENIX SKY HARBOR INTL: Rwy 7L/R or 8: From over ARLIN, Expect vectors to final approach course; Rwy 25L/R or 26: From over ARLIN, on IWA R-256 to TUKEE. Expect vectors to final approach course prior to TUKEE.

SATELLITE AIRPORTS: Expect vectors after passing SCOPE or JUDTH.

LOST COMMUNICATIONS: After ARLIN, on IWA R-256 and PXR R-143 to PXR VORTAC.

PHOENIX APP CON
124.1 256.9

PHOENIX TOWER
118.7 278.8 (Rwy 8-26)

120.9 254.3 (Rwy 7L-23R, 7R-25L)

PHOENIX GND CON
119.75 269.2

CHD ATIS
128.325

FFZ ATIS
118.25

DVT ATIS
126.5

IWA ATIS ★
133.5 270.275

PHX D-ATIS
127.575

SDL ATIS ★
118.6

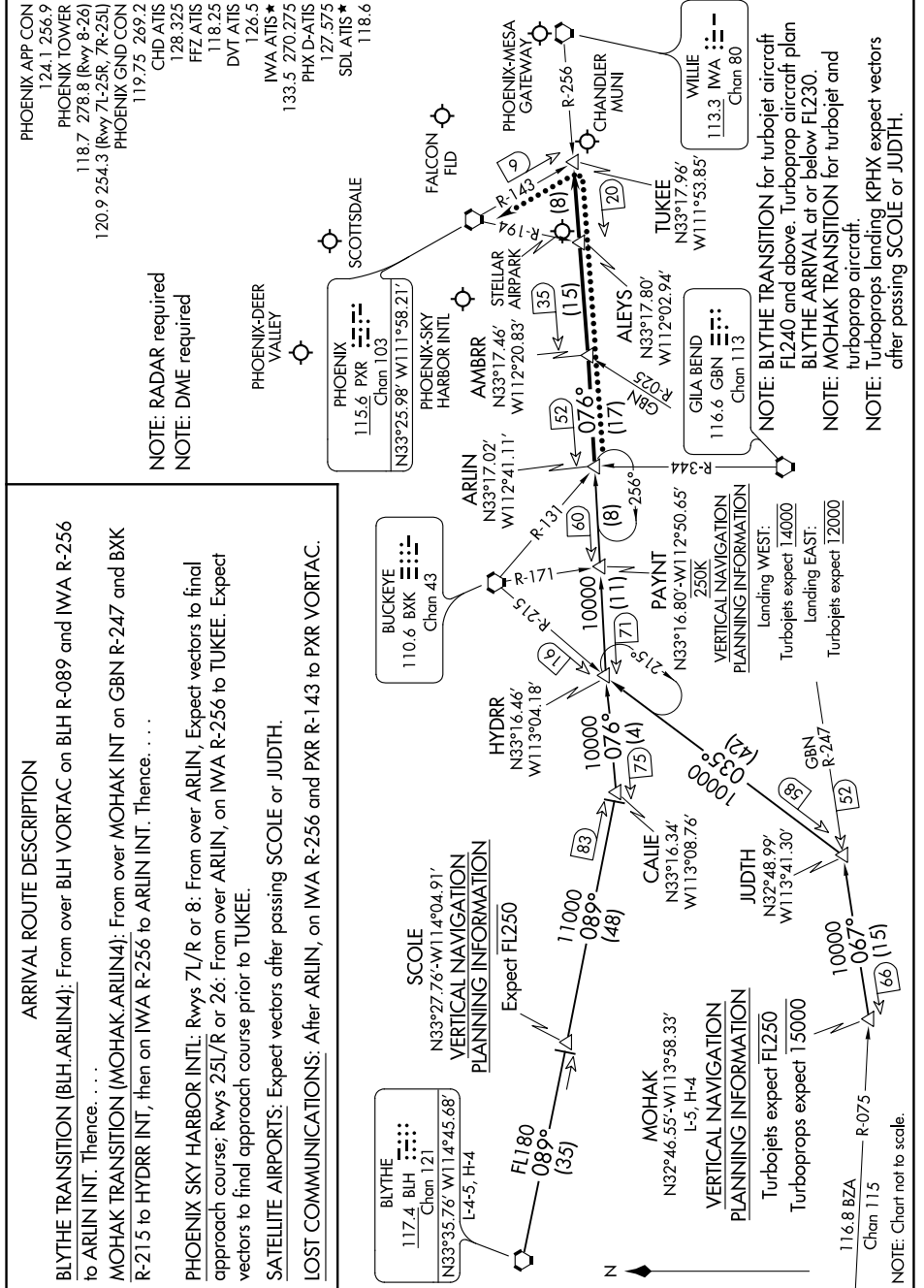
NOTE: RADAR required

NOTE: DME required

PHOENIX-DEER VALLEY

ARLIN FOUR ARRIVAL

PHOENIX, ARIZONA



SW-4, 23 FEB 2023 to 23 MAR 2023