

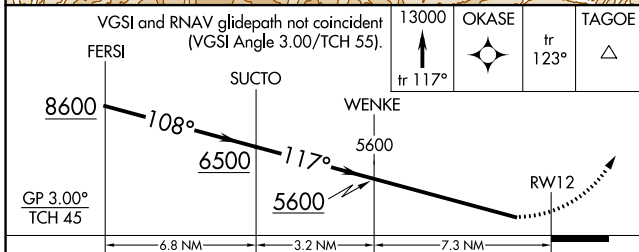
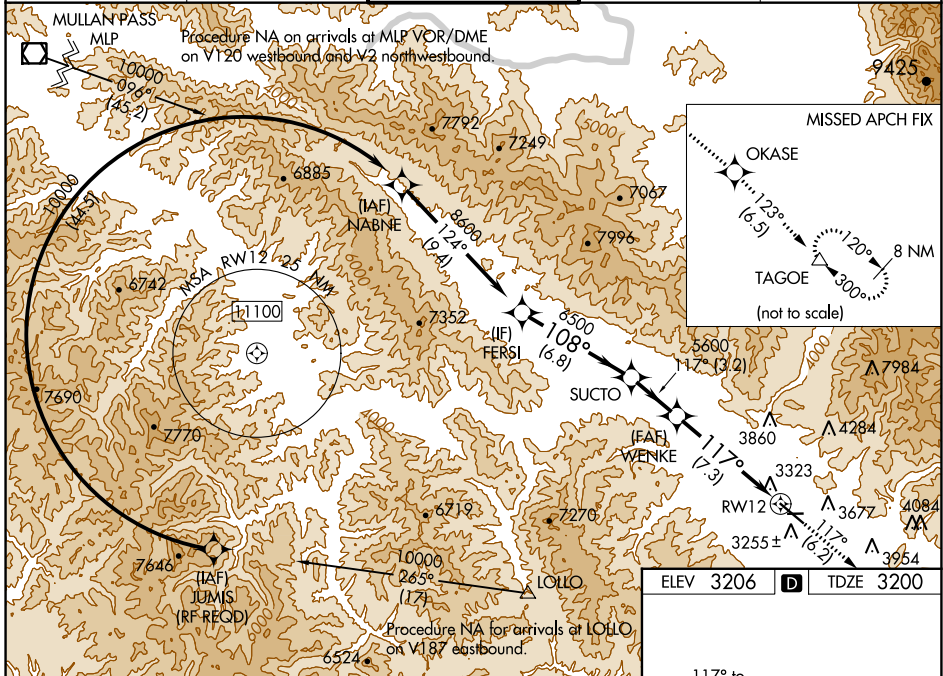
| | | |
|-------------|----------|-------------|
| APP CRS | Rwy Idg | 9501 |
| 117° | TDZE | 3200 |
| | Apt Elev | 3206 |

RNAV (RNP) Z RWY 12

MISSOULA MONTANA (MISO)

| | | | |
|--|--|--------|--|
| RNP AR APCH. | | MALS R | <p>MISSED APPROACH: Climb to 13000 on track 117° to OKASE and on track 123° to TAGOE and hold, continue climb-in-hold to 13000.</p> <p>*Missed approach requires minimum climb of 350 feet per NM to 8300; if unable to meet climb gradient, see RNAV (GPS) Y RWY 12.</p> <p>#Missed approach requires minimum climb of 425 feet per NM to 8300.</p> |
| <p>▼ For uncompensated Baro-VNAV systems, LNAV/VNAV NA below -21° C (-6°F) or above 43°C (109°F).</p> <p>▲ For inop ALS, increase RNP 0.12 all Cats visibility to RVR 6000. For inop ALS, increase RNP 0.30 all Cats visibility to 2½ SM. When local weather not received, procedure NA.</p> | | | |

| | | | | |
|---------------|---------------------|-------------------------------|--------------|---------------|
| ATIS | SPOKANE APP CON* | MISSOULA TOWER* | GND CON | UNICOM |
| 126.65 | 124.9 298.95 | 118.4 (CTAF) 0 377.175 | 121.9 | 122.95 |



| | | | | |
|--------------|---------|---|-------------|---|
| CATEGORY | A | B | C | D |
| RNP 0.12 DA# | 3518/40 | | 318 (400-¾) | |
| RNP 0.30 DA* | 3880-2 | | 680 (700-2) | |

AUTHORIZATION REQUIRED

