

APP CRS	Rwy Idg	<b>9501</b>
<b>298°</b>	TDZE	<b>3206</b>
	Apt Elev	<b>3206</b>

# RNAV (RNP) RWY 30

MISSOULA MONTANA (MSO)

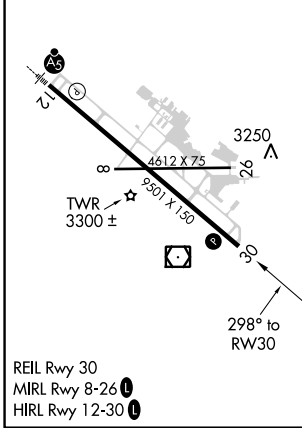
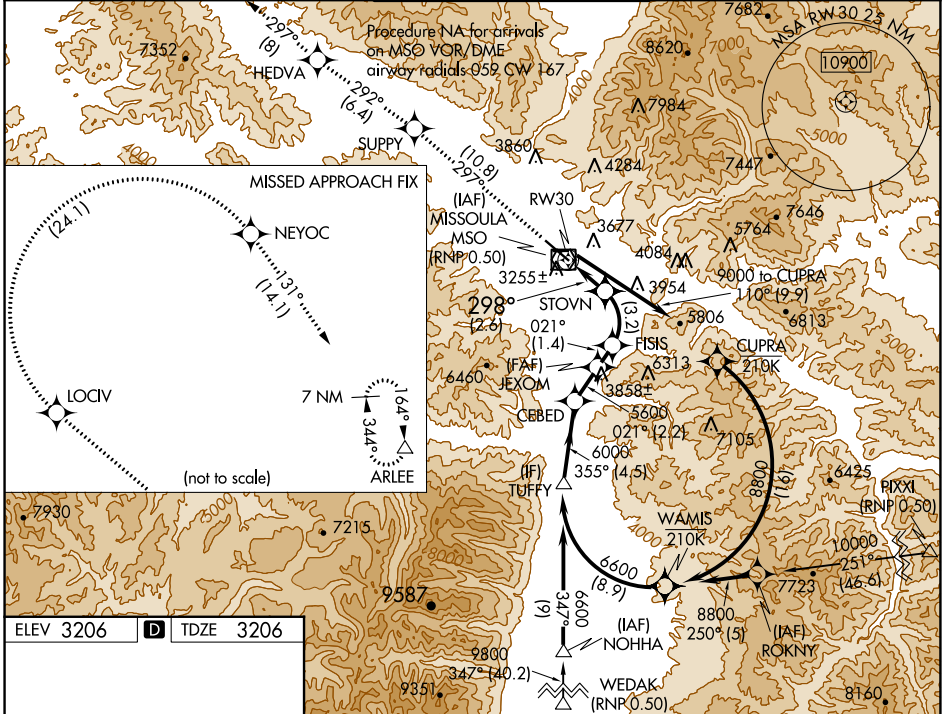
RNP AR APCH. RF required.

**⚠** For uncompensated Baro-VNAV systems, procedure NA below -21°C (-5°F) or above 43°C (109°F). When local altimeter setting not received, procedure NA.

**❄** -12°C

MISSED APPROACH: Climb to 11000 on track 297° to SUPPY and on track 292° to HEDVA and on track 297° to LOCIV, then right turn to NEYOC and on track 131° to ARLEE and hold. \*Misted approach requires minimum climb of 215 feet per NM to 5000.

ATIS <b>126.65</b>	SPOKANE APP CON * <b>124.9 298.95</b>	MISSOULA TOWER * <b>118.4 (CTAF) 377.175</b>	GND CON <b>121.9</b>	UNICOM <b>122.95</b>
-----------------------	------------------------------------------	-------------------------------------------------	-------------------------	-------------------------



11000 SUPPY	tr 297°	HEDVA			
		tr 292°			
			JEXOM	CEBED	TUFFY
			FISIS 5135	5600	
			STOVN 4089	021°	355° 6600
				021°	6000
					GP 3.00°
					TCH 50
			2.6 NM	3.2 NM	1.4 NM
			2.2 NM	4.5 NM	
CATEGORY	A	B	C	D	
RNP 0.30 DA *	3524-1 318 (400-1)				
RNP 0.30 DA	3582-1¼ 376 (400-1¼)				

## AUTHORIZATION REQUIRED

NW-1, 23 FEB 2023 to 23 MAR 2023

NW-1, 23 FEB 2023 to 23 MAR 2023