

VIICE TWO ARRIVAL (RNAV) Transition Routes

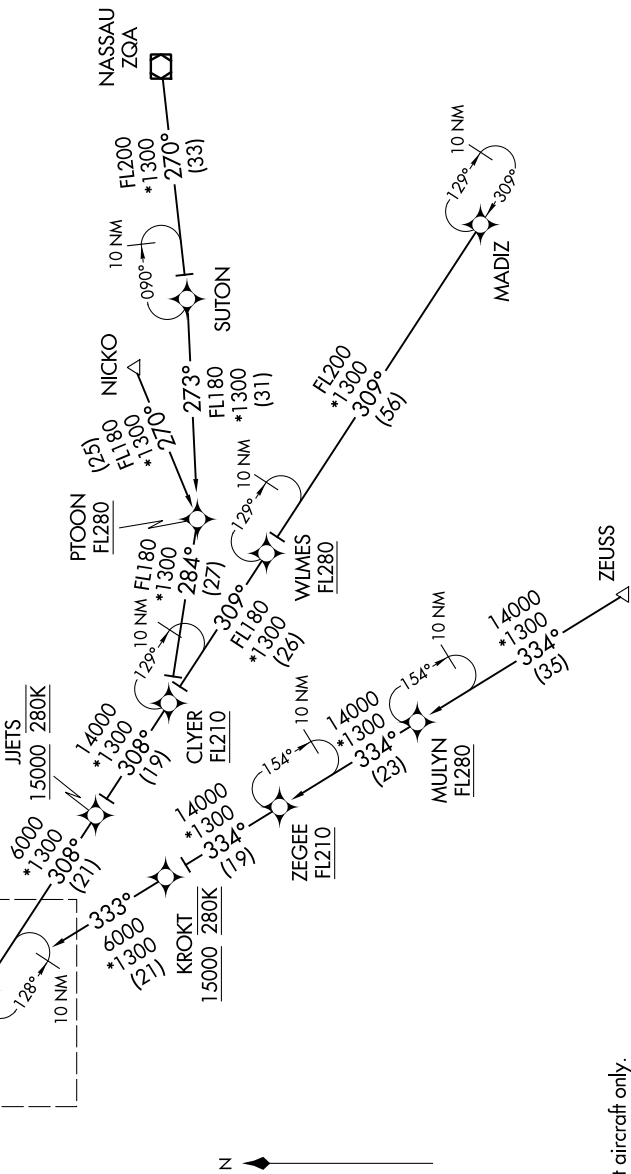
MIAMI, FLORIDA

SE-3, 23 FEB 2023 to 23 MAR 2023

MIAMI APP CON
 120.5 350.225
 KHST ATIS *
 132.275 269.9
 MIA D-ATIS
 119.15
 TMB ATIS
 124.0
 X51 AMOS-3
 118.375

See following
 page for
 arrival routes.

RNAV 1 - DME/DME/IRU or GPS.
 ZEUSS, MADIZ, ZQA, NICKO TRANSITION: GPS
 RADAR required.



MADIZ TRANSITION (MADIZ.VIICE2)
 NASSAU TRANSITION (ZQA.VIICE2)
 NICKO TRANSITION (NICKO.VIICE2)
 PTOON TRANSITION (PTOON.VIICE2)
 ZEGEE TRANSITION (ZEGEE.VIICE2)
 ZEUSS TRANSITION (ZEUSS.VIICE2)

NOTE: Jet aircraft only.
 NOTE: Landing east use Rwy 9 Transition, landing west use Rwy 30 Transition. Expect Rwy assignment from MIA approach prior to VIICE.
 NOTE: Do not file PTOON or ZEGEE Transition - to be assigned by ATC.

(CONTINUED ON FOLLOWING PAGE)

NOTE: Chart not to scale.

SE-3, 23 FEB 2023 to 23 MAR 2023

VIICE TWO ARRIVAL (RNAV) Transition Routes

MIAMI, FLORIDA