

WAAS CH <b>72603</b> <b>W05A</b>	APP CRS <b>047°</b>	Rwy Idg TDZE Apt Elev	<b>8000</b> <b>956</b> <b>956</b>
--	------------------------	-----------------------------	---

# RNAV (GPS) RWY 5

DONALDSON FLD (GYH)

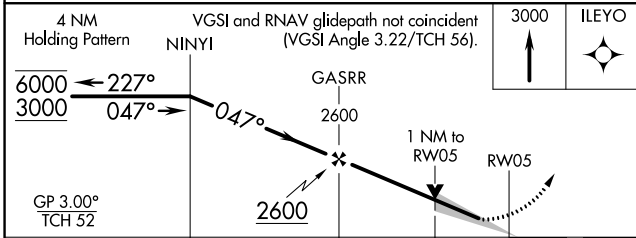
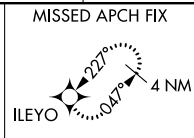
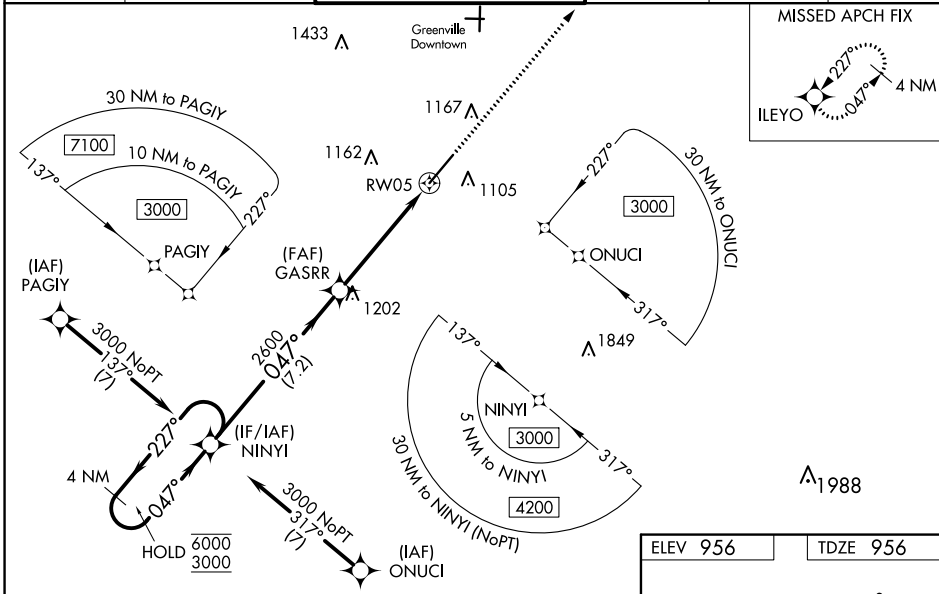
RNP APCH - GPS.

**⚠** Baro-VNAV and VDP NA when using Greer altimeter setting. For uncompensated Baro-VNAV systems, LNAV/VNAV NA below -16°C or above 54°C. When local altimeter setting not received, use Greer altimeter setting and increase LPV DA to 1185 feet; increase LNAV/VNAV DA to 1279; increase all MDAs 40 feet and LNAV visibility Cts C and D ½ SM. For inop ALS, increase LNAV/VNAV visibility all Cts to ¾ SM and increase LNAV visibility Cts C/D to 1 ½ SM.

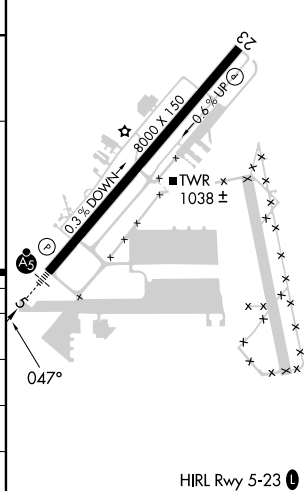


MISSED APPROACH:  
Climb to 3000 direct  
ILEYO and hold.

AWOS-3 <b>127.325</b>	GREER APP CON ★ <b>118.8 270.275</b>	<b>DONALDSON TOWER ★</b> <b>133.325 (CTAF) 0 269.25</b>	GND CON <b>121.4</b>	CLNC DEL <b>121.4</b>	UNICOM <b>122.7</b>
--------------------------	---	--	-------------------------	--------------------------	------------------------



ELEV 956	TDZE 956
----------	----------



CATEGORY	A	B	C	D
LPV DA		1156-½	200 (200-½)	
LNAV/VNAV DA		1250-½	294 (300-½)	
LNAV MDA	1360-½	404 (500-½)	1360-¾	404 (500-¾)
CIRCLING	1420-1 464 (500-1)	1480-1 524 (600-1)	1480-1½ 524 (600-1½)	1520-2 564 (600-2)

HIRL Rwy 5-23 **Ⓢ**

SE-2, 23 FEB 2023 to 23 MAR 2023

SE-2, 23 FEB 2023 to 23 MAR 2023