

VOR/DME RWY 36

VOR/DME FTK 109.6 Chan 33	APCH CRS 349°	Rwy ldg TDZE 5184 740 Arpt Elev 754
---	-------------------------	---

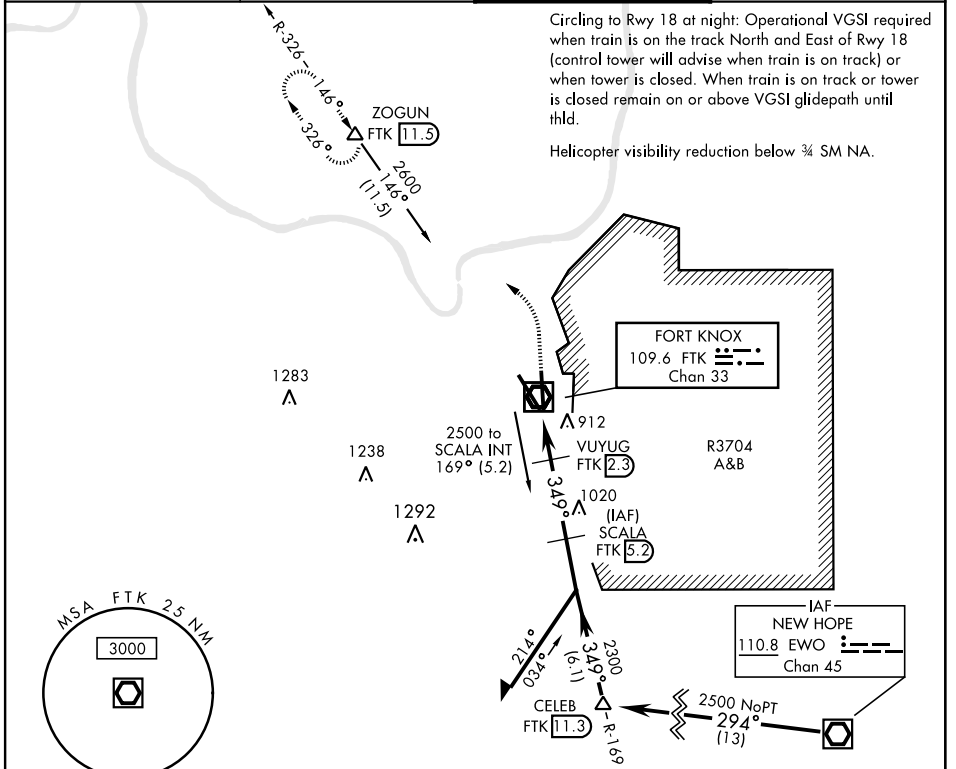
AL-151 [USA]

GODMAN AAF (KFTK)

▼ * When ALS inop increase CAT D vis to 1½ mile.
** Circling not authorized E of Rwy 18-36.

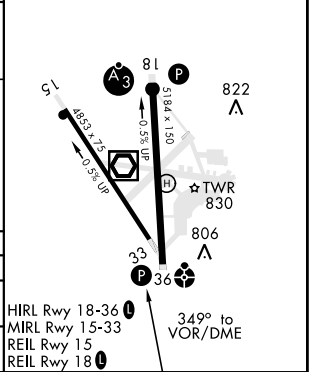
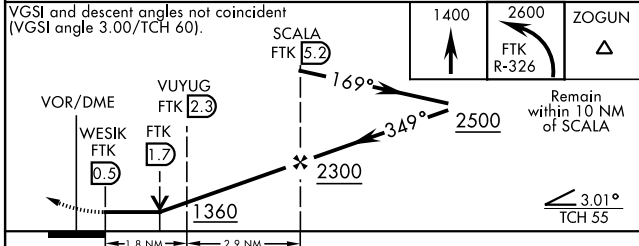
ODALS
MISSED APPROACH: Climb to 1400, then climbing left turn to 2600 on FTK VOR/DME R-326 to ZOGUN INT/FTK 11.5 DME and hold.

ATIS 109.6	LOUISVILLE APP CON 132.075 327.0	TOWER ★ 133.35 (CTAF) 0	GND CON 121.9 239.3
----------------------	--	-----------------------------------	-------------------------------



Circling to Rwy 18 at night: Operational VGSI required when train is on the track North and East of Rwy 18 (control tower will advise when train is on track) or when tower is closed. When train is on track or tower is closed remain on or above VGSI glidepath until hld.
Helicopter visibility reduction below ¾ SM NA.

ELEV	754	TDZE	740
------	-----	------	-----



CATEGORY	A	B	C	D
S-36*	1180-¾ 439 (500-¾)		1180-1½ 439 (500-1½)	
CIRCLING**	1300-1 545 (600-1)		1300-1½ 545 (600-1½)	1320-2 565 (600-2)

HIRL Rwy 18-36
MIRL Rwy 15-33
REIL Rwy 15
REIL Rwy 18

VOR/DME RWY 36

SE-1, 23 FEB 2023 to 23 MAR 2023

SE-1, 23 FEB 2023 to 23 MAR 2023