

FORT KNOX, KENTUCKY

# ILS or LOC/DME RWY 18

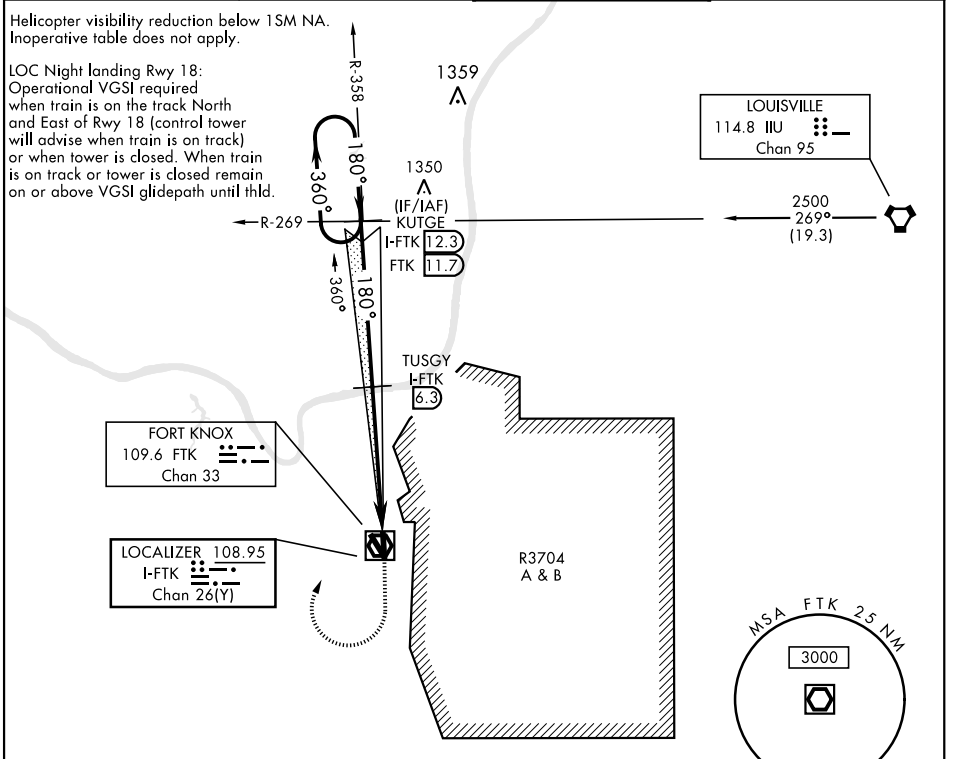
LOC/DME I-FTK <b>108.95</b> Chan <b>26 (Y)</b>	APCH CRS <b>180°</b>	Rwy Idg THRE <b>754</b> Arpt Elev <b>754</b>	AL-151 [USA]	GODMAN AAF (KF TK)
--	-------------------------	--	--------------	--------------------

▼ \*S-ILS 18 mins NA when train is on track North and East of Rwy 18, control twr will advise when train is on track. S-ILS 18 mins NA when control twr closed.  
\*\* Circling NA E of Rwy 18-36.



MISSED APPROACH: Climb to 1300, then climbing right turn to 2500 on heading 030° to intercept FTK VOR/DME R-358 to KUTGE INT/I-FTK 12.3 DME and hold.

ATIS <b>109.6</b>	LOUISVILLE APP CON <b>132.075 327.0</b>	TOWER ★ <b>133.35 (CTAF) 0</b>	GND CON <b>121.9 239.3</b>
----------------------	--	-----------------------------------	-------------------------------



ELEV 754	THRE 754				
		1300 2500 KUTGE I-FTK <b>12.3</b> FTK <b>R-358</b>	TUSGY I-FTK <b>6.3</b>	KUTGE FTK <b>R-358</b> I-FTK <b>12.3</b> FTK <b>11.7</b>	2500 180° 360° 180° GS 3.00° TCH 56
CATEGORY S-ILS 18 * S-LOC 18 CIRCLING **		A	B	C	D
S-ILS 18 *			1005-1	250 (300-1)	
S-LOC 18			1120-1	365 (400-1)	
CIRCLING **		1300-1 545 (600-1)		1300-1½ 545 (600-1½)	1320-2 565 (600-2)

FORT KNOX, KENTUCKY 37°54'N-85°58'W GODMAN AAF (KF TK)

Orig C 08OCT20

# ILS or LOC/DME RWY 18

SE-1, 23 FEB 2023 to 23 MAR 2023

SE-1, 23 FEB 2023 to 23 MAR 2023