

WAAS CH 72927 W36A	APP CRS 359°	Rwy Idg TDZE Apt Elev	4850 59 61
--	------------------------	-----------------------------	---------------------------------------

RNAV (GPS) RWY 36

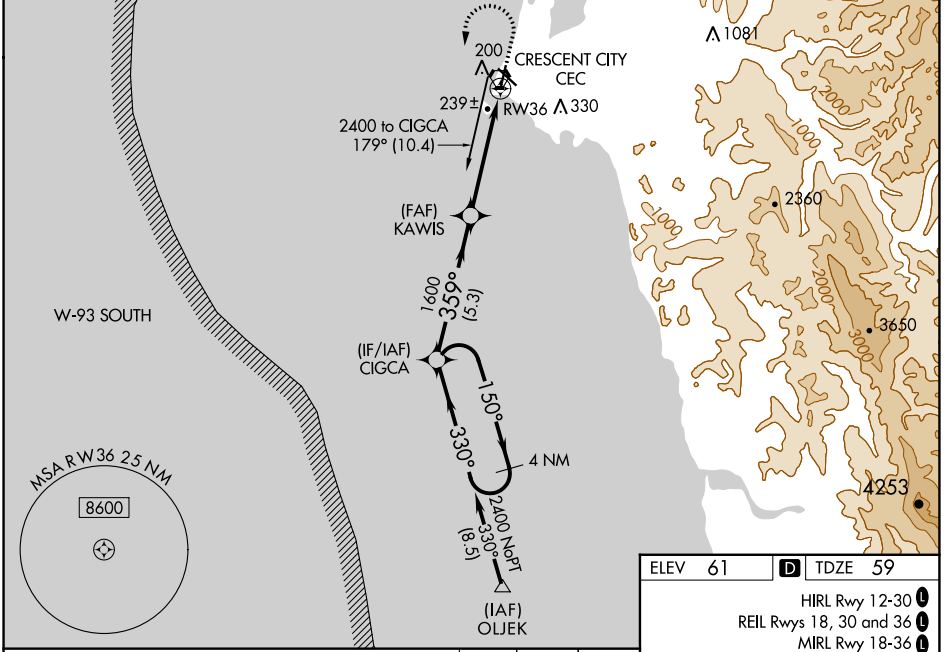
JACK MC NAMARA FLD (CEC)

RNP APCH.

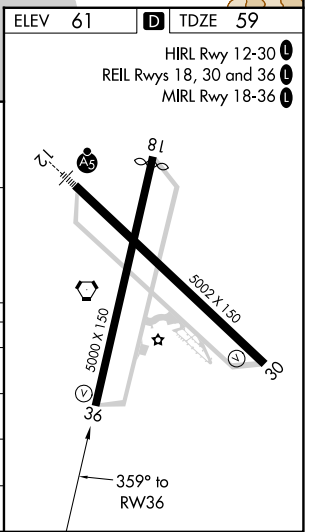
▼ Baro-VNAV NA when using Brookings altimeter setting. For uncompensated Baro-VNAV systems, LNAV/VNAV NA below -15°C or above 54°C. When local altimeter setting not received, use Brookings altimeter setting and increase LPV DA to 406 and LNAV/VNAV DA to 505 and all MDA 100 feet; increase LPV all Cats and LNAV Cat C/D and Circling Cat D visibilities ¼ SM, increase LNAV/VNAV all Cats visibility ⅜ SM, and Circling Cat C visibility ½ SM. Rwy 36 helicopter visibility reduction below 1 SM NA. Straight-In Rwy 36 at night, operational VGSI required, remain on or above VGSI glidepath until threshold. Circling Rwy 18, 30 NA at night.

MISSED APPROACH: Climb to 1300 then climbing left turn to 2400 direct CIGCA and hold.

ASOS 119.925	SEATTLE CENTER 124.85 306.3	UNICOM 122.8 (CTAF) 0
------------------------	---------------------------------------	---------------------------------



4 NM Holding Pattern		CIGCA	KAWIS	1300	2400	CIGCA
2400 ← 150°		→ 330°	1600	↑	↶	✦
GP 3.00° TCH 58		→ 359°	1600	RW36		
		→ 330°	1600			
		→ 330°	1600			
		→ 330°	1600			
CATEGORY	A	B	C	D		
LPV DA	309-1		250 (300-1)			
LNAV/VNAV DA	408-1½		349 (400-1½)			
LNAV MDA	500-1	441 (500-1)	500-1¾	441 (500-1¾)		
Ⓢ CIRCLING	540-1	479 (500-1)	640-1½	640-2		
			579 (600-1½)	579 (600-2)		



SW-2, 23 FEB 2023 to 23 MAR 2023

SW-2, 23 FEB 2023 to 23 MAR 2023