

WAAS CH 45635 W33A	APP CRS 330°	Rwy Idg TDZE 8303 7926 Apt Elev 7950
----------------------------------------	------------------------	--------------------------------------------------------------------

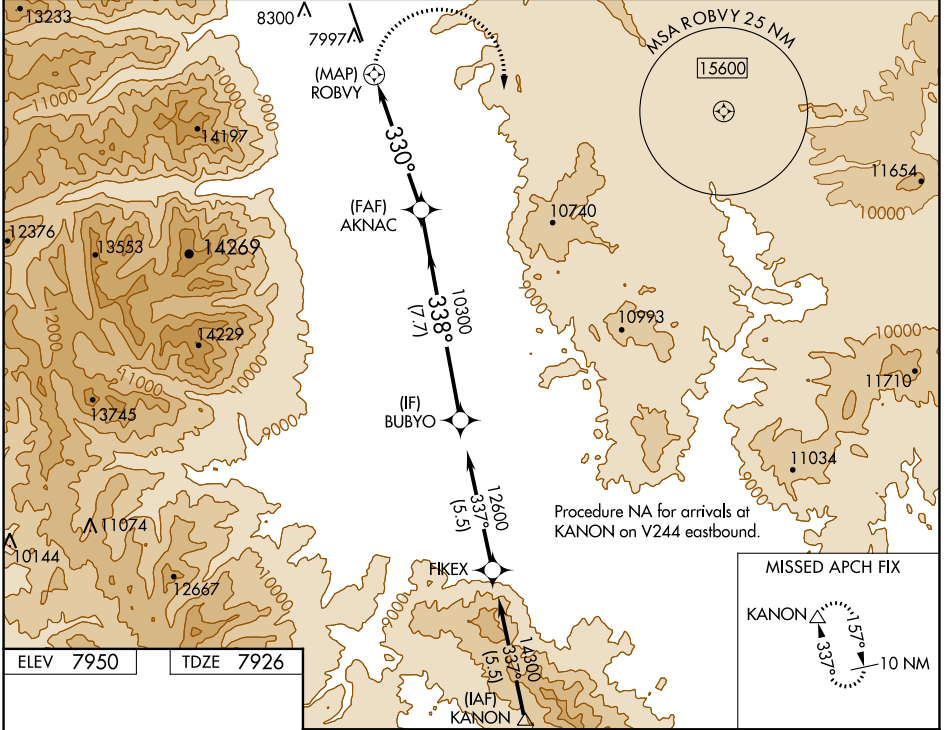
RNAV (GPS) RWY 33

CENTRAL COLORADO RGNL (A.E.J)

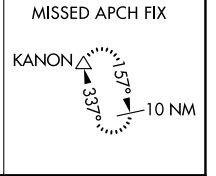
⚠ Circling NA northeast of Rwy 15-33. DME/DME RNP-0.3 NA.
⚠ NA When local altimeter setting not received, use Solida altimeter setting and increase all MDA 100 feet. VDP NA with Solida altimeter setting.
⚠ -22°C #Missed approach requires minimum climb of 425 feet per NM to 14100.

MISSED APPROACH: Climbing right turn to 16000 direct KANON and hold, continue climb-in-hold to 16000.

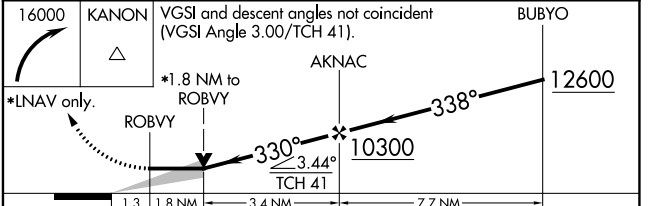
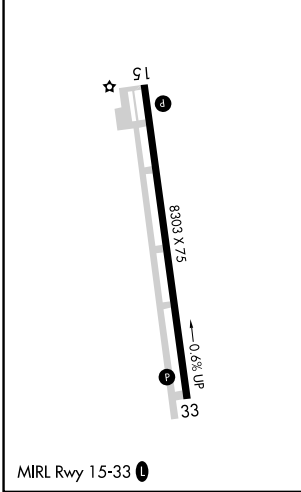
AWOS-3 132.925	DENVER CENTER 119.85 363.15	UNICOM 122.8 (CTAF) 0
--------------------------	---------------------------------------	---------------------------------



Procedure NA for arrivals at KANON on V244 eastbound.



ELEV 7950	TDZE 7926
-----------	-----------



CATEGORY	A	B	C	D
#LP MDA	8960-1½	1034 (1100-1½)	8960-3 1034 (1100-3)	NA
LP MDA	9840-1½	1914 (1900-1½)	9840-3 1914 (1900-3)	NA
#LNAV MDA	9300-1½	1374 (1400-1½)	9300-3 1374 (1400-3)	NA
LNAV MDA	9980-1½	2054 (2100-1½)	9980-3 2054 (2100-3)	NA
ⓐ CIRCLING	9980-1½	2030 (2100-1½)	9980-3 2030 (2100-3)	NA

SW-1, 29 DEC 2022 to 26 JAN 2023

SW-1, 29 DEC 2022 to 26 JAN 2023