

# PUEBLO ONE DEPARTURE (OBSTACLE) (RNAV)

DENVER CENTER  
119.85 363.15  
UNICOM  
122.8 (CTAF)

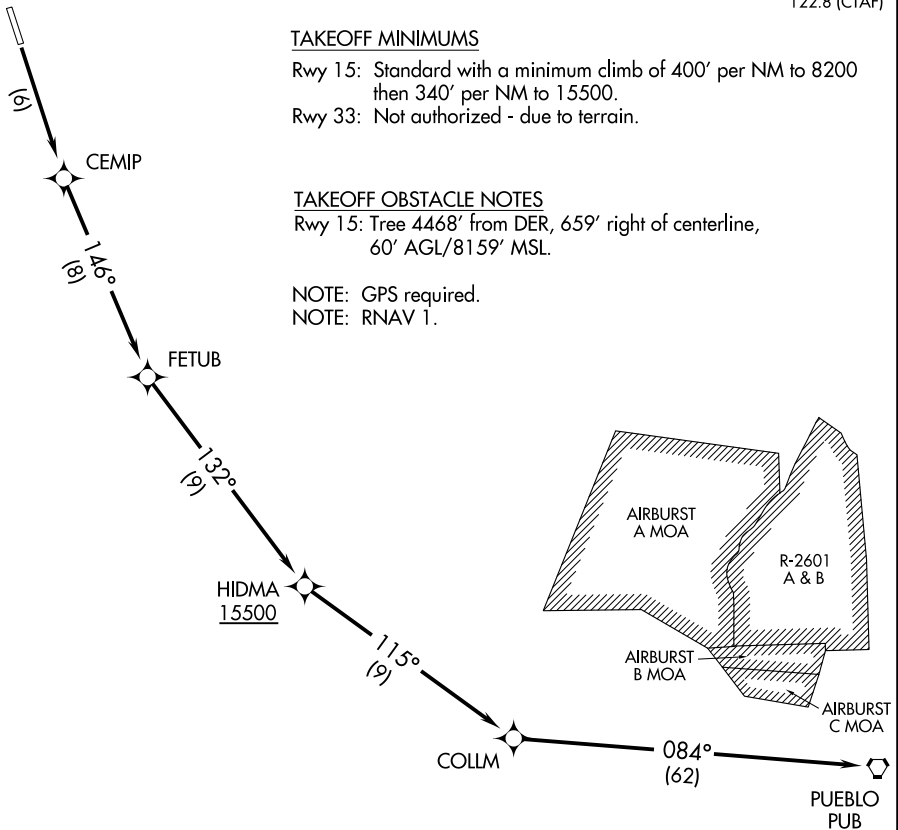
### TAKEOFF MINIMUMS

Rwy 15: Standard with a minimum climb of 400' per NM to 8200 then 340' per NM to 15500.  
Rwy 33: Not authorized - due to terrain.

### TAKEOFF OBSTACLE NOTES

Rwy 15: Tree 4468' from DER, 659' right of centerline, 60' AGL/8159' MSL.

NOTE: GPS required.  
NOTE: RNAV 1.



NOTE: Chart not to scale.

### DEPARTURE ROUTE DESCRIPTION

TAKEOFF RUNWAY 15: Climb direct CEMIP WP, then via 146° track to FETUB WP then via 132° track to cross HIDMA WP at or above 15500', then via depicted route to PUB VORTAC.

TAKEOFF RUNWAY 33: Not authorized.

SW-1, 29 DEC 2022 to 26 JAN 2023

SW-1, 29 DEC 2022 to 26 JAN 2023