

APP CRS <b>297°</b>	Rwy Idg <b>2621</b>
	TDZE <b>5</b>
	Apt Elev <b>5</b>

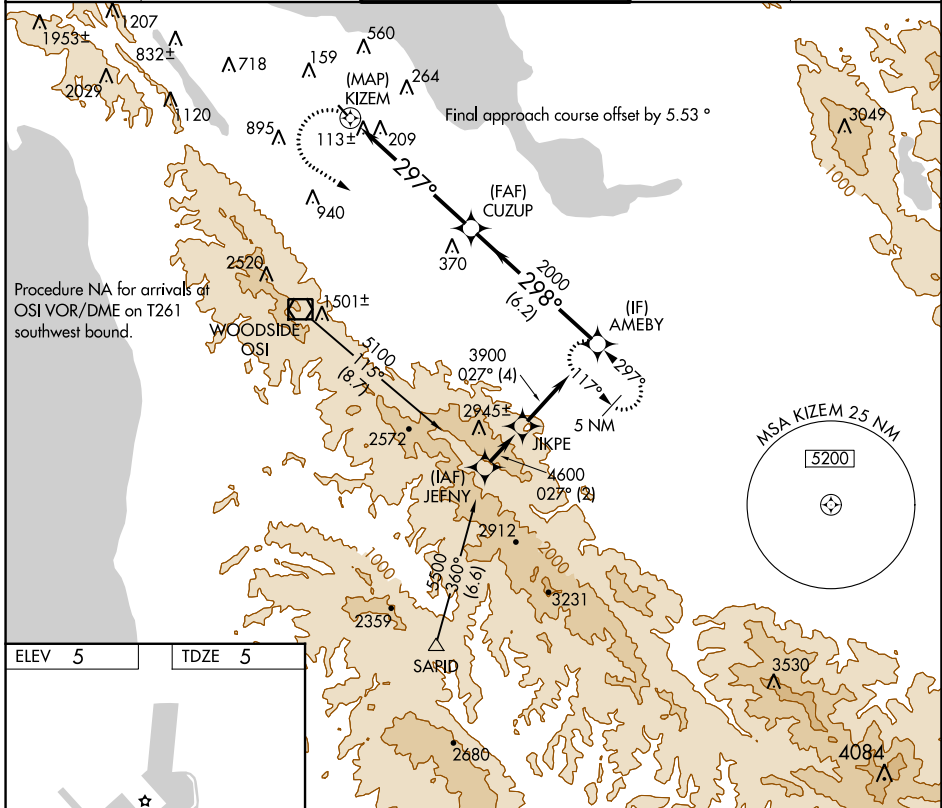
# RNAV (GPS) Y RWY 30

SAN CARLOS (SQL)

**▼** DME/DME RNP-0.3 NA. When local altimeter setting not received, use San Francisco Intl altimeter setting and increase all MDA 40 feet.  
**▲** Rwy 30 visibility reduction by helicopters below 1 SM NA. Circling NA west of Rwy 12-30.

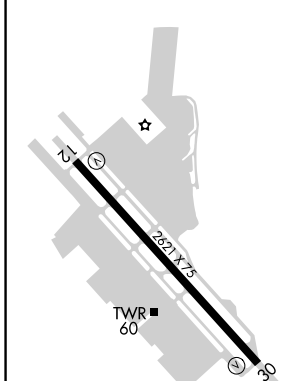
**MISSED APPROACH:** Climbing left turn to 5400 direct AMEBY and hold, continue climb-in-hold to 5400.

ATIS <b>125.9</b>	NORCAL APP CON <b>133.95 317.6</b>	SAN CARLOS TOWER ★ <b>119.0 (CTAF) 326.2</b>	GND CON <b>121.6</b>	UNICOM <b>122.95</b>
----------------------	---------------------------------------	---	-------------------------	-------------------------

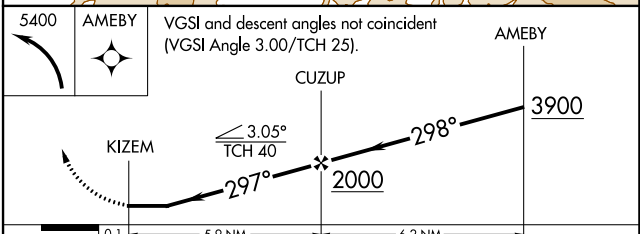


Procedure NA for arrivals at OSI VOR/DME on T261 southwest bound.

ELEV 5	TDZE 5
--------	--------



REIL Rwy 12 and 30 **①**  
 MIRL Rwy 12-30 **②**



CATEGORY	A	B	C	D
LNAV MDA	1260-1¼	1255 (1300-1¼)		NA
CIRCLING	1260-1¼ 1255 (1300-1¼)	1260-1½ 1255 (1300-1½)		NA

SW-2, 29 DEC 2022 to 26 JAN 2023

SW-2, 29 DEC 2022 to 26 JAN 2023