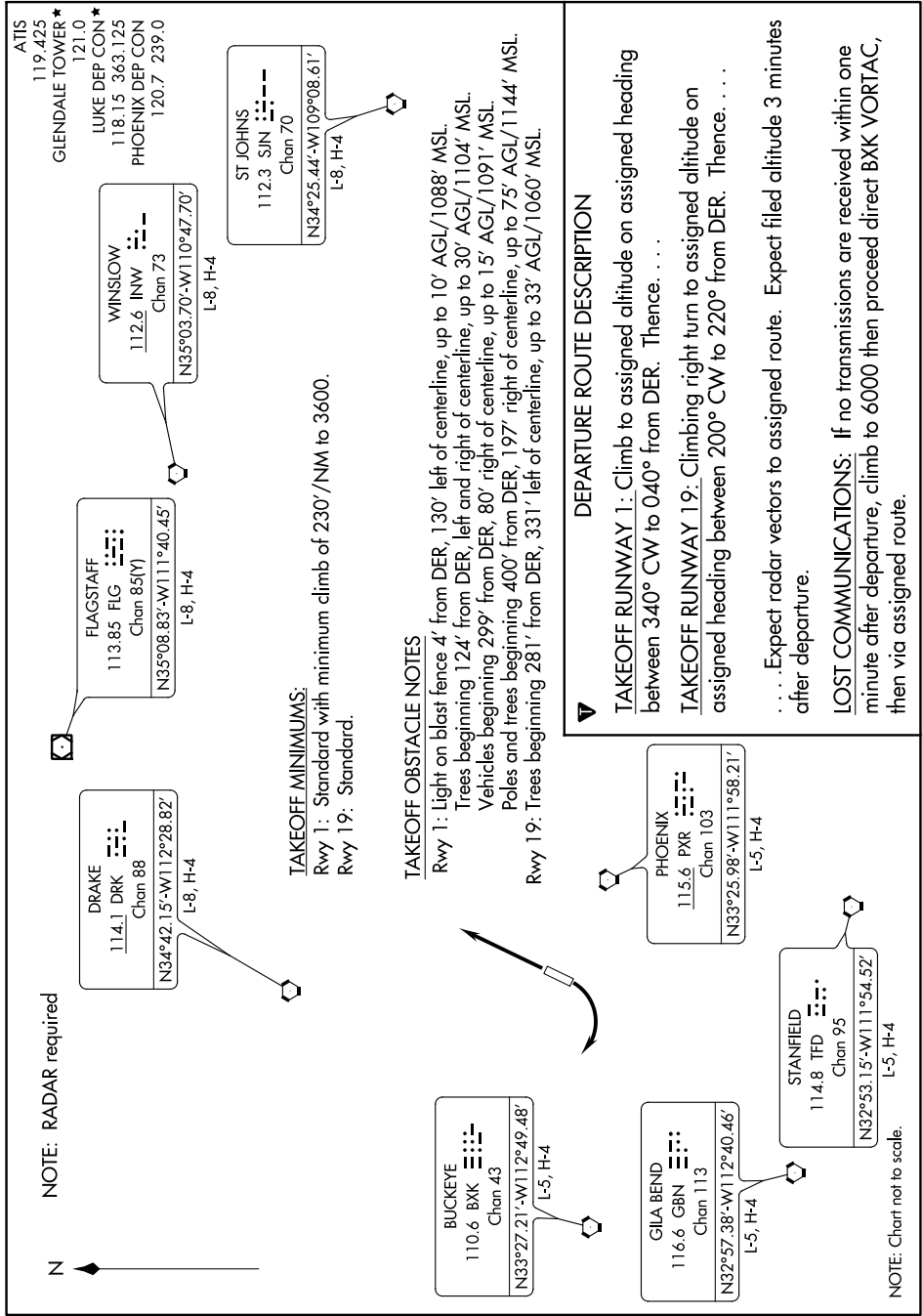


# GLENDALE ONE DEPARTURE

SL-6915 (FAA)

GLENDALE MUNI (G<sup>ET</sup>U)  
GLENDALE, ARIZONA

SW-4, 29 DEC 2022 to 26 JAN 2023



# GLENDALE ONE DEPARTURE

GLENDALE, ARIZONA  
GLENDALE MUNI (G<sup>ET</sup>U)

SW-4, 29 DEC 2022 to 26 JAN 2023

ATIS  
119.425  
GLENDALE TOWER ★  
121.0  
LUKE DEP CON ★  
118.15 363.125  
PHOENIX DEP CON  
120.7 239.0

WINSLOW  
112.6 INW  
Chan 73  
N35°03.70'W110°47.70'  
L-8, H-4

FLAGSTAFF  
113.85 FLG  
Chan 85[V]  
N35°08.83'W111°40.45'  
L-8, H-4

DRAKE  
114.1 DRK  
Chan 88  
N34°42.15'W112°28.82'  
L-8, H-4

ST JOHNS  
112.3 SJN  
Chan 70  
N34°25.44'W109°08.61'  
L-8, H-4

**TAKEOFF MINIMUMS:**  
Rwy 1: Standard with minimum climb of 230' /NM to 3600.  
Rwy 19: Standard.

**TAKEOFF OBSTACLE NOTES**  
Rwy 1: Light on blast fence 4' from DER, 130' left of centerline, up to 10' AGL/1088' MSL.  
Trees beginning 124' from DER, left and right of centerline, up to 30' AGL/1104' MSL.  
Vehicles beginning 299' from DER, 80' right of centerline, up to 15' AGL/1091' MSL.  
Poles and trees beginning 400' from DER, 197' right of centerline, up to 75' AGL/1144' MSL.  
Rwy 19: Trees beginning 281' from DER, 331' left of centerline, up to 33' AGL/1060' MSL.

### DEPARTURE ROUTE DESCRIPTION

**TAKEOFF RUNWAY 1:** Climb to assigned altitude on assigned heading between 340° CW to 040° from DER. Thence. . . .  
**TAKEOFF RUNWAY 19:** Climbing right turn to assigned altitude on assigned heading between 200° CW to 220° from DER. Thence. . . .

. . . . Expect radar vectors to assigned route. Expect filed altitude 3 minutes after departure.

**LOST COMMUNICATIONS:** If no transmissions are received within one minute after departure, climb to 6000 then proceed direct BXX VORTAC, then via assigned route.

NOTE: Chart not to scale.