

WAAS CH <b>70316</b> <b>W17A</b>	APP CRS <b>175°</b>	Rwy Idg <b>7000</b> TDZE <b>25</b> Apt Elev <b>25</b>
--	------------------------	---

# RNAV (GPS) RWY 17

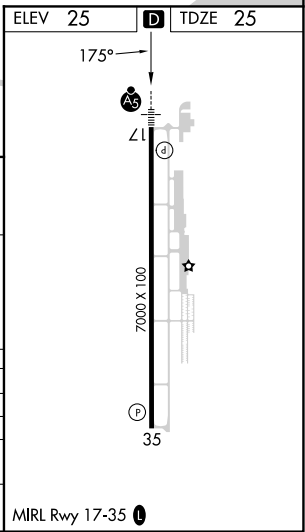
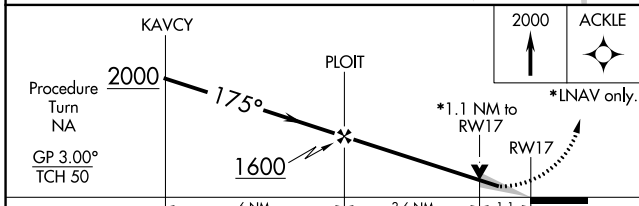
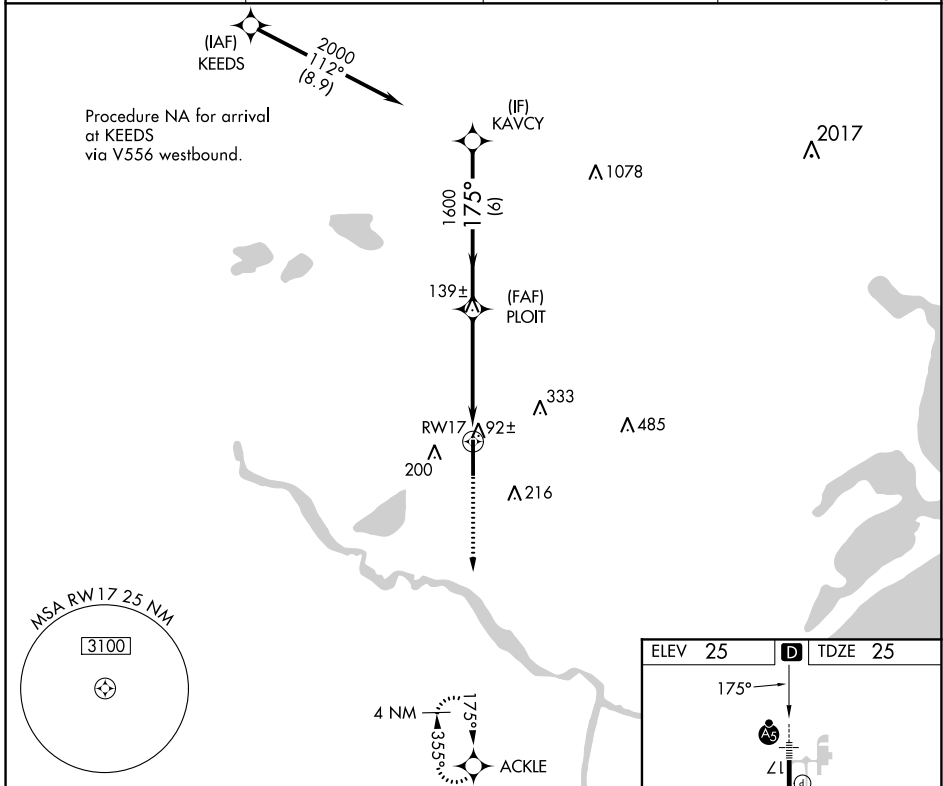
TEXAS GULF COAST RGNL (L.B.X)

**⚠** DME/DME RNP-0.3 NA. Baro-VNAV NA below -16°C (4°F). When local altimeter setting not received, use William P. Hobby altimeter setting and increase all DAs/MDAs 100 feet and Circling Cat D visibility ¼ SM. Baro-VNAV and VDP NA when William P. Hobby altimeter setting. Circling NA east of Rwy 17-35. For Inop MALSR, increase LPV visibility to 1 mile all Cats, LNAV Cat D visibility to 1¼ mile.



**MISSED APPROACH:**  
Climb to 2000 direct  
ACKLE and hold.

ASOS <b>119.925</b>	HOUSTON APP CON <b>134.45 284.0</b>	CLNC DEL <b>125.2</b>	UNICOM <b>123.0 (CTAF) 1</b>
------------------------	--	--------------------------	---------------------------------



CATEGORY	A	B	C	D
LPV DA		282-1/2	257 (300-1/2)	
LNAV/VNAV DA		360-3/4	335 (400-3/4)	
LNAV MDA		420-1/2	395 (400-1/2)	420-1 395 (400-1)
<b>C</b> CIRCLING	480-1 1/4 455 (500-1 1/4)	500-1 1/4 475 (500-1 1/4)	500-1 1/2 475 (500-1 1/2)	620-2 595 (600-2)

SC-5, 29 DEC 2022 to 26 JAN 2023

SC-5, 29 DEC 2022 to 26 JAN 2023