

WAAS CH <b>86805</b> <b>W36A</b>	APP CRS <b>005°</b>	Rwy ldg TDZE <b>417</b> Apt Elev <b>418</b>	<b>4999</b>
--	------------------------	---	-------------

# RNAV (GPS) RWY 36

PERRY-HOUSTON COUNTY (PXE)

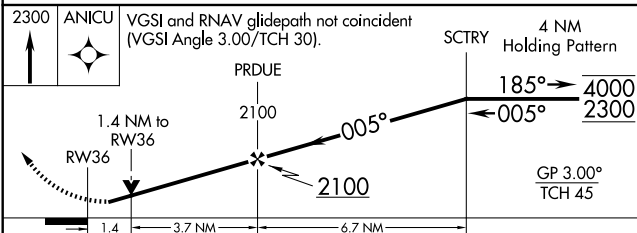
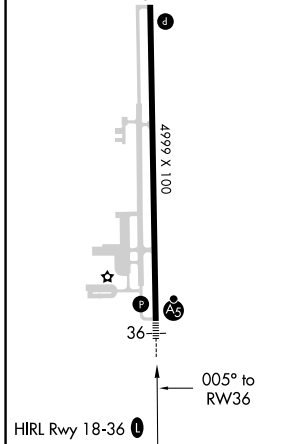
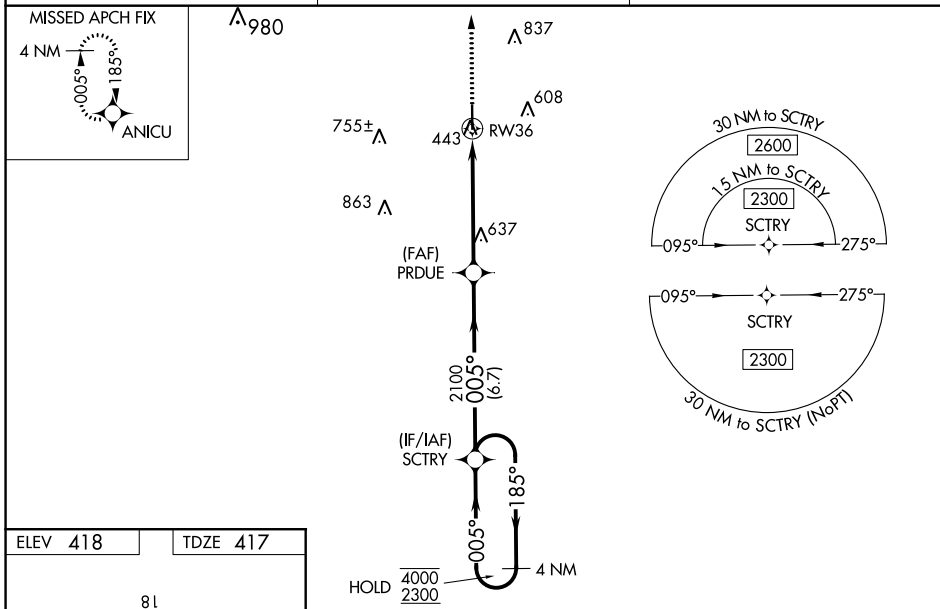
RNP APCH-GPS.

**⚠** Baro-VNAV and VDP NA when using Middle Georgia Rgnl altimeter setting. Rwy 36 helicopter visibility reduction below 3/4 SM NA. Inop table does not apply to LPV and LANV/VNAV all Cats. For uncompensated Baro-VNAV systems, LNAV/VNAV NA below -15°C or above 54°C. When local altimeter setting not received, use Middle Georgia Rgnl altimeter setting and increase LPV DA and LNAV/VNAV DA to 705 feet; increase all MDAs 40 feet; and Circling visibility Cat C/D 1/2 SM. For inop ALS, increase LNAV Cats A/B visibility to 1 SM and Cat C/D to 1 3/8 SM. For inop ALS, when using Middle Georgia Rgnl altimeter setting; increase LPV and LNAV/VNAV all Cats visibility to 2/8 SM and LNAV Cat A/B visibility to 1 SM.

MALSRS

**⚠ MISSED APPROACH:**  
Climb to 2300 direct ANICU and hold.

AWOS-3 <b>123.825</b>	ATLANTA APP CON ★ <b>124.2 279.6</b>	UNICOM <b>122.725 (CTAF) 0</b>
--------------------------	---	-----------------------------------



CATEGORY	A	B	C	D
LPV DA		667-3/4	250 (300-3/4)	
LNAV/VNAV DA		667-3/4	250 (300-3/4)	
LNAV MDA	900-3/4	483 (500-3/4)	900-1	483 (500-1)
<b>C</b> CIRCLING	900-1	482 (500-1)	1140-2 722 (800-2)	1280-2 3/4 862 (900-2 3/4)

SE-4, 29 DEC 2022 to 26 JAN 2023

SE-4, 29 DEC 2022 to 26 JAN 2023