

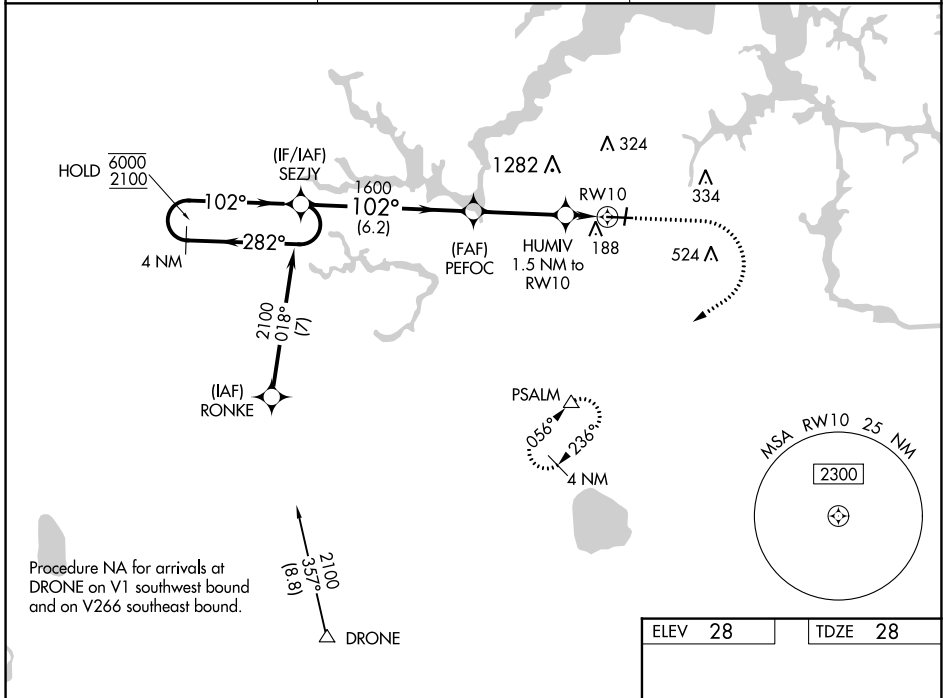
WAAS CH 58236 W10A	APP CRS 102°	Rwy Idg 5350 TDZE 28 Apt Elev 28
--	------------------------	---

RNAV (GPS) RWY 10

HAMPTON ROADS EXEC (PVG)

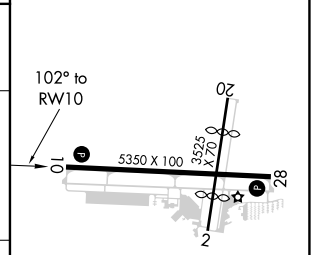
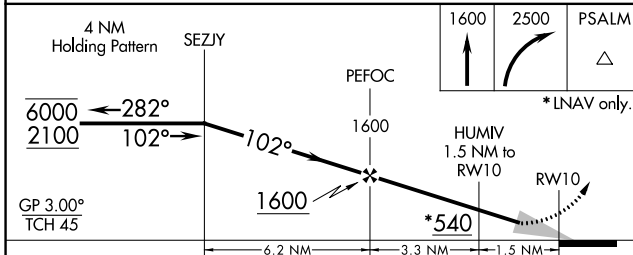
RNP APCH. Circling NA to Rwys 2 and 20. Circling Cat C NA north of Rwy 10-28. Rwy 10 helicopter visibility reduction below 3/4 SM NA. For uncompensated Baro-VNAV systems, LNAV/VNAV NA below -15°C or above 54°C.	MISSED APPROACH: Climb to 1600 then climbing right turn to 2500 direct PSALM and hold.
--	--

AWOS-3PT 118.375	NORFOLK APP CON 118.9 353.7	UNICOM 122.725 (CTAF) 0
----------------------------	---------------------------------------	-----------------------------------



Procedure NA for arrivals at DRONE on V1 southwest bound and on V266 southeast bound.

ELEV 28	TDZE 28
----------------	----------------



CATEGORY	A	B	C	D
LPV DA	228-3/4	200 (200-3/4)		NA
LNAV/VNAV DA	338-7/8	310 (400-7/8)		NA
LNAV MDA	420-1	392 (400-1)	420-1 1/8 392 (400-1 1/8)	NA
CIRCLING	500-1	472 (500-1)	780-2 1/4 752 (800-2 1/4)	NA

HIRL Rwy 10-28
REIL Rwys 10 and 28
MIRL Rwy 2-20

NE-3, 29 DEC 2022 to 26 JAN 2023

NE-3, 29 DEC 2022 to 26 JAN 2023