

WAAS CH 61303 W27A	APP CRS 272°	Rwy Idg 3395 TDZE 617 Apt Elev 620
--	------------------------	---

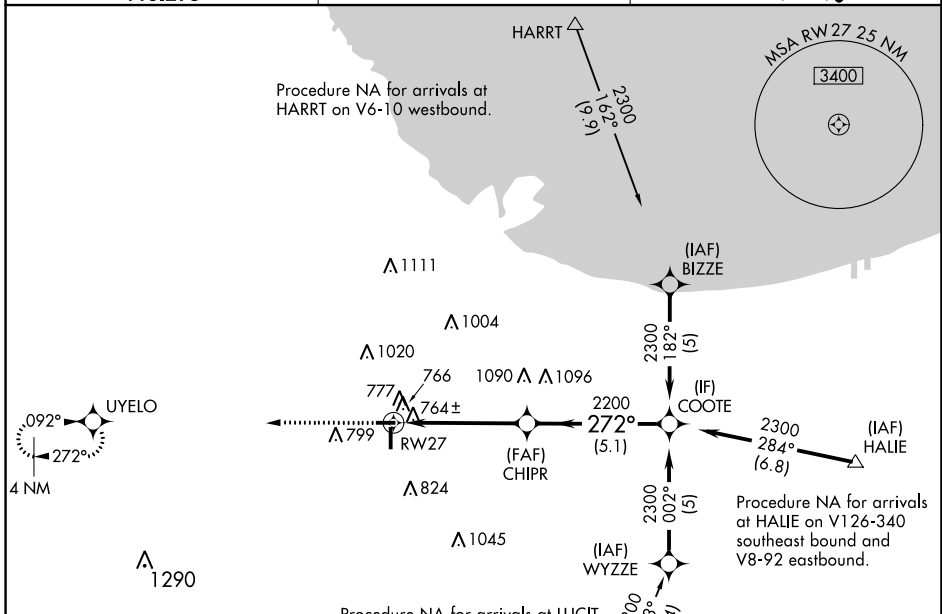
RNAV (GPS) RWY 27

LANSING MUNI (IGQ)

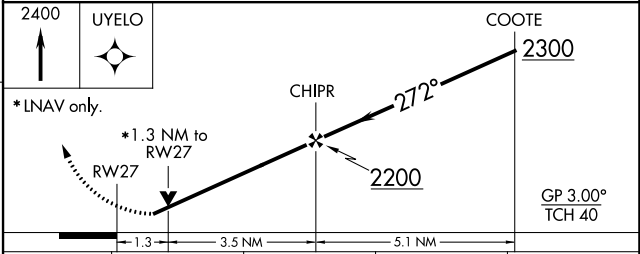
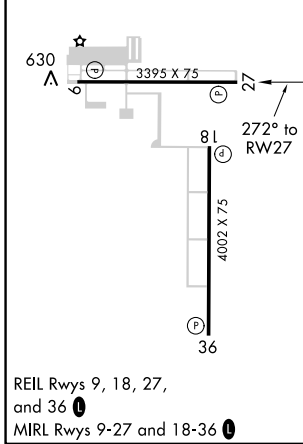
▼ **▲** Baro-VNAV NA when using Chicago Midway Intl altimeter setting. For uncompensated Baro-VNAV systems, LNAV/VNAV NA below -16°C (4°F) or above 54°C (130°F). Rwy 27 helicopter visibility reduction below ¾ SM NA. DME/DME RNP-0.3 NA. VDP NA when using Chicago Midway Intl altimeter setting. When local altimeter setting not received, use Chicago Midway Intl altimeter setting: increase LPV DA to 1058 and LNAV/VNAV DA to 1114 and all MDA 60 feet. Circling Rwy 9 NA at night.

MISSED APPROACH: Climb to 2400 direct UYELO and hold.

AWOS-3PT 119.275	CHICAGO APP CON 128.2 285.6	UNICOM 122.7 (CTAF) 0
----------------------------	---------------------------------------	---------------------------------



ELEV 620	TDZE 617
----------	----------



CATEGORY	A	B	C	D
LPV DA	1016-1½	399 (400-1½)		NA
LNAV/VNAV DA	1072-1¾	455 (500-1¾)		NA
LNAV MDA	1080-1	463 (500-1)		NA
CIRCLING	1140-1	520 (600-1)		NA

CHICAGO, ILLINOIS
Orig-A 30MAR17

41° 32'N-87° 32'W

RNAV (GPS) RWY 27

EC-3, 29 DEC 2022 to 26 JAN 2023

EC-3, 29 DEC 2022 to 26 JAN 2023