

(HURCN3.HURCN) 22139

AL-5349 (FAA)

MIAMI EXEC (TMB)  
MIAMI, FLORIDA

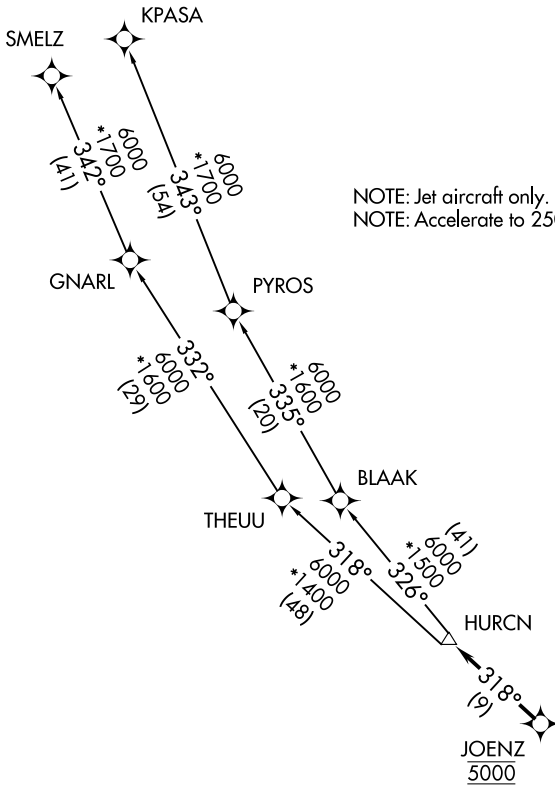
# HURCN THREE DEPARTURE (RNAV)

RNAV-1 DME/DME/IRU or GPS.

RADAR required.

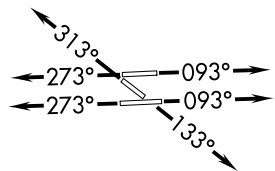
**TOP ALTITUDE:  
ASSIGNED BY ATC**

ATIS  
124.0  
CLNC DEL  
133.0  
GND CON  
121.7  
TAMiami TOWER ★  
118.9 (CTAF)  
MIAMI DEP CON  
125.5 354.1



### TAKEOFF MINIMUMS

- Rwy 9L: Standard with minimum climb of 500' per NM to 1300.
- Rwy 9R: Standard with minimum climb of 500' per NM to 1500.
- Rwy 13: Standard with minimum climb of 500' per NM to 1800.
- Rwy 27L: Standard with minimum climb of 500' per NM to 1900.
- Rwy 27R: Standard with minimum climb of 500' per NM to 1700.
- Rwy 31: Standard with minimum climb of 500' per NM to 1400.



NOTE: Chart not to scale.

(NARRATIVE ON FOLLOWING PAGE)

# HURCN THREE DEPARTURE (RNAV)

(HURCN3.HURCN) 19MAY22

MIAMI, FLORIDA  
MIAMI EXEC (TMB)

SE-3, 29 DEC 2022 to 26 JAN 2023

SE-3, 29 DEC 2022 to 26 JAN 2023