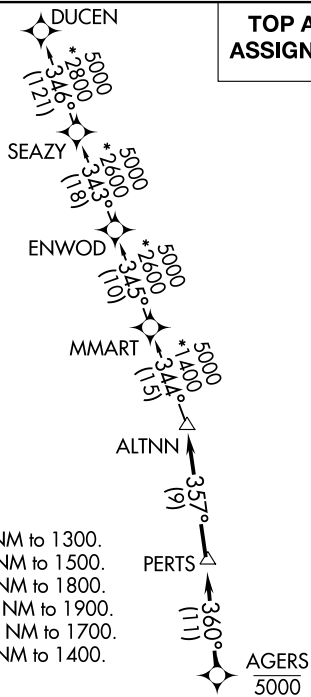


ALTNN ONE DEPARTURE (RNAV)

ATIS
124.0
CLNC DEL
133.0
GND CON
121.7
TAMIAMI TOWER *
118.9 (CTAF)
MIAMI DEP CON
125.5 354.1

RNAV 1 - DME/DME/IRU or GPS.
RADAR required.

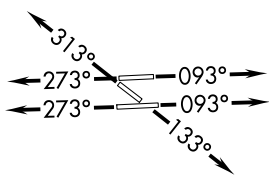
**TOP ALTITUDE:
ASSIGNED BY ATC**



NOTE: Jet aircraft only.
NOTE: Accelerate to 250K, if unable, advise ATC.

TAKEOFF MINIMUMS

- Rwy 9L: Standard with minimum climb of 500' per NM to 1300.
- Rwy 9R: Standard with minimum climb of 500' per NM to 1500.
- Rwy 13: Standard with minimum climb of 500' per NM to 1800.
- Rwy 27L: Standard with minimum climb of 500' per NM to 1900.
- Rwy 27R: Standard with minimum climb of 500' per NM to 1700.
- Rwy 31: Standard with minimum climb of 500' per NM to 1400.



NOTE: Chart not to scale.

DEPARTURE ROUTE DESCRIPTION

- TAKEOFF RUNWAYS 9L/R:** Climb on heading 093° or as assigned for RADAR vectors to cross AGERS at 5000, thence. . . .
- TAKEOFF RUNWAY 13:** Climb on heading 133° or as assigned for RADAR vectors to cross AGERS at 5000, thence. . . .
- TAKEOFF RUNWAYS 27L/R:** Climb on heading 273° or as assigned for RADAR vectors to cross AGERS at 5000, thence. . . .
- TAKEOFF RUNWAY 31:** Climb on heading 313° or as assigned for RADAR vectors to cross AGERS at 5000, thence. . . .

. . . . on track 360° to PERTS, then on track 357° to ALTNN, then on assigned transition, maintain ATC assigned altitude, expect filed altitude within 10 minutes after departure.

DUCEN TRANSITION (ALTNN1 .DUCEN)

SE-3, 29 DEC 2022 to 26 JAN 2023

SE-3, 29 DEC 2022 to 26 JAN 2023