

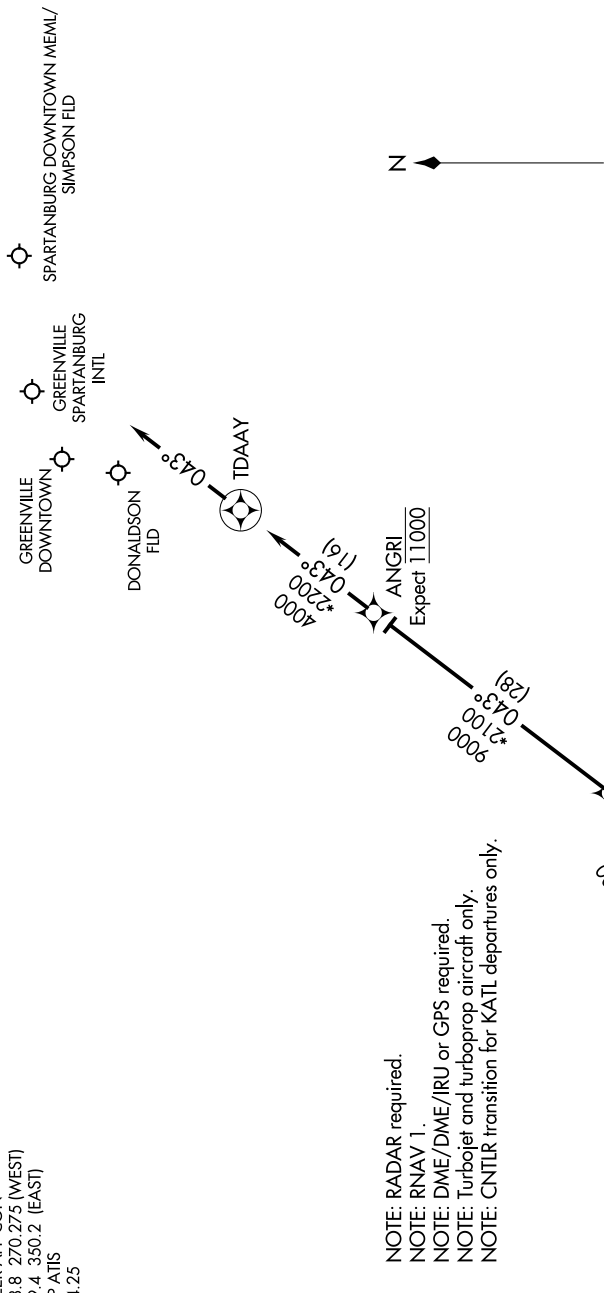
# WORXS TWO ARRIVAL(RNAV)

GREER, SOUTH CAROLINA

SE-2, 29 DEC 2022 to 26 JAN 2023

GREER APP CON  
118.8 270.275 (WEST)  
119.4 350.2 (EAST)  
GSP ATIS  
134.25

- NOTE: RADAR required.
- NOTE: RNAV 1.
- NOTE: DME/DME/IRU or GPS required.
- NOTE: Turbojet and turboprop aircraft only.
- NOTE: CNTLR transition for KATL departures only.



### ARRIVAL ROUTE DESCRIPTION

BEST TRANSITION (BESTT.WORXS2)  
CNTLR TRANSITION (CNTLR.WORXS2)

From WORXS on track 043° to ANGR1, then on track 043° to TDAAY, then on heading 043°. Expect RADAR vectors to final approach course.

NOTE: Chart not to scale.

SE-2, 29 DEC 2022 to 26 JAN 2023

# WORXS TWO ARRIVAL(RNAV)

GREER, SOUTH CAROLINA