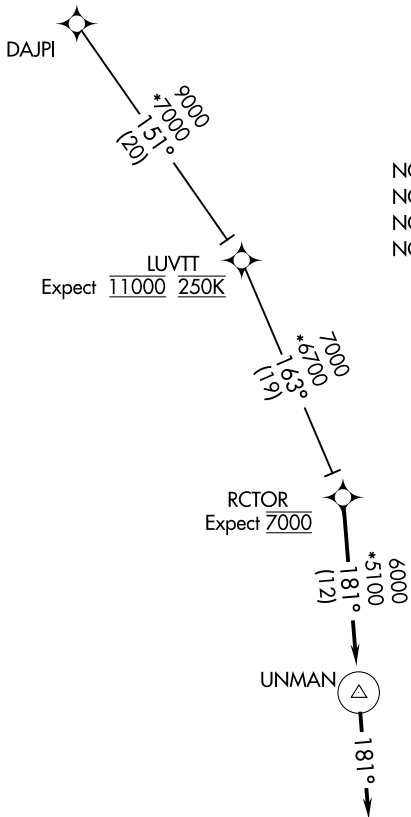


RCTOR TWO ARRIVAL (RNAV)

GREER, SOUTH CAROLINA

GREER APP CON
118.8 270.275 (WEST)
119.4 350.2 (EAST)
GSP ATIS
134.25



NOTE: RADAR required.
 NOTE: RNAV 1.
 NOTE: DME/DME/IRU or GPS required.
 NOTE: Turbojet and Turboprop aircraft only.

Expect 11000 250K

RCTOR
Expect 7000

SPARTANBURG DOWNTOWN MEML/
SIMPSON FLD

GREENVILLE
DOWNTOWN

GREENVILLE
SPARTANBURG
INTL

DONALDSON
FLD

NOTE: Chart not to scale.

ARRIVAL ROUTE DESCRIPTION

DAJPI TRANSITION (DAJPI.RCTOR2)

From RCTOR on track 181° to UNMAN, then on heading 181°. Expect RADAR vectors to final approach course.

RCTOR TWO ARRIVAL (RNAV)

GREER, SOUTH CAROLINA