

DUBLIN, VIRGINIA

AL-5084 (FAA)

22251

LOC I-PSK 110.9	APP CRS 058°	Rwy Idg TDZE Apt Elev 6201 2105 2105
---------------------------	------------------------	--

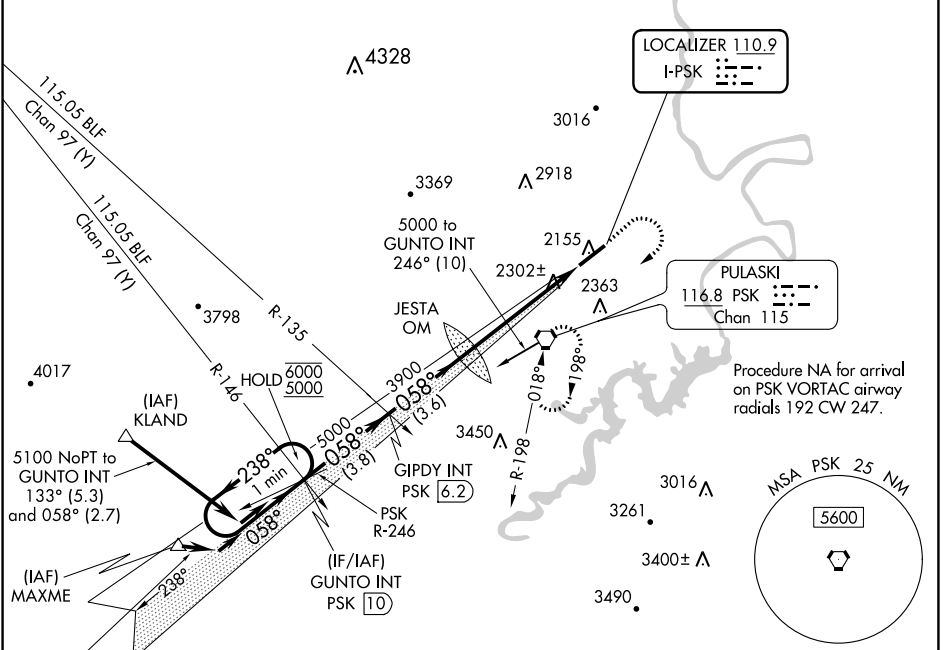
ILS or LOC Z RWY 6

NEW RIVER VALLEY (PSK)

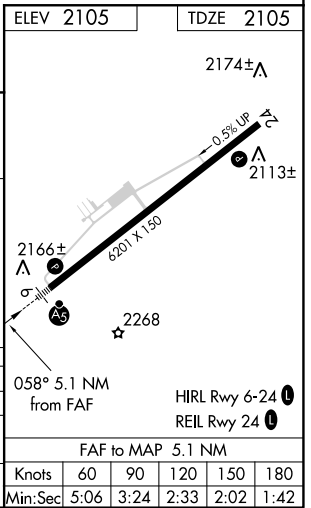
NA Inop table does not apply to S-ILS 6 all Cats and S-LOC 6 Cats A and B. For inop ALS, increase S-LOC 6 Cat C/D visibility to 1 3/8 SM. Circling NA for Cat D northwest of Rwy 6-24.

MALSR MISSED APPROACH: Climb to 3000 then climbing right turn to 5000 direct PSK VORTAC and hold, continue climb-in-hold to 5000.

AWOS-3 127.375	ROANOKE APP CON 126.0 339.8	ROANOKE CLNC DEL 121.7	UNICOM 122.7 (CTAF)
--------------------------	---------------------------------------	----------------------------------	-------------------------------



CATEGORY	A	B	C	D
S-ILS 6		2305-1	200 (200-1)	
S-LOC 6		2560-1	455 (500-1)	



CIRCLING	ELEV 2105 TDZE 2105				Knots				
	2620-1	2680-1	2780-2	2780-2 1/4	60	90	120	150	180
	515 (600-1)	575 (600-1)	675 (700-2)	675 (700-2 1/4)	5:06	3:24	2:33	2:02	1:42

DUBLIN, VIRGINIA
Amdt 5B 25FEB21

37°08'N-80°41'W

NEW RIVER VALLEY (PSK)

ILS or LOC Z RWY 6

NE-3, 29 DEC 2022 to 26 JAN 2023

NE-3, 29 DEC 2022 to 26 JAN 2023