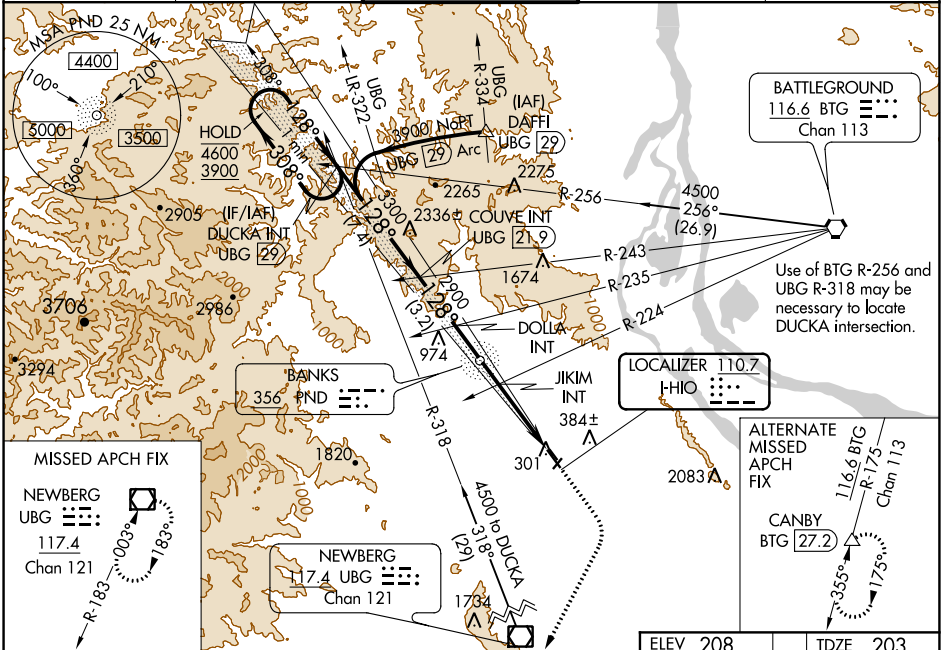


LOC I-HIO <b>110.7</b>	APP CRS <b>128°</b>	Rwy Idg TDZE Apt Elev	<b>6600</b> <b>203</b> <b>208</b>
---------------------------	------------------------	-----------------------------	---

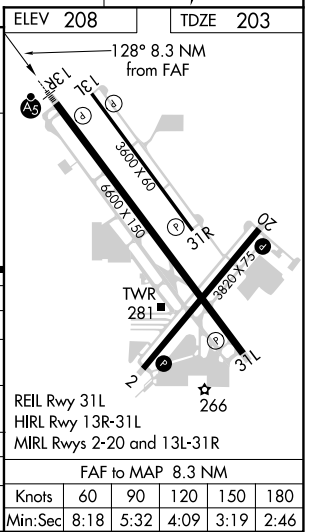
# ILS or LOC RWY 13R

PORTLAND-HILLSBORO (HIO)

Circling to Rwy 13L, 31R NA at night. Inop table does not apply to S-LOC Rwy 13R all Cats. For inop ALS, increase JKIM fix minimums Cat C/D visibility to 1 3/8 SM.			MISSED APPROACH: Climb to 1000 then climbing right turn to 3000 direct UBG VOR/DME and hold. Continue climb-in-hold to 3000.	
	ATIS <b>127.65</b>	PORTLAND APP CON <b>126.0 269.175</b>	HILLSBORO TOWER * <b>119.3 (CTAF) 239.3</b>	GND CON <b>121.7</b>



DUCKA INT UBG [29]		COUVE INT UBG [21.9]		DOLLA INT		JIKIM INT	
One Minute Holding Pattern						*LOC only.	
4600 ← 308° 3900 → 128°		2900		2900		1660	
GS 3.00° TCH 48							
7.4 NM		3.2 NM		3.9 NM		4.4 NM	
CATEGORY	A	B	C	D			
S-ILS 13R	403/24			200 (200-1/2)			
S-LOC 13R	1660/60 1457 (1500-1 1/4)		1660-1 1/2 1457 (1500-1 1/2)		1660-3 1457 (1500-3)		
CIRCLING	1660-1 1/4 1452 (1500-1 1/4)		1660-1 1/2 1452 (1500-1 1/2)		1660-3 1452 (1500-3)		
JKIM FIX MINIMUMS (DUAL VOR RECEIVERS REQUIRED)							
S-LOC 13R	680/24 477 (500-1/2)		680/50 477 (500-1)				
CIRCLING	680-1 472 (500-1)		720-1 512 (600-1)		720-1 1/2 512 (600-1 1/2)		980-2 1/2 772 (800-2 1/2)



NW-1, 29 DEC 2022 to 26 JAN 2023

NW-1, 29 DEC 2022 to 26 JAN 2023