

MARYSVILLE, CALIFORNIA

# RNAV (GPS) RWY 33

APCH CRS	Rwy Idg	12,001
325°	THRE	105
	Arpt Elev	113

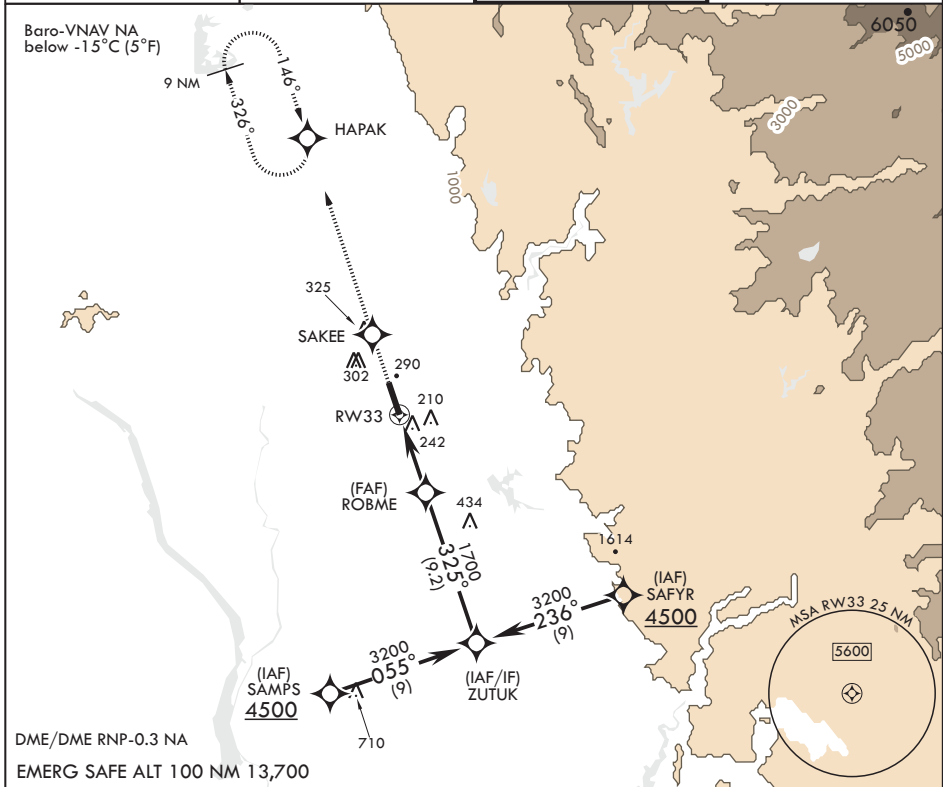
AL-771 (USAF)

BEALE AFB (KBAB)

\* When ALS inop, increase vis to 1 7/8 miles.  
 \*\* When ALS inop, increase CAT AB RVR to 55 and vis to 1 mile, CAT CD vis to 1 1/4 miles.  
 \*\*\* Circling not authorized E of Rwy 15-33.

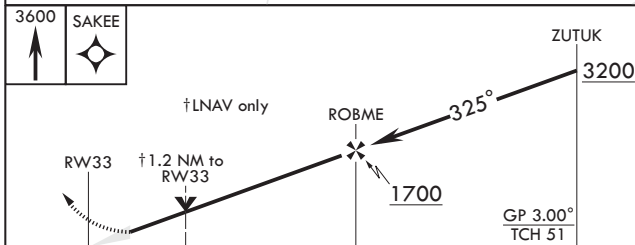
**ALSF-1**  
**MISSED APPROACH:** Climb direct SAKEE, then track 326° to HAPAK and hold, maintain 3600.

ATIS★ 124.55 273.5	NORCAL APP CON 125.4 259.1	TOWER★ 119.4 284.75	GND CON 121.6 257.75
-----------------------	-------------------------------	------------------------	-------------------------

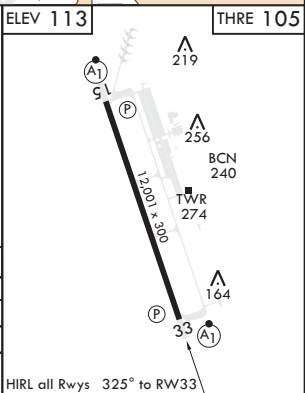


DME/DME RNP-0.3 NA

EMERG SAFE ALT 100 NM 13,700



CATEGORY	A	B	C	D
LNNAV/VNAV DA*	640-1 $\frac{3}{8}$	535	(600-1 $\frac{3}{8}$ )	
LNNAV MDA**	540/24	435 (500- $\frac{1}{2}$ )	540/40	435 (500- $\frac{3}{4}$ )
<b>C</b> CIRCLING***	600-1 487 (500-1)	640-1 527 (600-1)	660-1 $\frac{1}{2}$ 547 (600-1 $\frac{1}{2}$ )	680-2 567 (600-2)



MARYSVILLE, CALIFORNIA

39°08'N - 121°26'W

BEALE AFB (KBAB)

Amdt 1 24MAY18

# RNAV (GPS) RWY 33

SW-2, 29 DEC 2022 to 26 JAN 2023

SW-2, 29 DEC 2022 to 26 JAN 2023