

MARYSVILLE, CALIFORNIA

# HI-ILS or LOC Z RWY 15

LOC I-BAB <b>109.5</b>	APCH CRS <b>145°</b>	Rwy Idg 12,001	TDZE 113	Arpt Elev 113
---------------------------	-------------------------	-------------------	-------------	------------------

AL-771 (USAF)

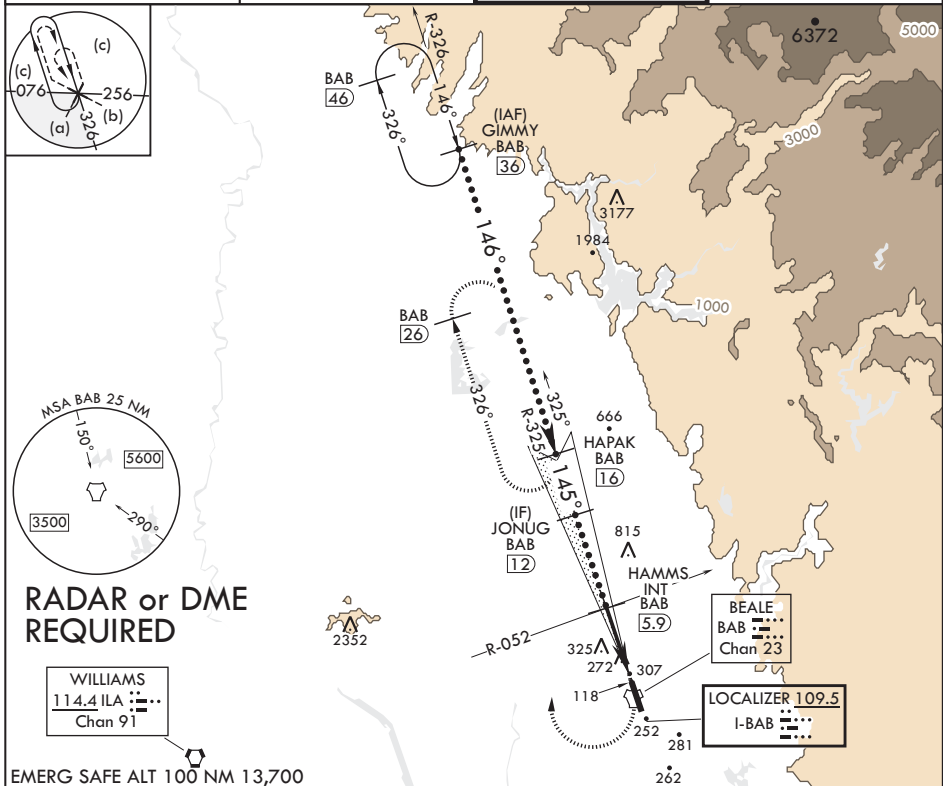
BEALE AFB (KBAB)

\* When ALS inop, increase CAT CDE RVR to 40 and vis to 3/4 mile.  
 \*\* When ALS inop, increase CAT CDE vis to 1 3/8 miles.  
 \*\*\* Circling not authorized E of Rwy 15-33.

**ALSF-1**  
**A1**

**MISSED APPROACH:** Climb to 4400 direct to BAB TACAN. Turn right to intercept BAB R-326 to HAPAK and hold, continue climb in hold to 4400.

ATIS* <b>124.55 273.5</b>	NORCAL APP CON <b>125.4 259.1</b>	TOWER* <b>119.4 284.75</b>	GND CON <b>121.6 257.75</b>
------------------------------	--------------------------------------	-------------------------------	--------------------------------



GIMMY (36) 12,000 GS 2.75° TCH 47	HAPAK (16) 3600 146°	JONUG (12) 2600 145°	HAMMS INT (5.9) 1600 ILA R-052	HEGOP (1.5) 2.6 4.4 NM	BAB TACAN 4400 BAB R-326	<b>ELEV 113</b> <b>TDZE 113</b> 145° 4.9 NM from FAF 12,000 x 3600 BCN 240 TWR 274 33
VGSIs and glideslope not coincidental.						
<b>LOC I-BAB 109.5</b> <b>LOCALIZER 109.5</b> <b>Chan 23</b>						

CATEGORY	C	D	E
S-ILS 15*	313/24	200	(200-1/2)
S-LOC 15**	620/55	507	(600-1)
<b>C</b> CIRCLING***	620-1 1/2 507 (600-1 1/2)	680-2 567 (600-2)	840-2 1/2 727 (800-2 1/2)

MARYSVILLE, CALIFORNIA

39°08'N - 121°26'W

BEALE AFB (KBAB)

Amdt 5 20JUL17

# HI-ILS or LOC Z RWY 15

SW-2, 29 DEC 2022 to 26 JAN 2023

SW-2, 29 DEC 2022 to 26 JAN 2023