

LOC I-GYY 108.75 Chan 24 (Y)	APP CRS 306°	Rwy Idg TDZE Apt Elev	7959 591 597
---	------------------------	-----------------------------	---

COPTER ILS or LOC RWY 30

GARY/CHICAGO INTL (GYY)

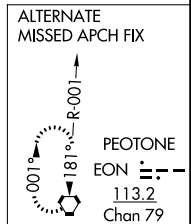
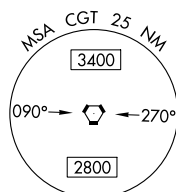
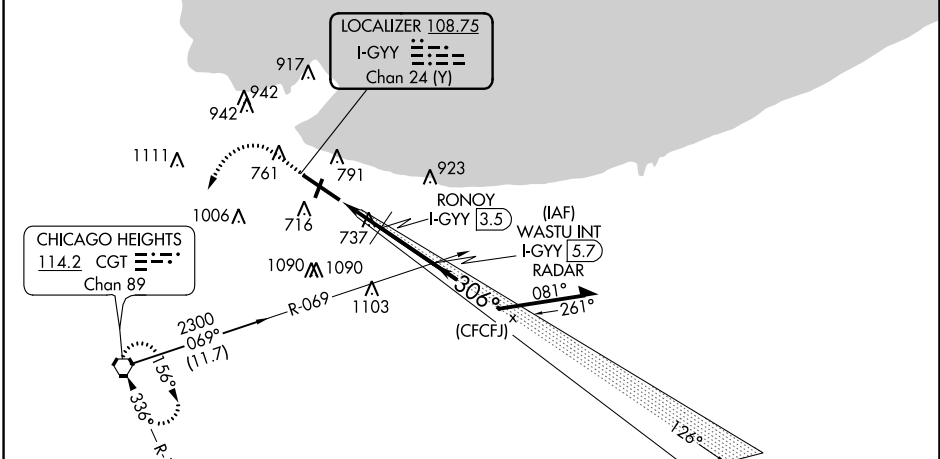
⚠ When local altimeter setting not received, use Chicago Midway Intl altimeter setting and increase all DA 46 feet and all MDA 60 feet. VDP NA with Chicago Midway Intl altimeter setting.



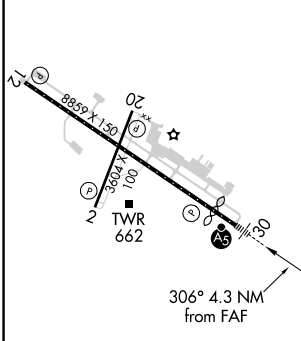
MISSED APPROACH: Climb to 1500 then climbing left turn to 2300 direct CGT VORTAC and hold.

ATIS 134.575	CHICAGO APP CON 133.1 285.6	GARY TOWER ★ 125.6 (CTAF) 0	GND CON 121.9
------------------------	---------------------------------------	---------------------------------------	-------------------------

DME or RADAR REQUIRED



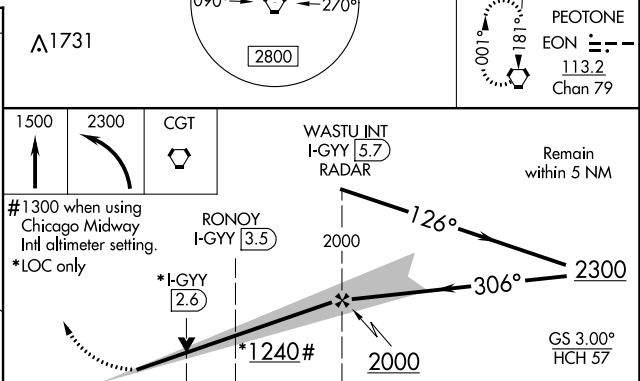
ELEV 597	D	TDZE 591
----------	----------	----------



REIL Rwy 2, 12 and 20 **0**
 HIRL Rwy 12-30 **0**
 MIRL Rwy 2-20 **0**

FAF to MAP 4.3 NM

Knots	45	60	75	90	105
Min:Sec	5:44	4:18	3:26	2:52	2:27



CATEGORY	COPTER	
S-ILS 30	791 - ¼	200 (200-¼)
S-LOC 30	1240 - ¼	649 (700-¼)
RONOY FIX MINIMUMS		
S-LOC 30	1000 - ¼	409 (500-¼)

EC-2, 29 DEC 2022 to 26 JAN 2023

EC-2, 29 DEC 2022 to 26 JAN 2023