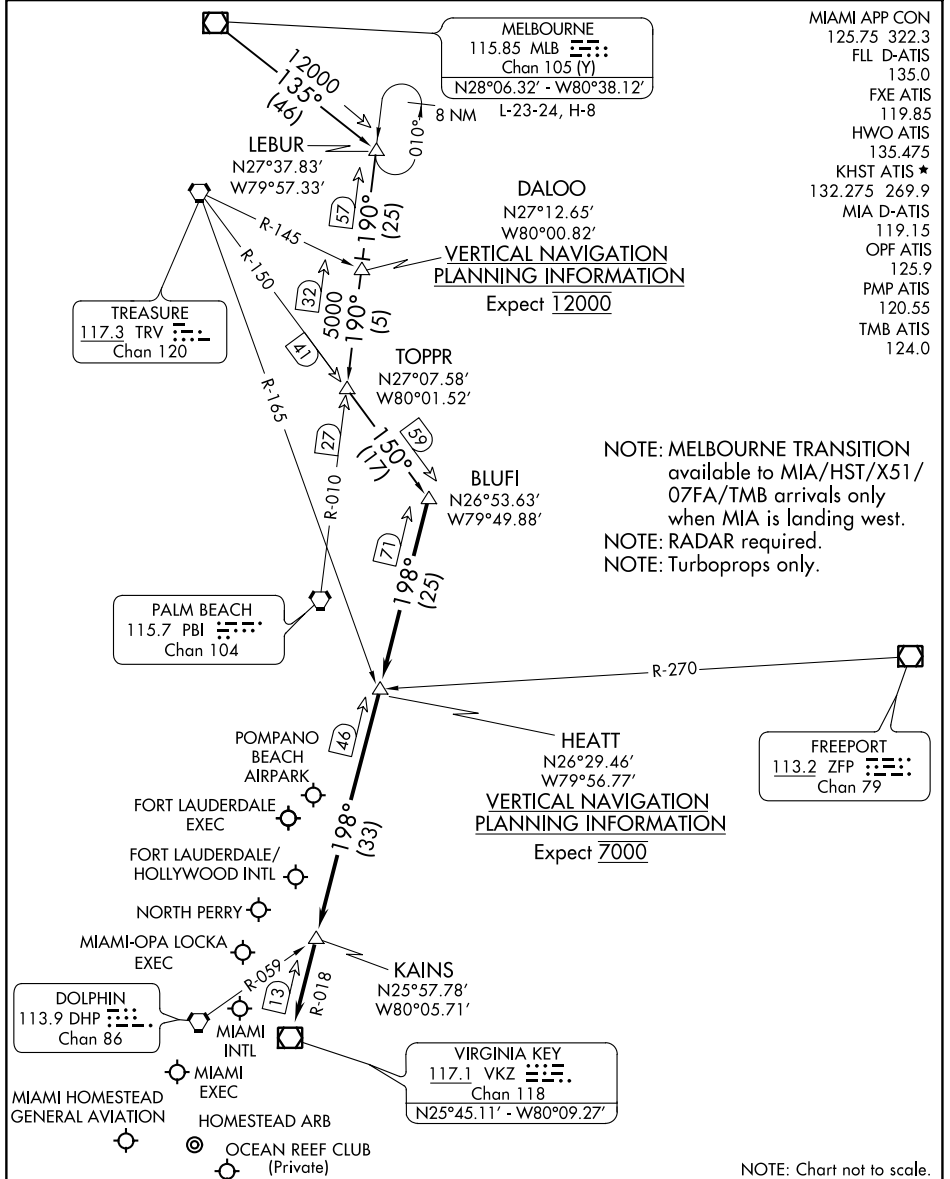


# BLUF1 FOUR ARRIVAL

FORT LAUDERDALE, FLORIDA



- MIAMI APP CON 125.75 322.3
- FLL D-ATIS 135.0
- FXE ATIS 119.85
- HWO ATIS 135.475
- KHST ATIS ★ 132.275 269.9
- MIA D-ATIS 119.15
- OPF ATIS 125.9
- PMP ATIS 120.55
- TMB ATIS 124.0

NOTE: MELBOURNE TRANSITION available to MIA/HST/X51/07FA/TMB arrivals only when MIA is landing west.  
 NOTE: RADAR required.  
 NOTE: Turboprops only.

VERTICAL NAVIGATION PLANNING INFORMATION  
 Expect 7000

MELBOURNE  
 115.85 MLB  
 Chan 105 (Y)  
 N28°06.32' - W80°38.12'  
 L-23-24, H-8

DALOO  
 N27°12.65'  
 W80°00.82'  
 VERTICAL NAVIGATION PLANNING INFORMATION  
 Expect 12000

TOPPR  
 N27°07.58'  
 W80°01.52'

BLUFI  
 N26°53.63'  
 W79°49.88'

HEATT  
 N26°29.46'  
 W79°56.77'  
 VERTICAL NAVIGATION PLANNING INFORMATION  
 Expect 7000

KAINS  
 N25°57.78'  
 W80°05.71'

VIRGINIA KEY  
 117.1 VKZ  
 Chan 118  
 N25°45.11' - W80°09.27'

NOTE: Chart not to scale.

MELBOURNE TRANSITION (MLB.BLUF14): From over MLB VOR/DME on MLB R-135 to LEBUR INT/MLB 46 DME, then on PBI R-010 to TOPPR INT/PBI 30 DME, then on TRV R-150 to BLUFI INT. Thence . . .  
 . . . from over BLUFI INT/VKZ 71 DME on VKZ R-018 to HEATT INT/VKZ 46 DME, then on VKZ R-018 to KAINS INT, then on VKZ R-018 to VKZ VOR/DME. Expect RADAR vectors to final approach course after KAINS INT.

# BLUF1 FOUR ARRIVAL

FORT LAUDERDALE, FLORIDA

SE-3, 29 DEC 2022 to 26 JAN 2023

SE-3, 29 DEC 2022 to 26 JAN 2023