

# PALMZ TWO ARRIVAL

MIAMI, FLORIDA

SE-3, 29 DEC 2022 to 26 JAN 2023

MIAMI APP CON  
120.5 350.225  
KHST ATIS\*  
132.275 269.9  
MIA D-ATIS  
119.15  
OPF ATIS  
125.9  
TMB ATIS  
124.0

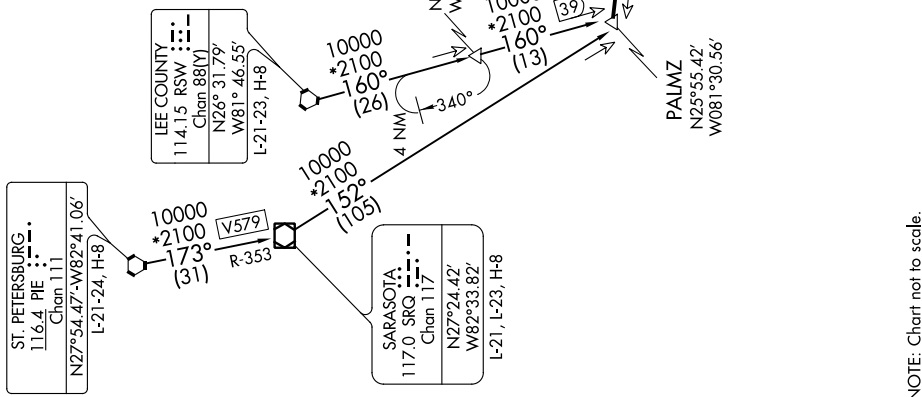


## ARRIVAL ROUTE DESCRIPTION

LEE COUNTY TRANSITION (RSW.PALMZ2): From over RSW VORTAC on RSW R-160 to PALMZ. Thence . . . .  
SARASOTA TRANSITION (SRQ.PALMZ2): From over SRQ VOR/DME on SRQ R-152 to PALMZ. Thence . . . .  
ST PETERSBURG TRANSITION (PIE.PALMZ2): From over PIE VORTAC on PIE R-173 and SRQ R-353 to SRQ VOR/DME then on SRQ R-152 to PALMZ. Thence . . . .

. . . . landing all airports: From PALMZ on DOLPHIN VORTAC (DHP) R-281 to PRIVY, thence as depicted to DHP VORTAC.  
Expect RADAR vectors to final approach course.

RADAR required. DME required.



# PALMZ TWO ARRIVAL

(PALMZ.PALMZ2) 02DEC21

MIAMI, FLORIDA

NOTE: Chart not to scale.

SE-3, 29 DEC 2022 to 26 JAN 2023