

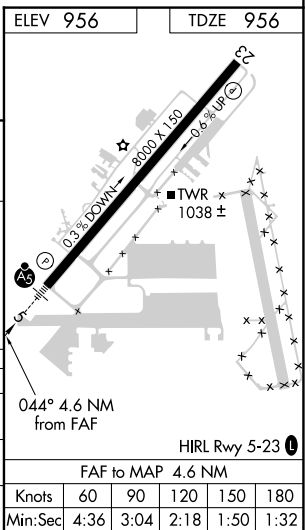
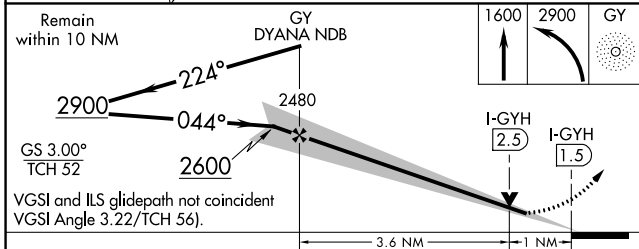
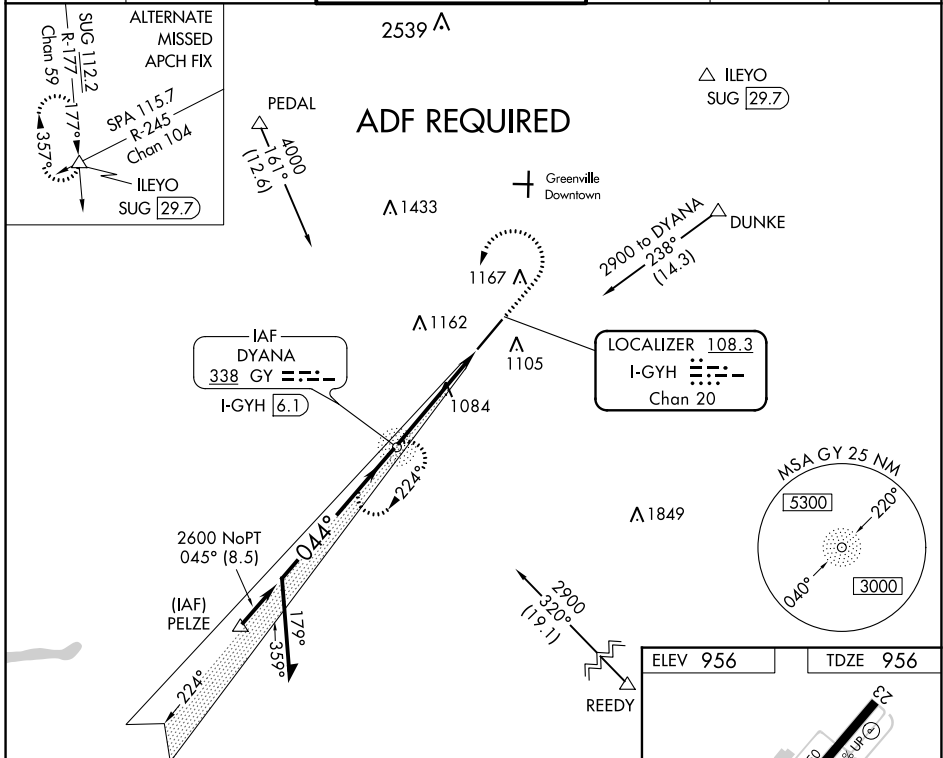
LOC/DME I-GYH <b>108.3</b> Chan 20	APP CRS <b>044°</b>	Rwy Idg <b>8000</b> TDZE <b>956</b> Apt Elev <b>956</b>
--	------------------------	---

# ILS or LOC RWY 5

DONALDSON FLD (GYH)

<p><b>⚠</b> When local altimeter setting not received, use Greer altimeter setting and increase all DAs/MDAs 40 feet, increase S-LOC Cat C visibility 1/4 mile.</p>	<p><b>MALS</b></p>	<p><b>MISSED APPROACH:</b> Climb to 1600 then climbing left turn to 2900 direct DYANA NDB and hold, continue climb-in-hold to 2900.</p>
---	--------------------	---

AWOS-3 <b>127.325</b>	GREER APP CON ★ <b>118.8 270.275</b>	<b>DONALDSON TOWER ★</b> <b>133.325 (CTAF) 0 269.25</b>	GND CON <b>121.4</b>	CLNC DEL <b>121.4</b>	UNICOM <b>122.7</b>
--------------------------	---	--	-------------------------	--------------------------	------------------------



CATEGORY	A	B	C	D
S-ILS 5		1156-1/2	200 (200-1/2)	
S-LOC 5	1340-1/2	384 (400-1/2)		1340-3/4 384 (400-3/4)
CIRCLING	1420-1 464 (500-1)	1480-1 524 (600-1)	1480-1 1/2 524 (600-1 1/2)	1540-2 584 (600-2)

SE-2, 29 DEC 2022 to 26 JAN 2023

SE-2, 29 DEC 2022 to 26 JAN 2023