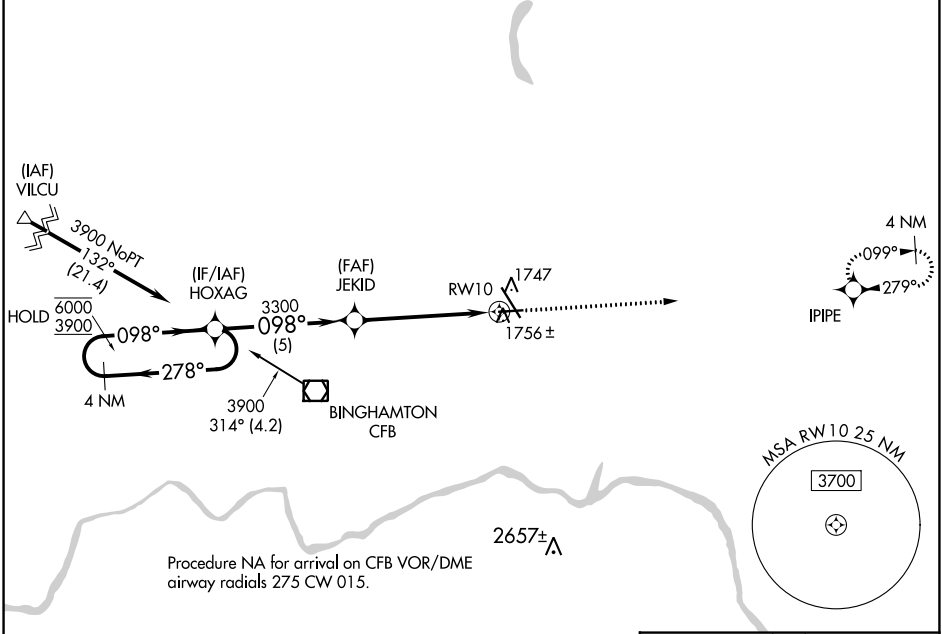


WAAS CH 93820 W10A	APP CRS 098°	Rwy Idg TDZE Apt Elev	5001 1591 1636
--	------------------------	-----------------------------	---

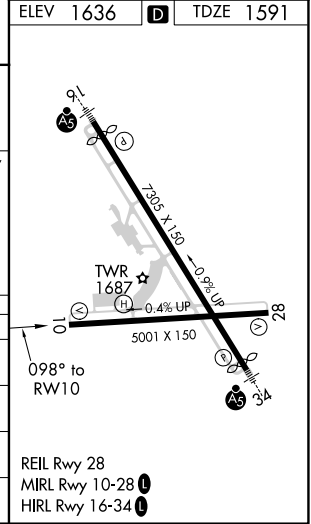
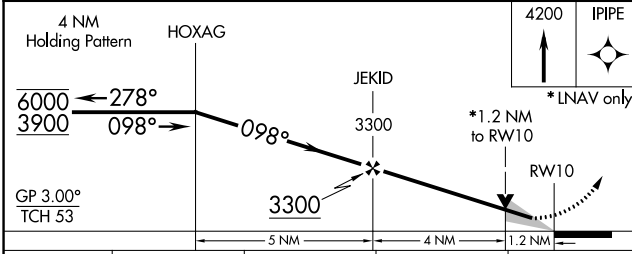
RNAV (GPS) RWY 10

GREATER BINGHAMTON/EDWIN A LINK FLD (BGM)

RNP APCH.		MISSED APPROACH: Climb to 4200 direct IPIPE and hold.			
<p>▽ For uncompensated Baro-VNAV systems, ▲ LNAV/VNAV NA below -21°C or above 54°C.</p>					
ATIS 128.15	BINGHAMTON APP CON * 118.6 257.625	BINGHAMTON TOWER * 119.3 (CTAF) 0 239.25	GND CON 121.9	CLNC DEL 125.05	UNICOM 122.95



ELEV 1636	D	TDZE 1591
-----------	----------	-----------



CATEGORY	A	B	C	D
LPV DA		1841-3/4	250 (300-3/4)	
LNAV/VNAV DA		1937-1	346 (400-1)	
LNAV MDA	2020-1	429 (400-1)	2020-1 1/4	429 (400-1 1/4)
C CIRCLING	2120-1	484 (500-1)	2120-1 1/2	2200-2 564 (600-2)

NE-2, 29 DEC 2022 to 26 JAN 2023

NE-2, 29 DEC 2022 to 26 JAN 2023