

WAAS CH 86426 W21A	APP CRS 214°	Rwy Idg TDZE 1348 Apt Elev 1348	5002
--	------------------------	---	-------------

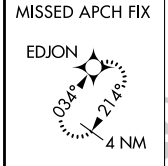
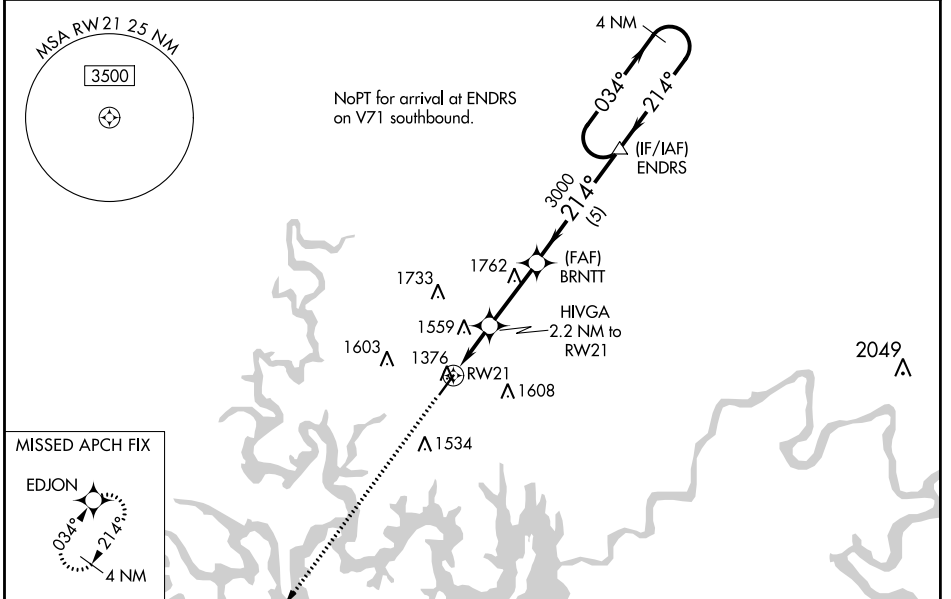
RNAV (GPS) RWY 21

BRANSON WEST MUNI - EMERSON FIELD (FWB)

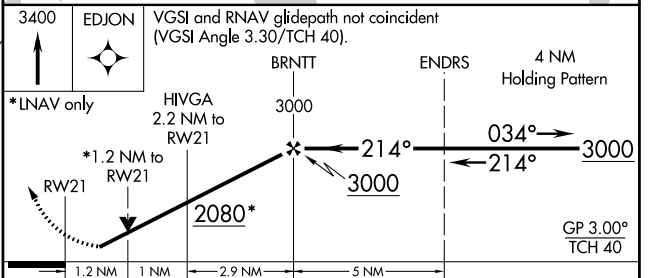
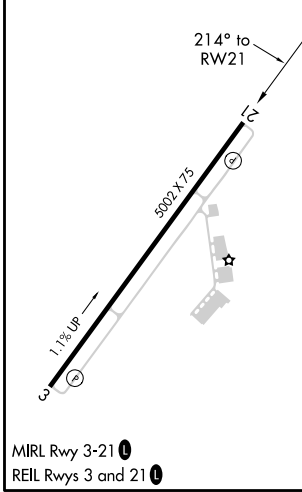
⚠ DME/DME RNP-0.3 NA. Helicopter visibility reduction below 3/4 SM NA. When local altimeter setting not received, use Branson altimeter setting; increase all DA 39 feet and all MDA 40 feet; increase LPV Cat A/B visibility to 1 mile and LNAV/VNAV Cat A/B visibility to 1 1/4. For uncompensated Baro-VNAV systems, LNAV/VNAV NA below -17°C (2°F) or above 54°C (130°F). VDP and Baro-VNAV NA when using Branson altimeter setting.

⚠ NA MISSED APPROACH: Climb to 3400 direct EDJON and hold.

AWOS-3 119.725	SPRINGFIELD APP CON 126.35	UNICOM 123.0 (CTAF) 0
--------------------------	--------------------------------------	---------------------------------



ELEV 1348	TDZE 1348
------------------	------------------



CATEGORY	A	B	C	D
LPV DA	1598-1	250 (300-1)		NA
LNAV/VNAV DA	1832-1 5/8	485 (500-1 5/8)		NA
LNAV MDA	1800-1	452 (500-1)		NA
CIRCLING	1900-1	552 (600-1)		NA

NC-3, 03 NOV 2022 to 01 DEC 2022

NC-3, 03 NOV 2022 to 01 DEC 2022