

APP CRS 224°	Rwy Idg TDZE Apt Elev	NA NA 1154
------------------------	-----------------------------	---------------------------------------

RNAV (GPS)-A

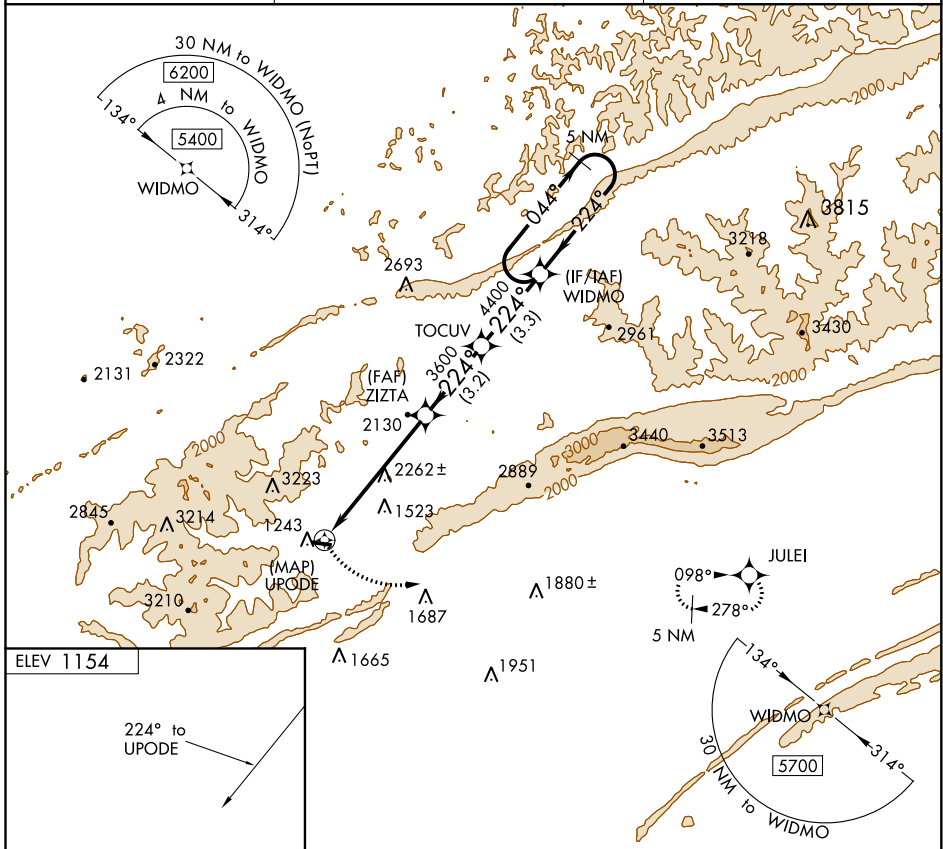
MIDDLESBORO/BELL COUNTY (1A6)

⚠ DME/DME RNP-0.3 NA. When local altimeter setting not received, use London altimeter setting: increase all MDA 100 feet. Procedure NA at night. Helicopter visibility reduction below 1 SM NA.

⚠ MISSED APPROACH: Climbing left turn to 5200 direct JULEI and hold.

⚠ -14°C

AWOS-3 119.425	INDIANAPOLIS CENTER 124.625 371.925	UNICOM 122.8 (CTAF)
--------------------------	---	-------------------------------



RNAV (GPS)-A

SE-1, 03 NOV 2022 to 01 DEC 2022

SE-1, 03 NOV 2022 to 01 DEC 2022